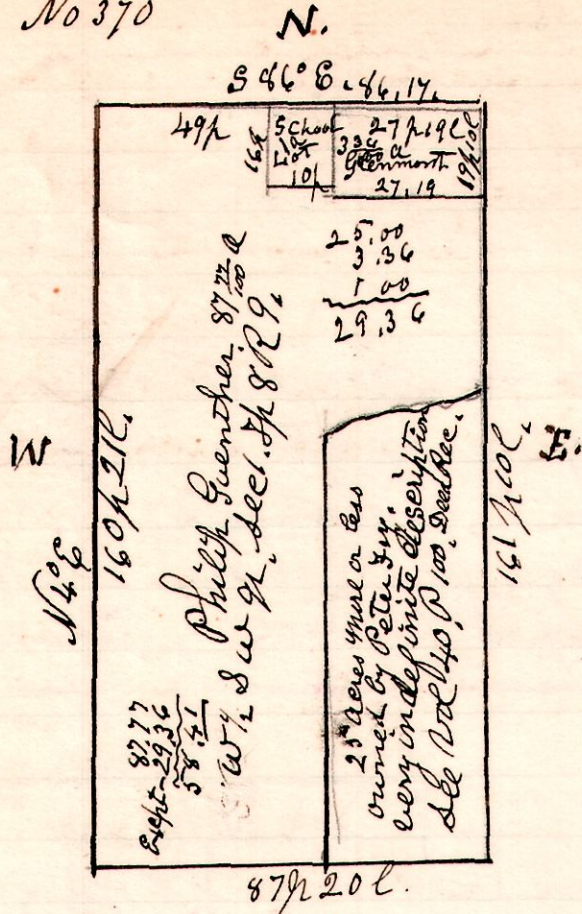


9 8 1 <sup>4 1/2</sup> <sub>2 1/2</sub>

No 370



A Survey made for Philip Guenther being the west half of the south west quarter of Section 1, in Township 8, of Range 9, containing 87.27 acres, excepting parts sold off, being 29.36 acres leaving 58 <sup>4</sup>/<sub>100</sub> acres.

March 18<sup>th</sup> 1902,  
Chain Carriers  
Cal Dewitt

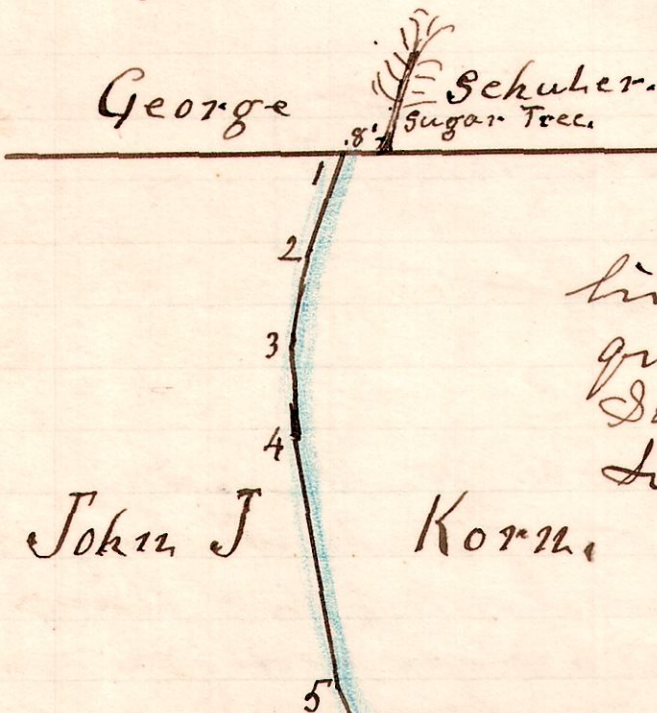
H. H. Robinson  
County Surveyor.

7 9 3<sup>2</sup> <sup>1/2</sup> <sub>19</sub>

No 371

The following is a plat and survey of a Township Road petitioned for by George Schuler, to run across lot 19-3<sup>rd</sup> q<sup>r</sup>. of R<sup>9</sup> T<sup>8</sup>, to the Danville Road. Said view and survey was ordered by the Probate Court on appeal from the Trustees of Hardy Township.

On March 20<sup>th</sup> 1902, together with A. B. Albertson, Ross Findley and G. J. Crawford, Viewers, I proceeded to survey said road as shown by plat and field notes.



Commencing at a post on the north line of lot No 19, in the third quarter, in Township 8, of Range 9, School Land, 8 feet west of a large Sugar tree, thence as indicated in plat, to end in the Mullerburg and Danville Road at a Post

Field Notes.

| Sta. | Bearing     | Distance |
|------|-------------|----------|
| 1    | S 20° W     | 5 1/2    |
| 2    | S 12° W     | 5 "      |
| 3    | S 17 1/2° W | 5 1/4    |
| 4    | S 5° E      | 12 "     |
| 5    | S 23° E     | 43 "     |

Total 70 perches.

March 20<sup>th</sup> 1902.

H. H. Robinson  
County Surveyor.

Danville Road.