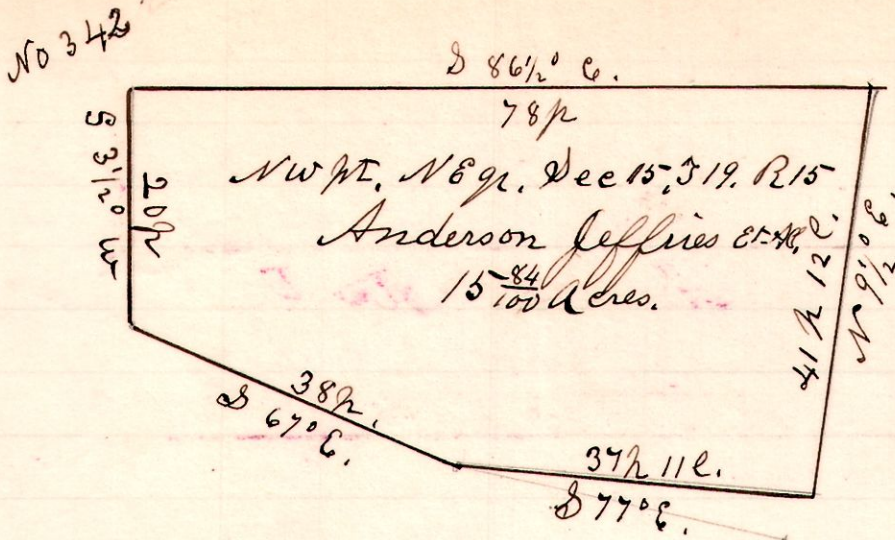


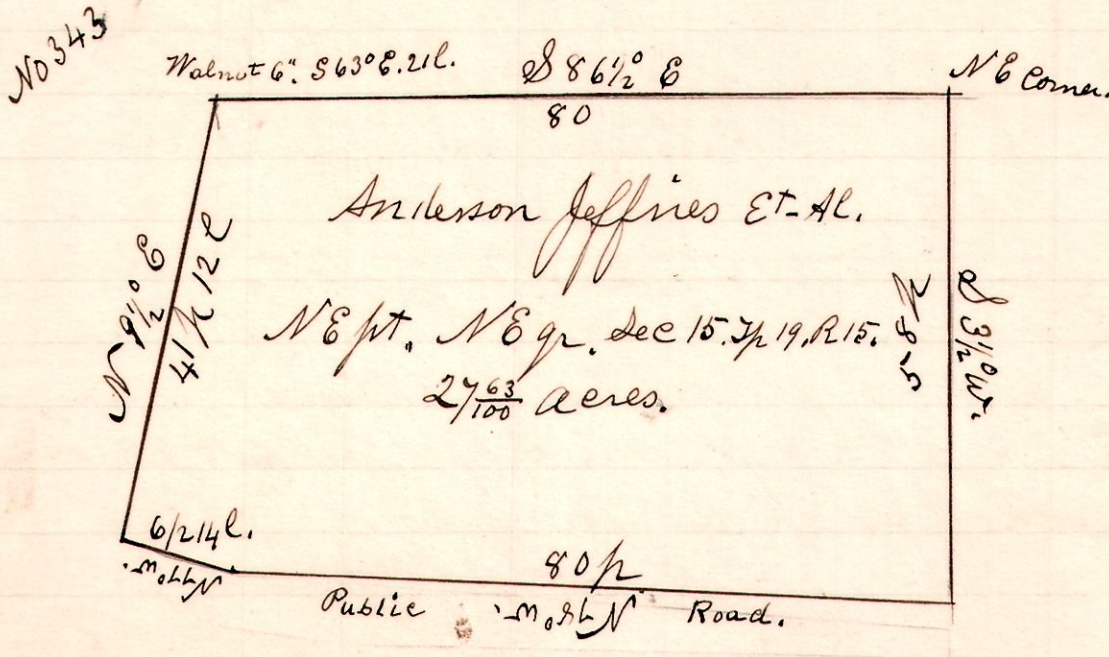
15 19 15 NE



A. Survey made for Anderson Jeffries, being the north west part of the north east quarter of Section 15, in Township 19, of Range 15. October 30th 1901. H. H. Robinson County Surveyor

Chain Carriers.
Anderson Jeffries.
Thos Jeffries

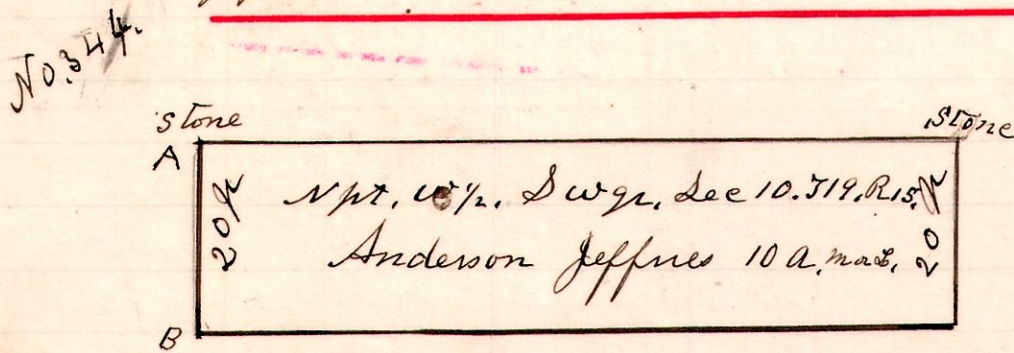
15 19 15 NE



A Survey made for Anderson Jeffries and Brothers, being the north east part of the north east quarter of Section 15, in Township 19, of Range 15. October 30th 1901.

Chain Carriers.
A. & J. Jeffries.

15 19 10



A. N.O. 15" S 86 1/2° E. 11 l.
B. B.O. 8" S 88° E. 28 c.

A Survey made for Anderson Jeffries being 10 acres, more or less off the north end of the west half of the south west quarter of Section 10, in Township 10, of Range 15.

October 30th 1901.

H. H. Robinson
County Surveyor

Chain carriers.
A & J Jeffries.