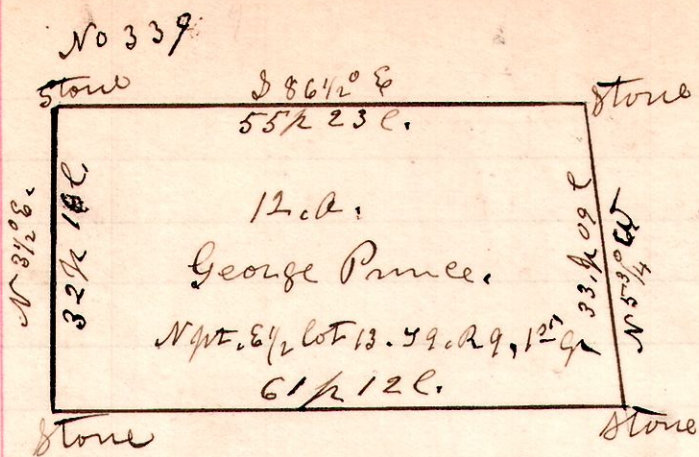


99 lot 13 Npt



A survey made for George Preece being the north part, of military lot No 13, in the 12th quarter, in Township 9, of Range 9.

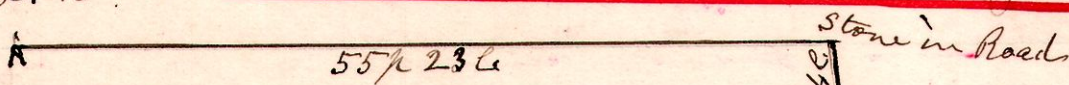
H. H. Robinson
County Surveyor

October 28th - 1901.

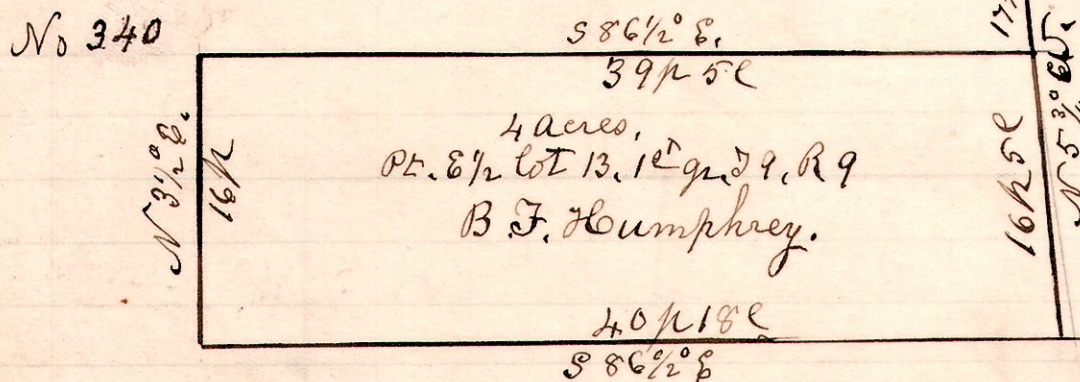
Chain Carriers

Bert Fisher - Logan Kline.

nw cor. 1/2 lot 13.



99 lot 13



A survey made for B. F. Humphrey being part of the east half of military lot No 13, in the 12th quarter, in Township 9, of Range 9.

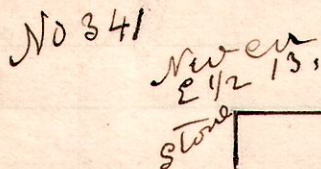
Oct 28th - 1901.

H. H. Robinson
County Surveyor

Chain Carriers.

Bert Fisher, Logan Kline.

99 lot 13



George Preece
8 acres
Pt. NW 1/4, 12th qtr, T 9, R 9

N 3 1/2° E,
32 1/2 16 c.

N 3 1/2° E,
16 c.

Stone
N 59 1/2° W,
17 1/2 4 c.

A survey made for George Preece + John Fisher being the north west part, of military lot No 13, 12th quarter, in Township 9, of Range 9.

Oct 28th - 1901.

H. H. Robinson
County Surveyor

Chain Carriers,
Bert Fisher,
Logan Kline.