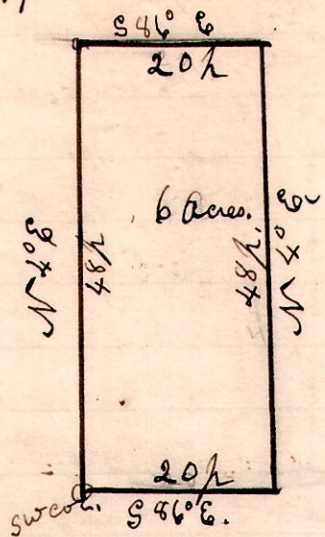


7 9 19 NW

No 319



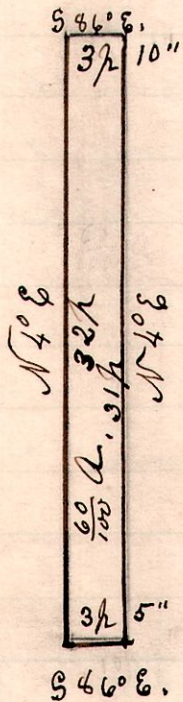
A Survey made for Sarah D Phillips, being 6 acres in the south west corner of the north west quarter of section 19 in Township 9. of Range 7, being 20 perches in width east and west, and 48 perches north and south.

August 21st 1901
Chain carriers
Guy R Palmer.
Harris Palmer.

H. H. Robinson
County Surveyor

7 9 19 SW

No 320



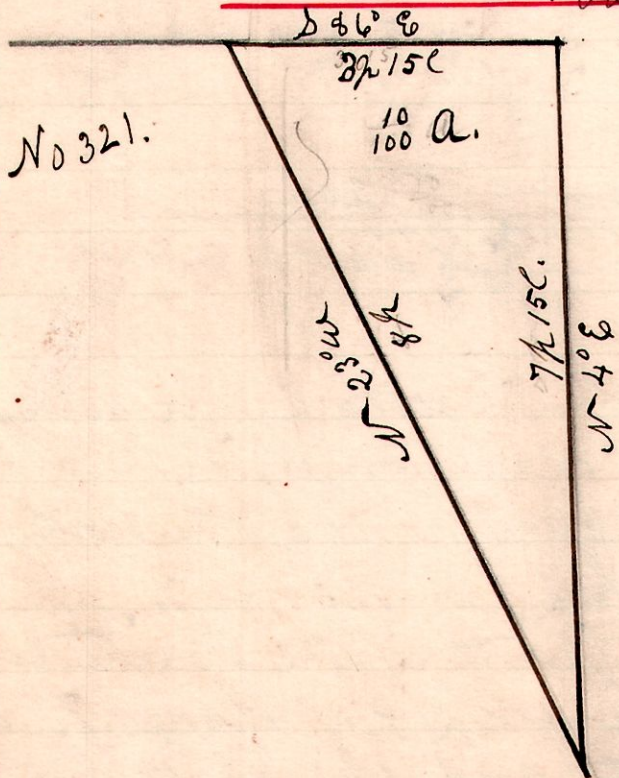
A Survey made for Sarah D Phillips, being the north west part of the south west quarter of section 19. in Township 9 of Range 7. Commencing at the north west corner of said quarter; thence east 3 perches + 10 inches to a post; thence south 31 perches to a post; thence south westerly 3 perches and 5 inches; thence north 32 perches to the place of beginning containing $\frac{60}{100}$ of an acre.

August 21st 1901.
Chain carriers
Guy Palmer.
Harris Palmer.

H. H. Robinson
County Surveyor

7 9 18

No 321.

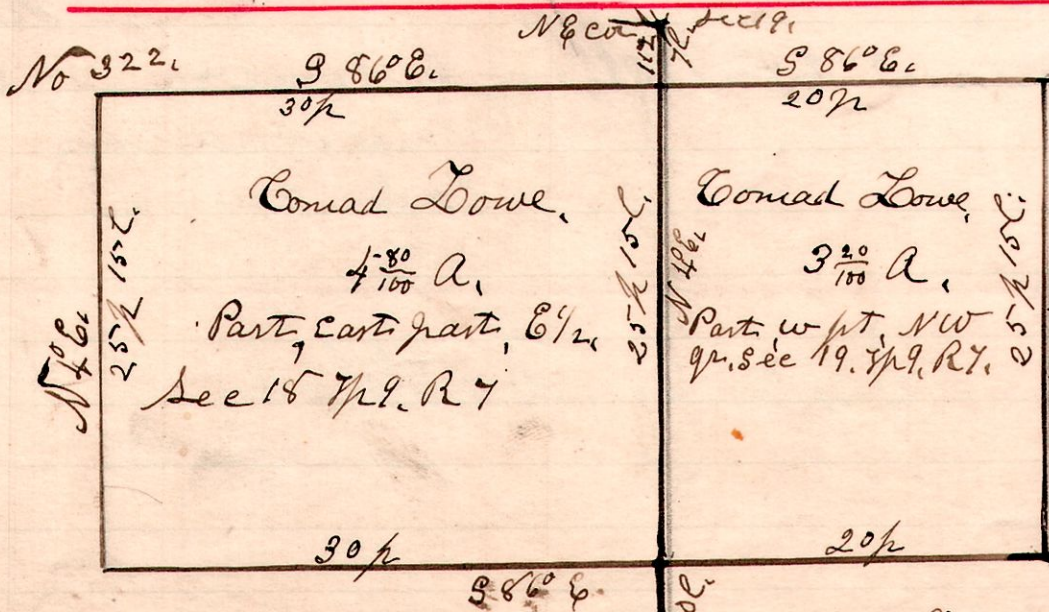


A Survey made for Sarah D Phillips, Being the north East part of a certain $1\frac{1}{4}$ acre tract of land, located in the east half of section 18. in Township 9. R. 7. for full description see Deed Record vol 42. Page 384.

Chain carriers
Guy R Palmer
Harris Palmer.

H. H. Robinson
County Surveyor

7 9 18+19.



A Survey made for Conrad Lowe, being the part of SE pt. of SE half of section 18. T. 9. R. 7. Containing 11 1/2 h south of N E corner of said sec. Also part of east part of NW q. Sec 19. T. 9. R. 7. Containing on west line 22 h

10 links north of south west corner of said q. chainmen H. H. Robinson & Conrad Lowe
N. W. q. Sec 19. T. 9. R. 7. S. M. Anderson