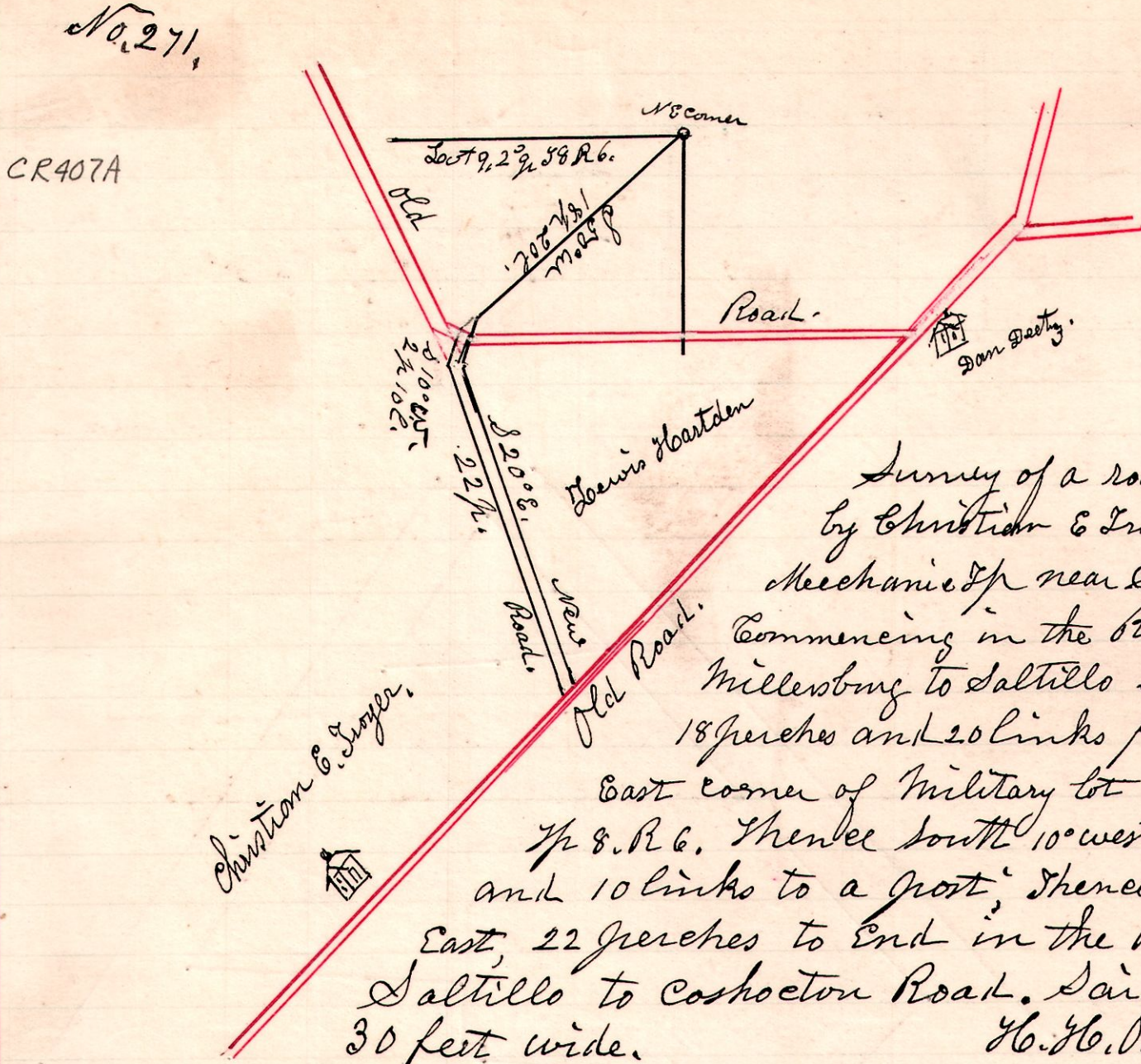
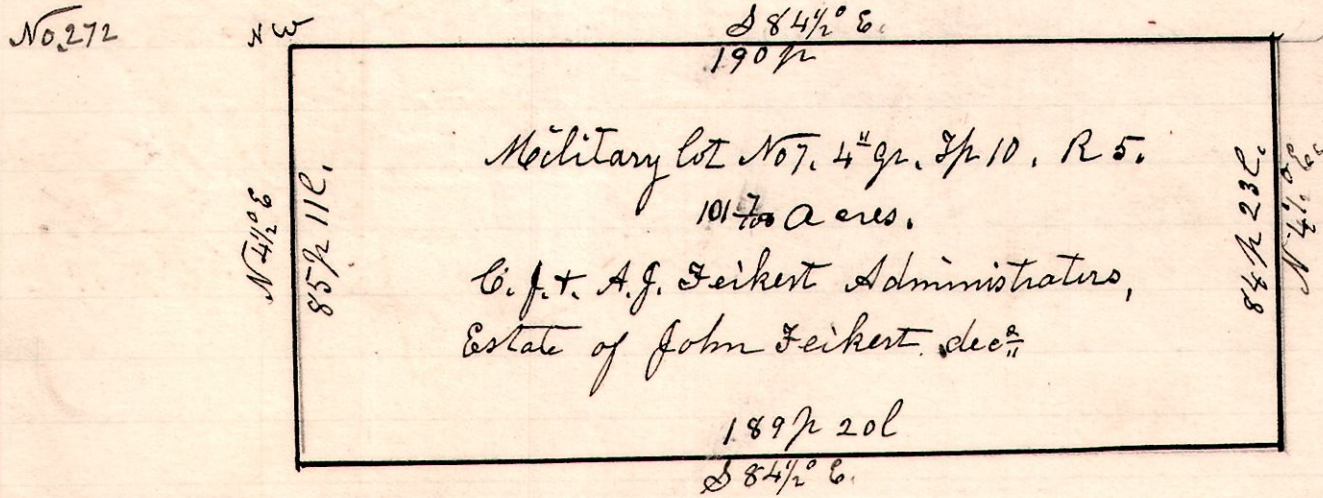


6 8 lot 9.



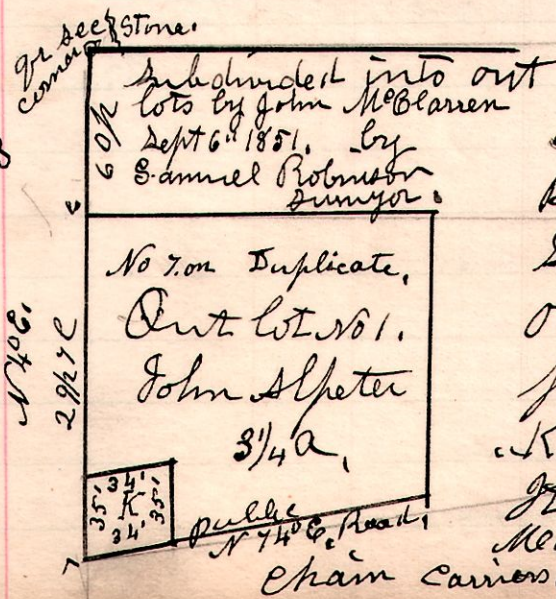
Survey of a road dedicated by Christian & Troyer, in Mechanics Tp near Saltillo, Commencing in the Road from Millerburg to Saltillo south 50° w, 18 perches and 20 links from the north East corner of Military lot No 9, 2<sup>d</sup> gr, Tp 8, R 6. Thence south 10° west, 2 perches and 10 links to a post; thence south 20° East, 22 perches to end in the Road from Saltillo to Coshocton Road. Said road is 30 feet wide.  
 March 11<sup>th</sup> 1901.  
 H. H. Robinson  
 County Surveyor.

5 10 lot 7.



Surveyed the above Military lot No 7, 4<sup>th</sup> gr Tp 10, R 5. to establish corners, locate and measure lines to get contents. At the north west corner I found original witness Hickory. The other corners were established by witness, and tracing lines, and was satisfactory to the land owners present.  
 March 14<sup>th</sup> 1901  
 Chain carriers, George Stelzback, J. W. Fry.  
 Present; C. J. Feikert, A. J. Feikert, Henry Mayhew, J. Stembach, J. Bear.  
 H. H. Robinson  
 County Surveyor.

Millerburg.



A survey made for John Almeter Being out lot No 1, in full Pomereneo subdivision of out lots to Millerburg, Ohio. The survey made to locate the part in K., being 34 by 35 feet. Found the part in K. to be wholly in the Public Road.  
 It being in the SW corner of said lot No 1  
 March 18<sup>th</sup> 1901  
 Chain carriers, J. H. Ginkle & H. H. Robinson  
 H. H. Robinson  
 Co Surveyor.