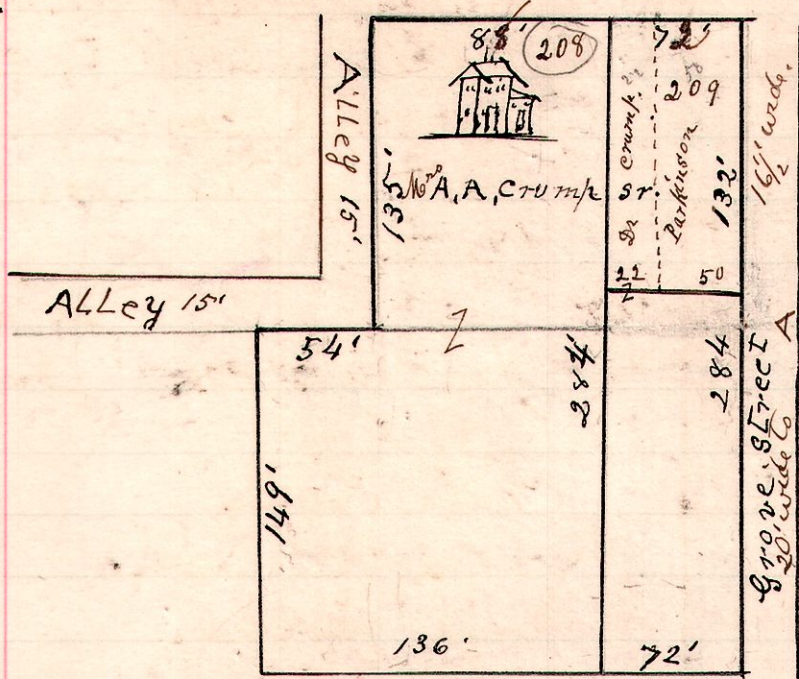


No 350

Millersburg Ohio.

Jackson Street 66'



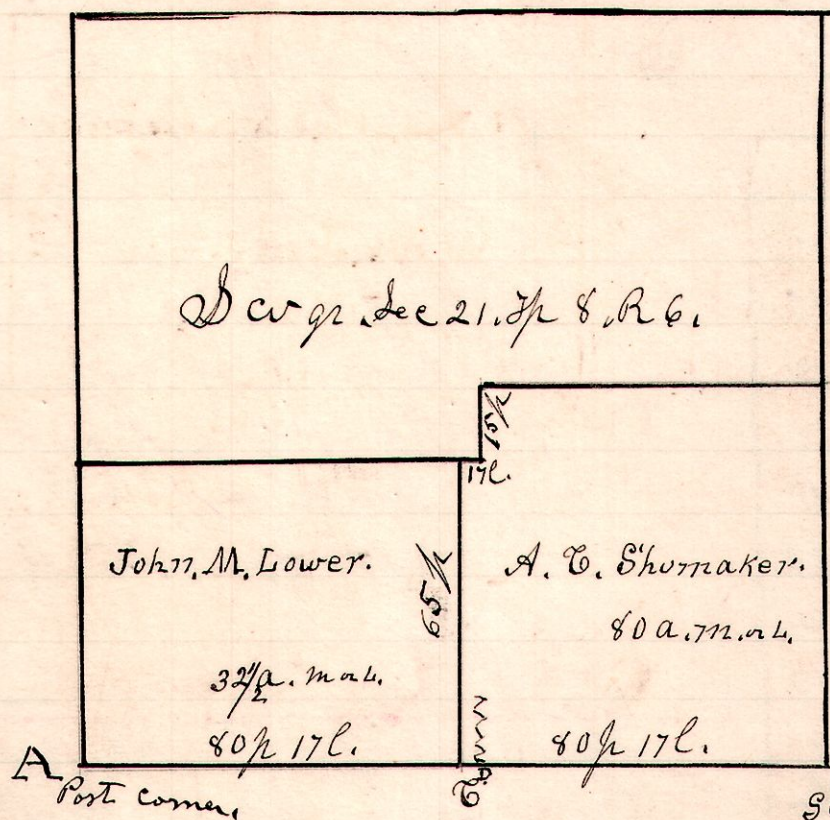
A survey made for Dr. A.A. Crump Sr., being bounded on the north by Jackson street, on the east by Grove street, and on the south by a 16 1/2 alley, in Millersburg Ohio, January 15th 1901.

H. H. Robinson
Co Surveyor.

132 1/2
105 1/2
15 3/4
157 1/2
158 1/2

6 8 21

No 361.



A survey made for A.C. Shumaker to locate line A.B, and corner at C. Line A.B. is 161 p 9 l long. C is equi distant between A+B. Making A.C. a C.B. 80 p 17 l long. Found on measuring west from the South East corner (at B) that the ends of 80 perches, there is a division rail fence running north. On investigation of original deeds, that both the Shumaker and Lower tracks are mentioned as of being 80 perches east and west,

which leaves 1 perch and 9 links between, or overplus, I establish the corner in the center, dividing the overplus between them, notwithstanding there is a rail fence 17 links east of the corner C. The point D, 80 perches west of the South East corner has for witness, W. O. 15 - N 44° E. 11 l. C. corner is 17 links west of D.

January 11th 1901.

Chain carrier.
Jacob Menser,
Otto Croft.

H. H. Robinson
County Surveyor.