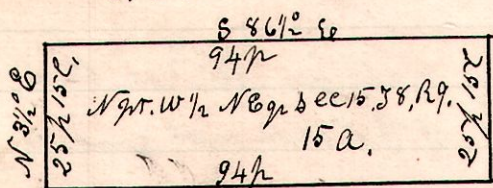


Survey of a Township Road petitioned for by Kirk Riffle, in Knox Township, Jos McKenzie, Dan Smith & Harry Stonebrook witnesses.  
December 16<sup>th</sup> 1899.  
H. H. Robinson  
Dept Co Surveyor.

Chain Carriers,  
Dan Smith & Harry Stonebrook,  
Marker  
Jos McKenzie.

No 303

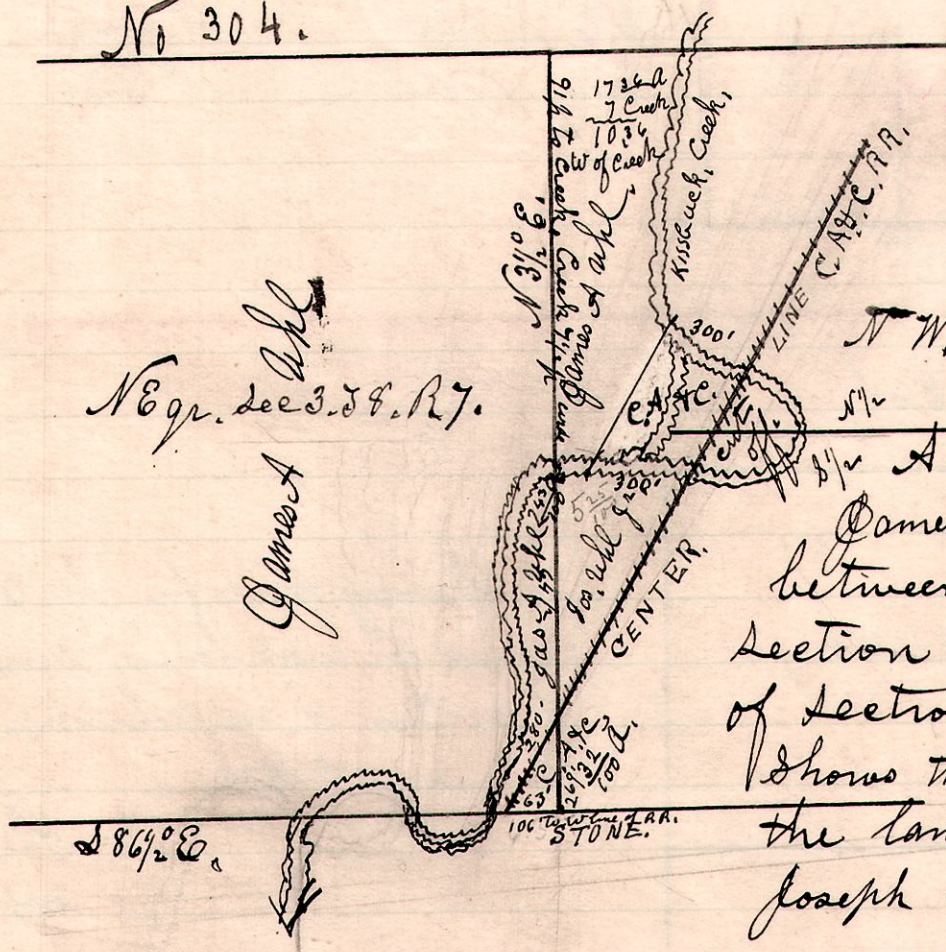


Surveyed this piece being the north part of the west half of the north west quarter of section 15, in Township 11 N, of Range 8, for W.S. Winterbottom, he having bought said west half except 15 acres off the north end of the same.

Frank Pipes } Chain carriers.  
R.H. Deeman }  
Chs Sheldon Flagman. Brown marker.

H. H. Robinson  
Dept Co Surveyor.

No 304.



A survey made Jan 6<sup>th</sup> 1900, for James A Ahl to locate the line between the north east quarter of section 3 and the north west quarter of section 2, T 8 R 7, which line shows the dividing line between the lands of James A Ahl, and Joseph Ahl Jr.

No 305.  
See 21  
WAYNE  
HOLMES  
See 28

See 22  
A COUNTY.  
COUNTY.  
See 27 T 15 R 12.

Chainmen  
John Gordon  
Frank Widson

A survey made for Henry Walter, Morris Akey & Criswell Bros, to establish section corner between sections 21, 22, 27, 28, which I did from an original witness tree still standing, and in good condition. I then ran the section line from a west one half mile to corner stone, then ran east 1/4 mile from it, and established lines to determine ownership of trees.  
Jan 15<sup>th</sup> 1900.  
H. H. Robinson  
Dept Co Surveyor