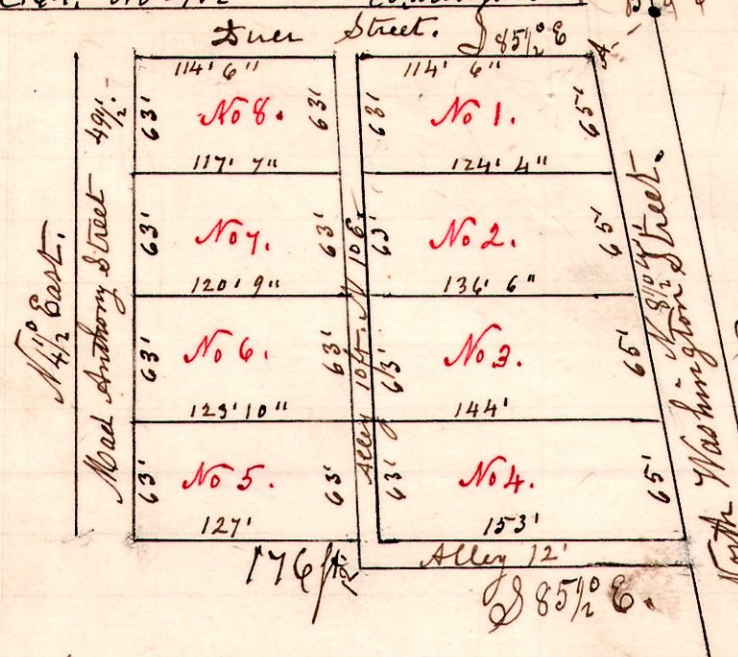


Page 164. No 294. This lot was not accepted by council, nor recorded by Co recorder, but was sold as a whole to S.H. Brightman, as shown on Page 164. No 298.

Note - This cor. is 168.3 feet west of Store cor. SE. cor. Lot 47. + SW cor. (W.L. Reidenbach. 1929) Lot 46

7 9 12

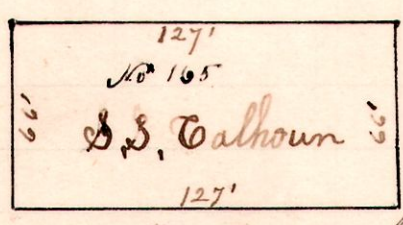
No 288.



A. S 70 1/2 W. 45 ft 7 inches from, Dec corner at B.  
 A Survey made for Hannah Schuler, laying out lot No 8 (45 now) into 2 lots to the town of Millersburg Ohio.  
 September 14<sup>th</sup> + 20<sup>th</sup> 1899.  
 H. H. Robinson  
 Dept Co Surveyor.  
 Stone 6 in, at NE corner of No 1.

No 289.

South Monroe St.

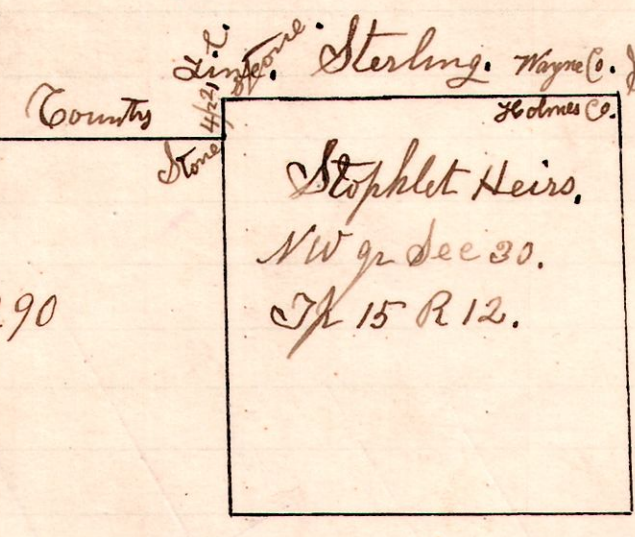


Surveyed lot No 165 in the town of Millersburg Holmes County Ohio, to establish the corners, and the line on the north, between S S Calhoun + G W Sharp.  
 October 2<sup>nd</sup> 1899.  
 H. H. Robinson  
 Dept Co Surveyor

7 9 12

12 15 30 NW

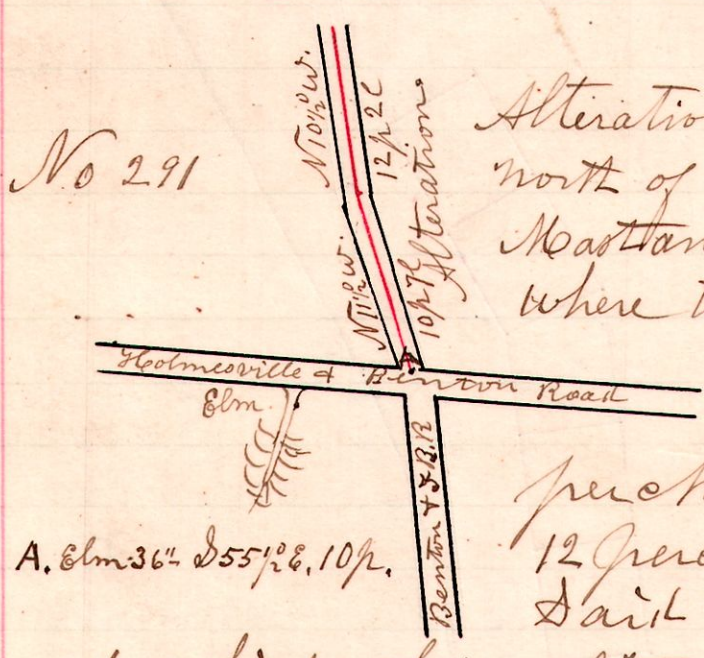
No 290



Surveyed the north line of said quarter to establish the north west corner and the north line.  
 October 5<sup>th</sup> 1899.  
 H. H. Robinson  
 Dept Co Surveyor

6 10 18 3<sup>rd</sup> qr.

No 291



Alteration of a county Road in Saltcreek Sp, north of Benton, petitioned for by Abraham Mastland others. The alteration commences where the Benton + Fredericksburg Road + the Benton and Holmesville roads intersect; thence north 11 1/2 west 10 perches and 7 links; thence north 10 1/2 west 12 perches and 2 links, there to end in said Benton + Fredericksburg Road, of which this alteration is a part.

A. Elm 36" S 55 1/2 W. 10 p.

October 9<sup>th</sup> 1899.

H. H. Robinson  
 Surveyor.

Viewers  
 Thos Amos,  
 Abe Dushell,  
 A B Albertson.

Chain Carriers.  
 Abe Dushell,  
 A B Albertson.

Marker  
 Thos Amos.