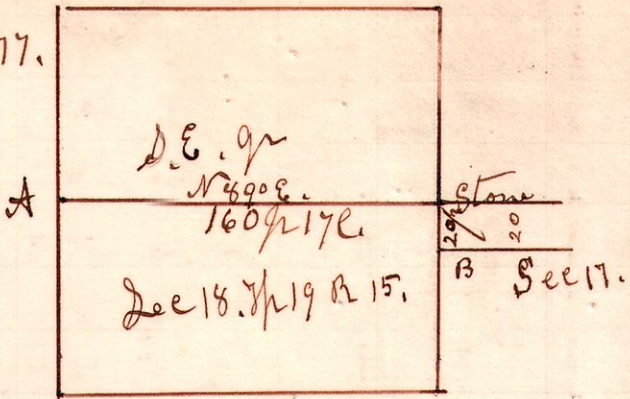


R S D
15 19 18 No 277.



A survey made for George Hefeffinger to locate line and establish corners, as shown in plat.

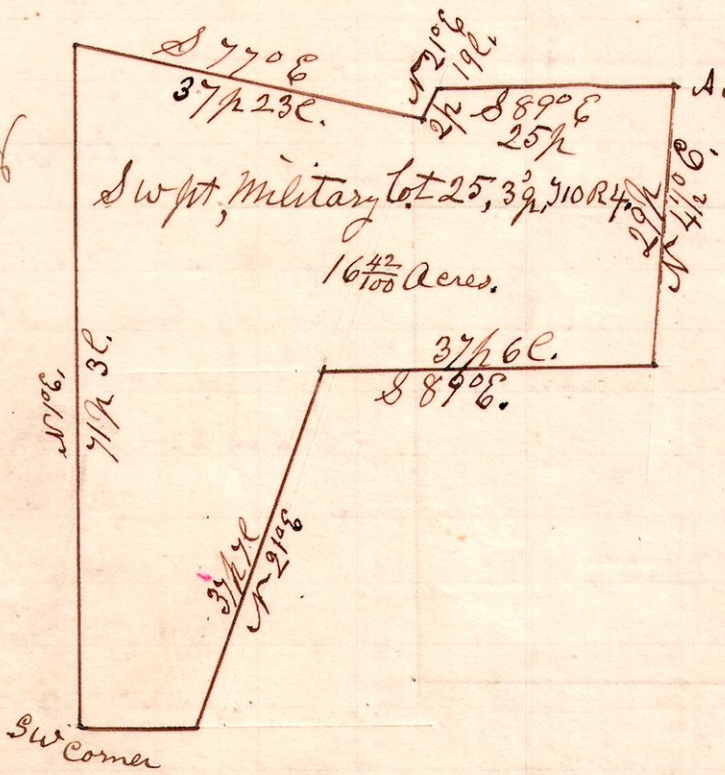
May 24th 1899.

H. H. Robinson
Deft Co Surveyor

A. Hickory 4. S 81° W. 2 1/2 l.
B. Gum. N 56 1/2° W. 4 1/2 l.
C. Maple 4. S 65 1/2° E. 20 l.

Chain carriers, Geo. H. Young, Henry Hefeffinger.

4 10 39th lot 25
No 278

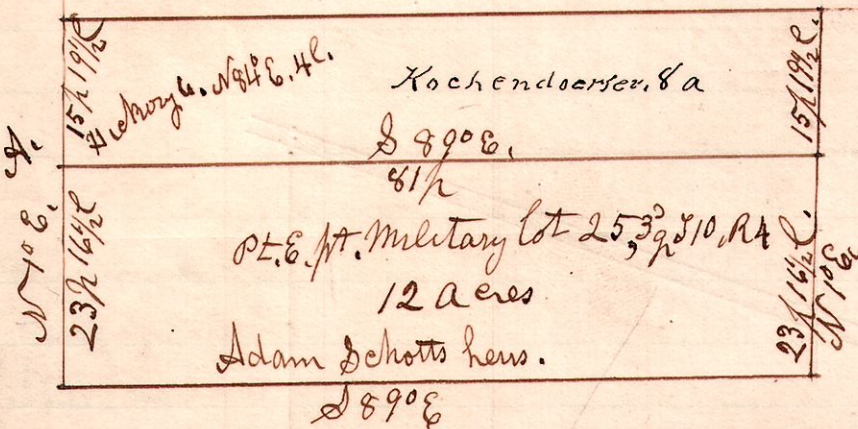


A survey made for the heirs of Adam Schott,

May 25th 1899.

H. H. Robinson
Deft Co Surveyor

4 10 32nd 25
No 279

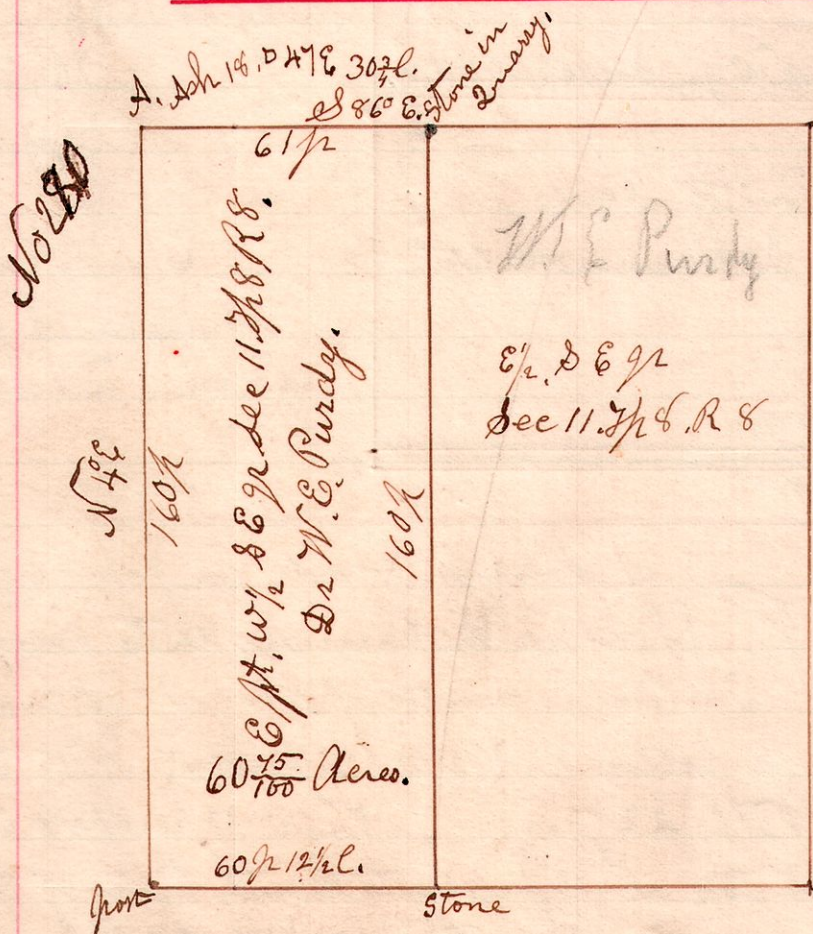


A survey made for the heirs of Adam Schott,

May 25th 1899

H. H. Robinson
Deft Co Surveyor

8 8 11 88



A survey made for W. E. Purdy to establish corners and lines,

June 2nd 1899.

H. H. Robinson
Deft Co Surveyor

Chain carriers,
Will Parkinson,
Wm Bennett.