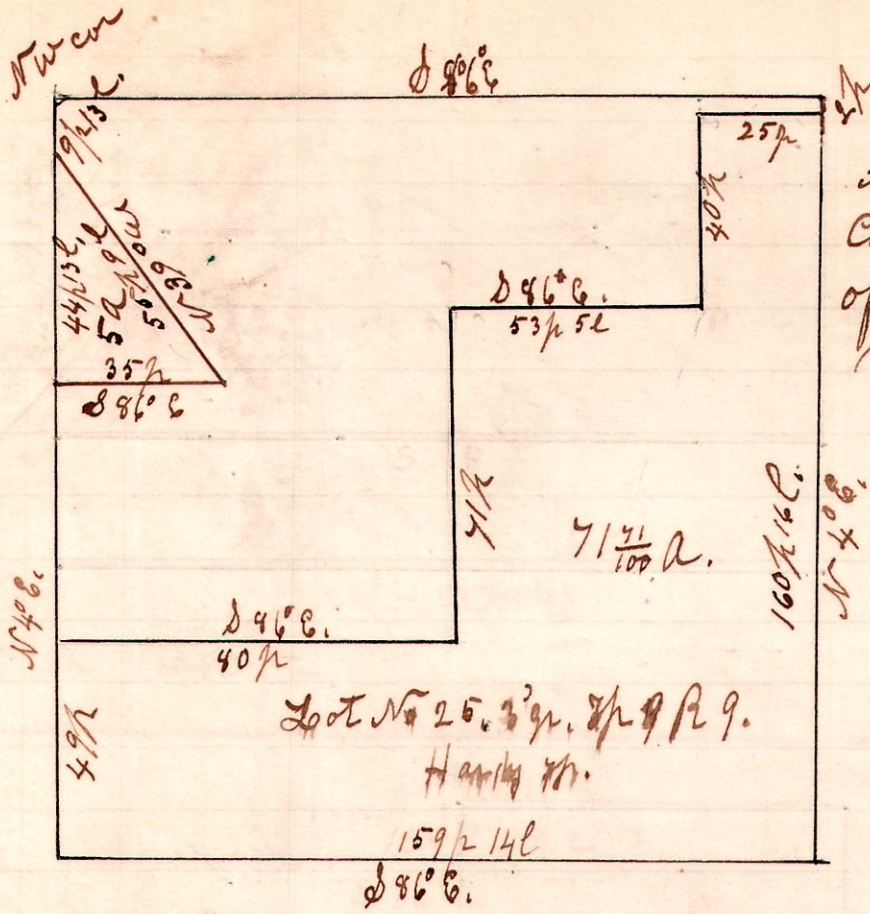


7 9 25, 3² 91

No 270



A Survey made by order of Court, to ascertain the amount of land in case of Shults vs Shults, in Partition, May 4th 1899.

H. H. Robinson
Dept Co Surveyor.

Chain Carriers,
John Horn, G. W. Blow

Commissioners,
John Horn, G. W. Blow &
H. H. Robinson

Markers Carl Christophers &
Wilbur Horn.

14 18 34+35

G. B. Shoup, R. M. Mathewson, A. J. Reynolds & Chas. Wise,
acted as Chain Carriers, Markers & Flagmen.

No 271

N 04° 13' Walnut, 12, west 29 p.

Eli McConkey,
S. E. q. sec 34, T. 18, R. 14.



Sw q. sec 35, T. 18, R. 14.

Art. D 791 - W. 33 c.

A Survey made for Garrison, No. 10, Albert Freese and Samuel Freese, Trustees of Ripley Sp, to locate the County Road which runs north between the south half of sections 34+35, R. 14, T. 18, and south between lands owned by Eli McConkey and John Anderson, I first established a corner at A from a witness tree taken by Samuel Robinson Jan. 5th 1830. I then ran the line from A to B and found a corner stone between sections 2-3-4-5. 2+3 being in T. 17, & 34+35, in T. 18, R. 14. The fences on both

sides of the center line, the Trustees fixed 30 feet as a sufficient width for a road on line thus surveyed, and Eli McConkey and John Anderson each agreed to move his fence back 15 feet from the center line of the road.

G. B. Shoup; R. M. Mathewson & R. N. Brown
Chain Carriers and Markers.

May 9th 1899

H. H. Robinson
Dept Co Surveyor.

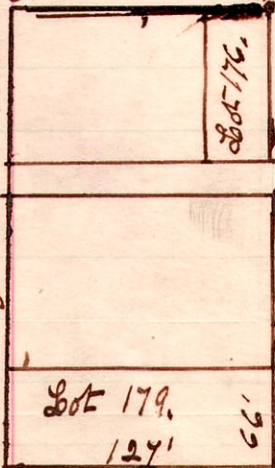
Approved by G. S. Cole

Co. Surveyor, Holmes Co.,

7 9 City

No 272

Jackson Street, Millersburg, Wis.



Orangeford street.

A Survey made for George Hites to establish lines and corners of lot 179 in the village of Millersburg May 16th 1899.

H. H. Robinson
Dept Co Surveyor