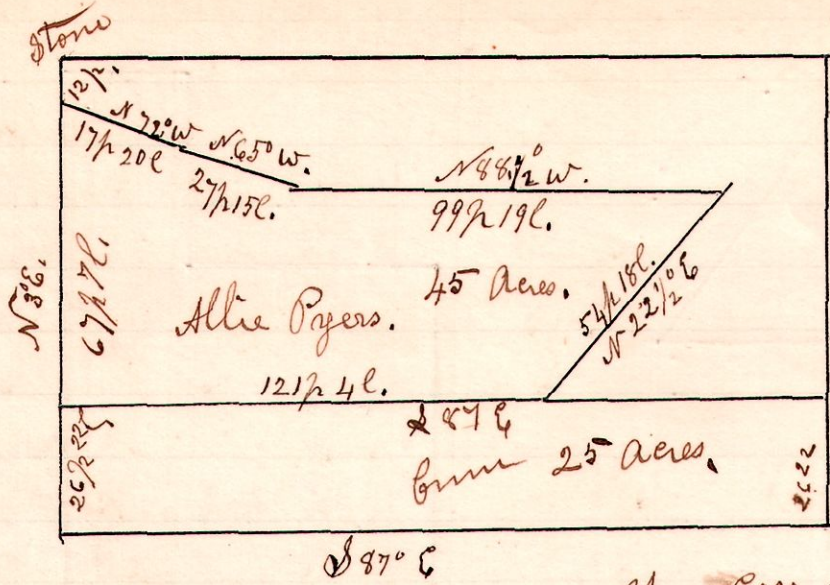


R 5 D lot
9 9 1st 4

No 267



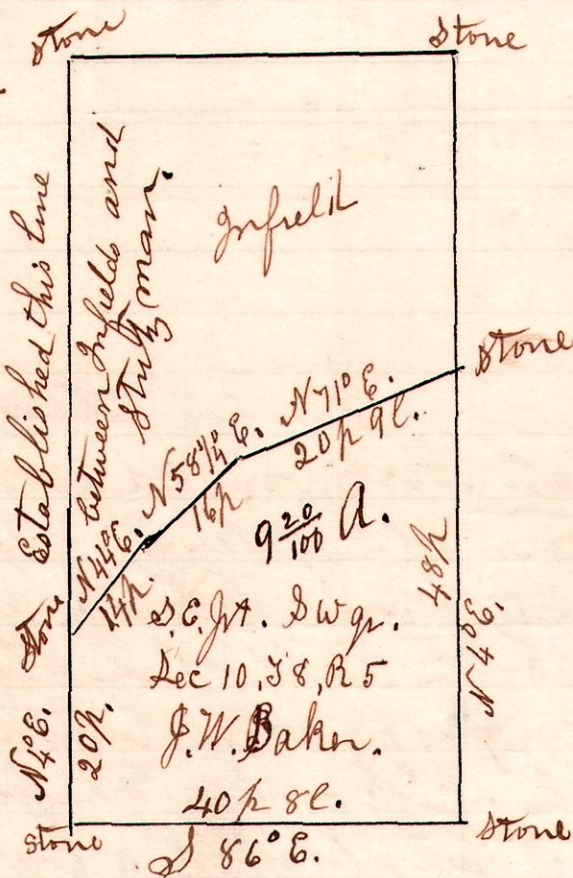
A legal Survey made for
Allie Pagers, by legal notice
served on Elias Gray, to
Establish lines and Corners,
Being lot No 4. 1st 9th R 9,
May 1st 1899.

H. H. Robinson
Dept of Surveyor.

Chain Carriers
L. Mackey, Lee Kelly. Approved G. L. Cole
Co. Sur.

5 8 10 dwgr.

No 268

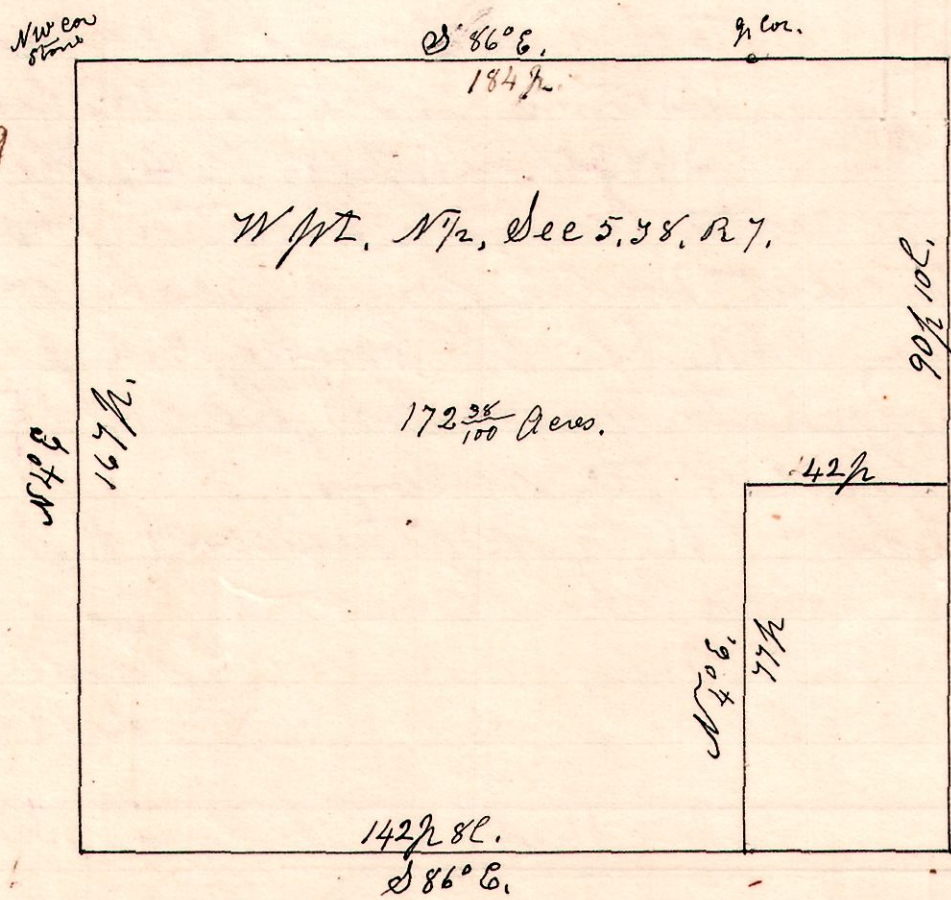


A Survey made for J.W. Baker
and Infield boys.
May 2nd 1899.

H. H. Robinson
Dept of Surveyor

Chain Carriers.
Henry Steely.
John Yeagley.

7 8 5 NW No 269



A Survey made by
order of Court, to ascertain
the contents of land in
case of Shilts vs Shilts,
in partition.

May 4th 1899.
H. H. Robinson
Dept of Surveyor

Commissioners.
John Horn, G. W. Blow + H. H. Robinson.

Chain Carriers.
John Horn, G. W. Blow.

Markers + Flagmen.
Carl Christopher + Wilber Horn.