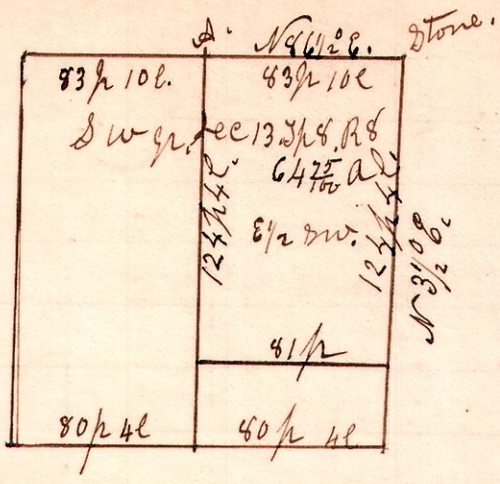


R J D  
8 4 13 1/2 SW 1/4

No 249



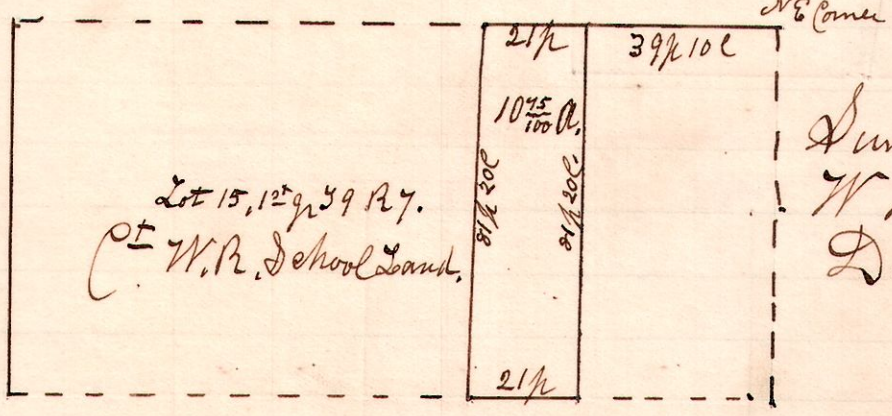
A W Oak. 14. S 44° E. 306.

A survey made for Wm Fites to get 63 1/2 acres off the north end of the east half of the of the south west quarter of section 13 in T 8 R 8. December 28<sup>th</sup> 1898.

H. H. Robinson  
Deft Co Surveyor.

7 9 lot 15. 10 1/4

No 250

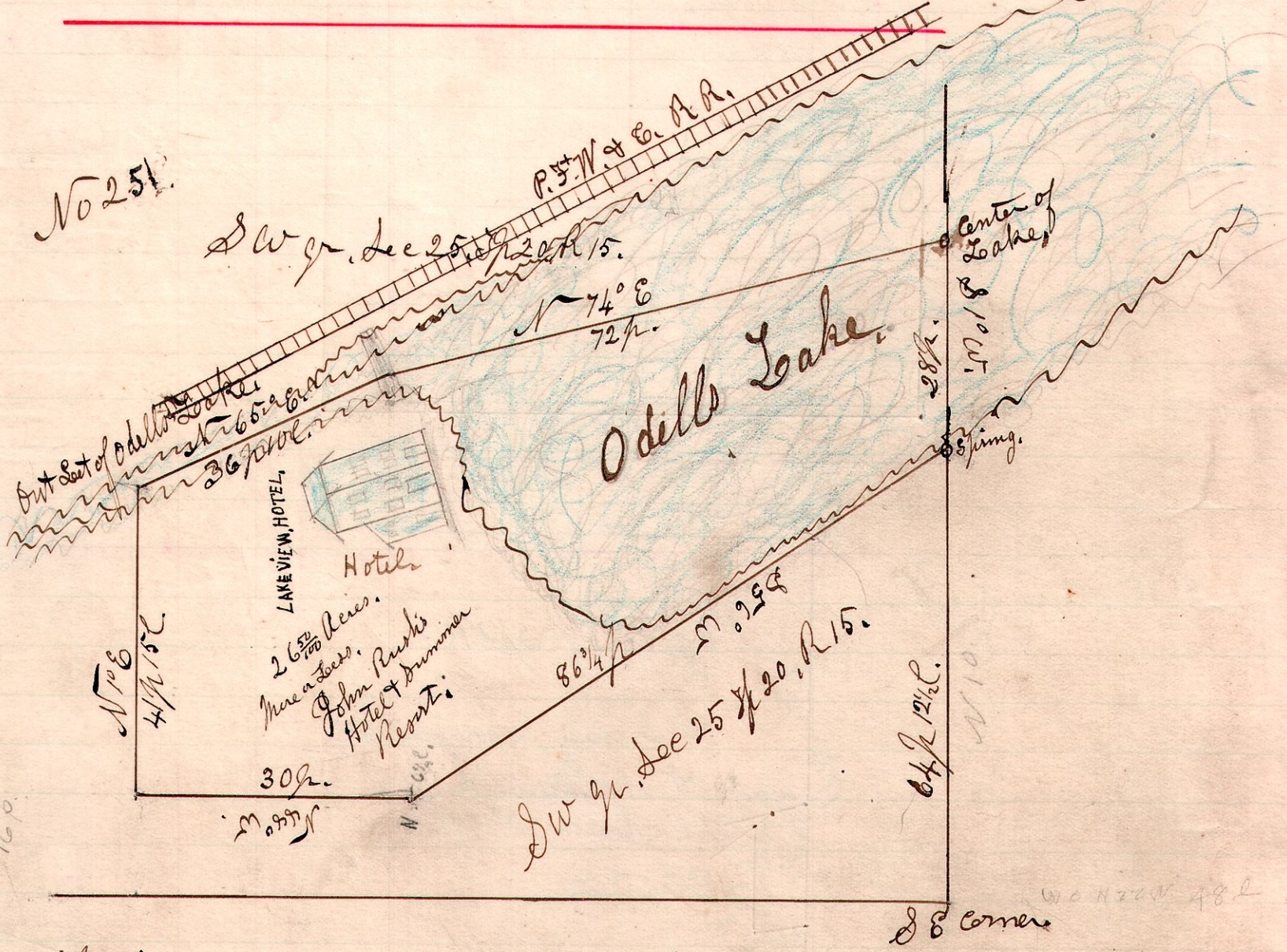


Surveyed the 10 1/4 acres for W W Adams. Dec 29<sup>th</sup> 1898.

H. H. Robinson  
Deft Co Surveyor.

15 20 25 1/4 SW.

No 251



A survey made to ascertain the amount of land contained in what is known as the John Rush's Odells Lake Summer resort property. The east line being in the Lake had to be got at by triangulation, and drafting, and may possibly not be absolutely correct. To be sold by order of court. January 16<sup>th</sup> 1898.

H. H. Robinson  
Deft Co Surveyor.