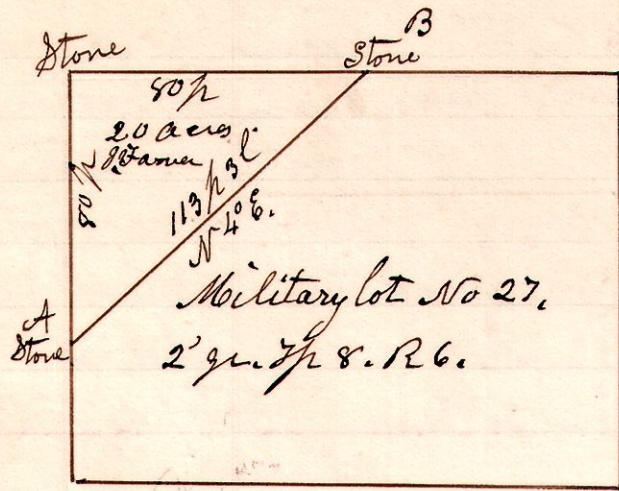


R 5 Sec lot 9
6 8 2 27

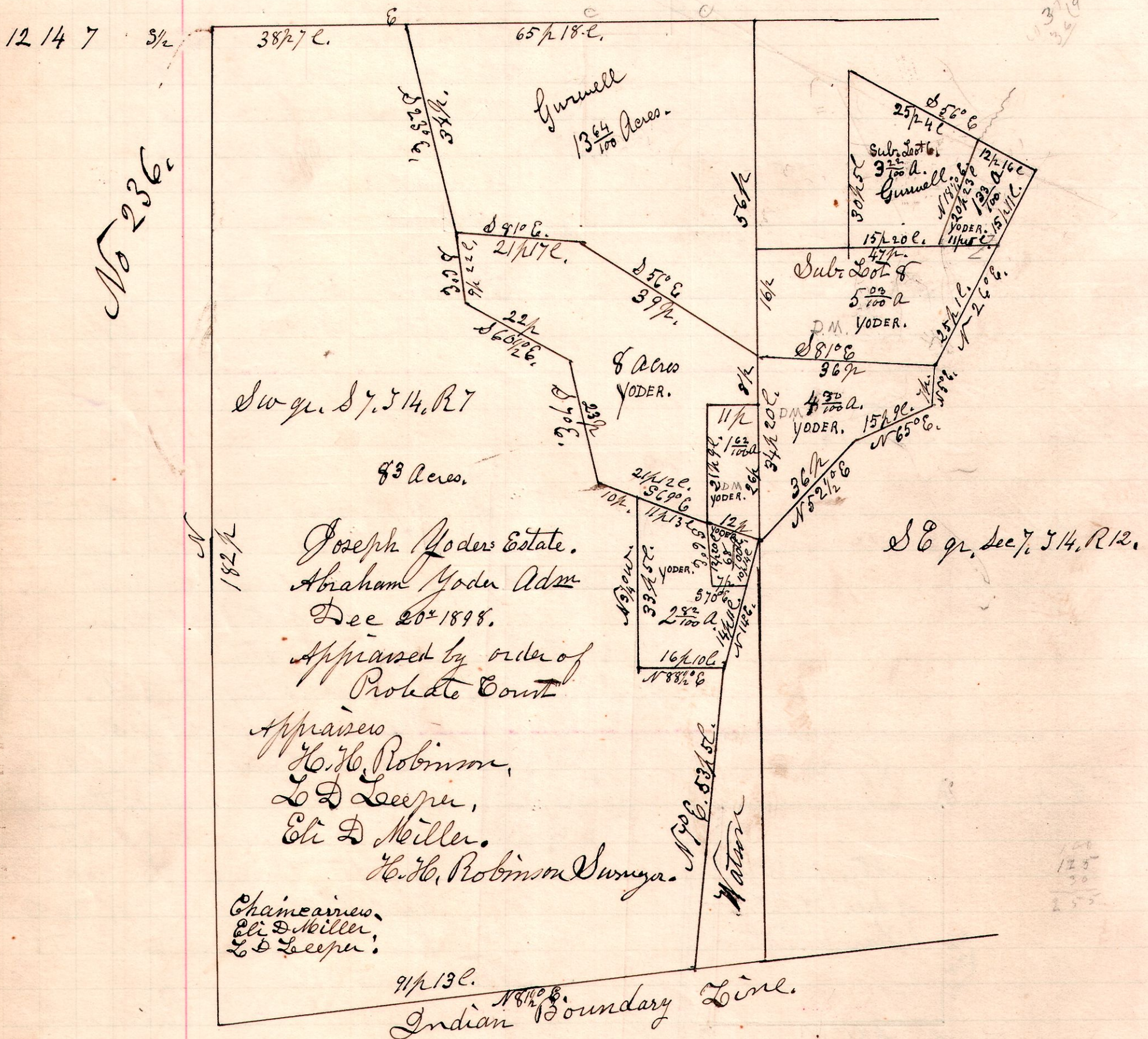
No 235



A Survey made for James +
Martinez, to determine the true
line A-B.
December 12th 1898.
H. H. Robinson
Dept. Surveyor.

25.20
12.16
37.36
36.40

No 236



The above representing lands belonging to the estate of
Joseph Yoder deceased, the plat and descriptions were
made partially from actual surveys made by me,
and partially from surveys made by Samuel
Robinson in 1841, and at different times since,
December 20th 1898
H. H. Robinson
Dept. Surveyor

125
30
255