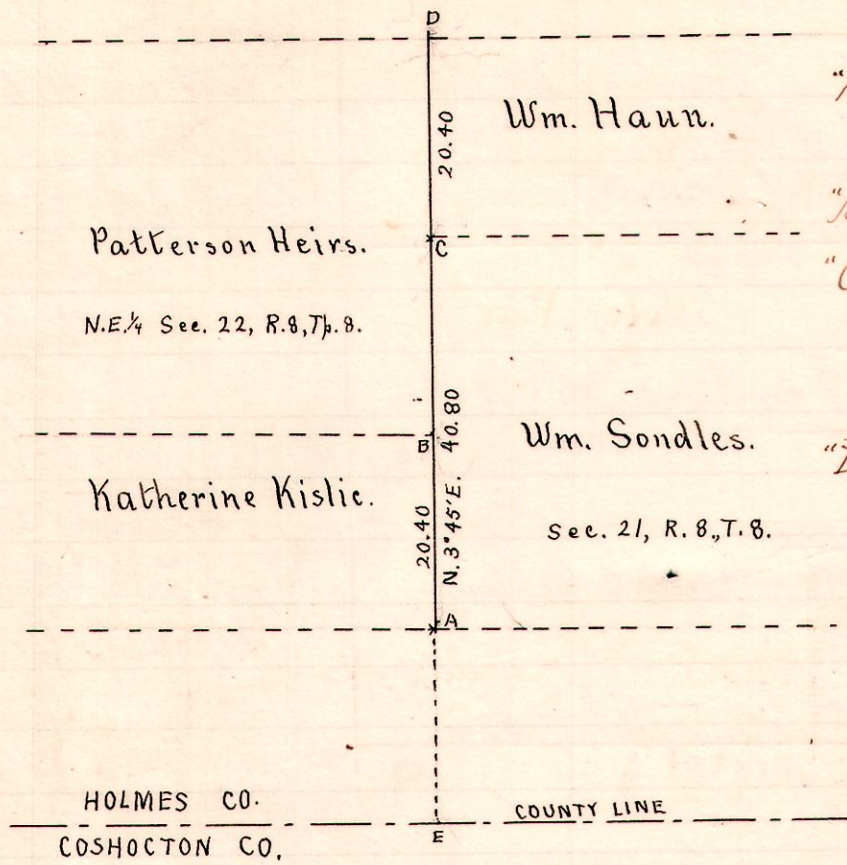


R. Tp Sec 21.

8 8  $\frac{21}{22}$

No. 224.



Notes.

"A" stone on line between Secs 21 and 22, R. 8. Tp. 8. 20.40 ch. from corner E.  
 "B" gr. sec. stone  
 "C" stone corner located and witnessed  
 { Chestnut 12" S. 3° W. 44 li.  
 { Hickory 11" N. 33° E. 38 li.  
 "D" Stone at n.w. cor. Sec. 21.

Surveyed the above for  
 Wm. Sondles and Joseph Patterson,  
 Aug. 1897

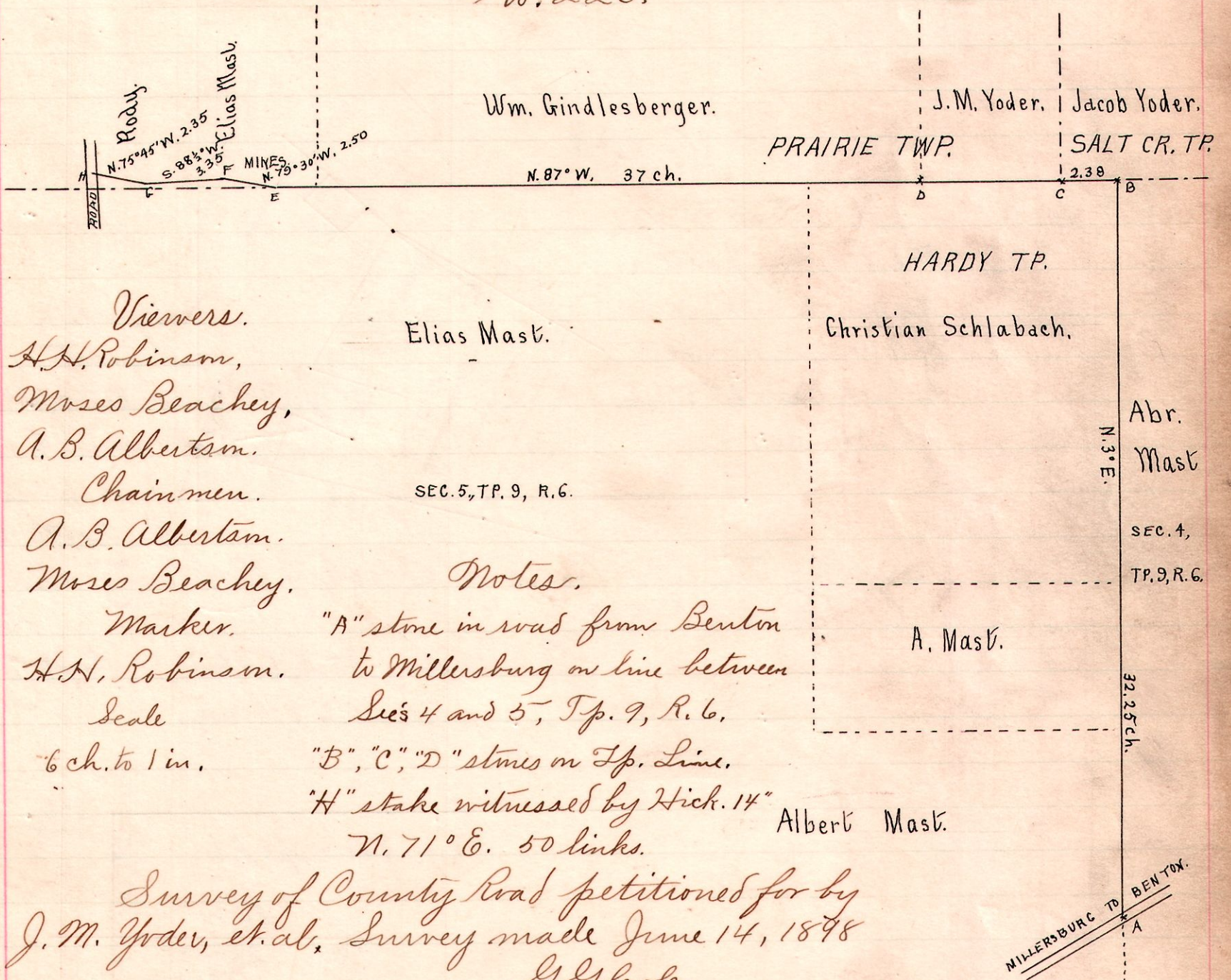
G. G. Cole

Co. Surveyor

Scale 20 ch. to 1 inch.

6 9 4  
 5  
 7 10 4th.

No. 225.



Viewers.  
 H. H. Robinson,  
 Moses Beachey,  
 A. B. Albertson.  
 Chainmen.  
 A. B. Albertson.  
 Moses Beachey.

Elias Mast.

Christian Schlabach.

SEC. 5, TP. 9, R. 6.

Abr. Mast

SEC. 4, TP. 9, R. 6.

Notes.

"A" stone in road from Benton to Millersburg on line between Secs 4 and 5, Tp. 9, R. 6.  
 "B", "C", "D" stones on Tp. Line.  
 "H" stake witnessed by Hick. 14" N. 71° E. 50 links. Albert Mast.

Survey of County Road petitioned for by J. M. Yoder, et al. Survey made June 14, 1898

G. G. Cole

Co. Surveyor.

MILLERSBURG TO BENTON