

R. T. Sec

9 8 ¹²/₁₉

No. 220.

Notes.

"A" Restored corner at center of Sec. 19, R. 9., Tp. 8. took witnesses } Hick. 12" N. 18 1/2° W. 98 1/2
Hick. 12" N 87 1/2° W. 144

"B" Cr. sec. stone between Secs 12 and 19.

"D" Corner stone at center, Sec. 12.

"E" Cross in rock.

"H" corner stone at s.e. cor. Sec. 12 found in good condition,

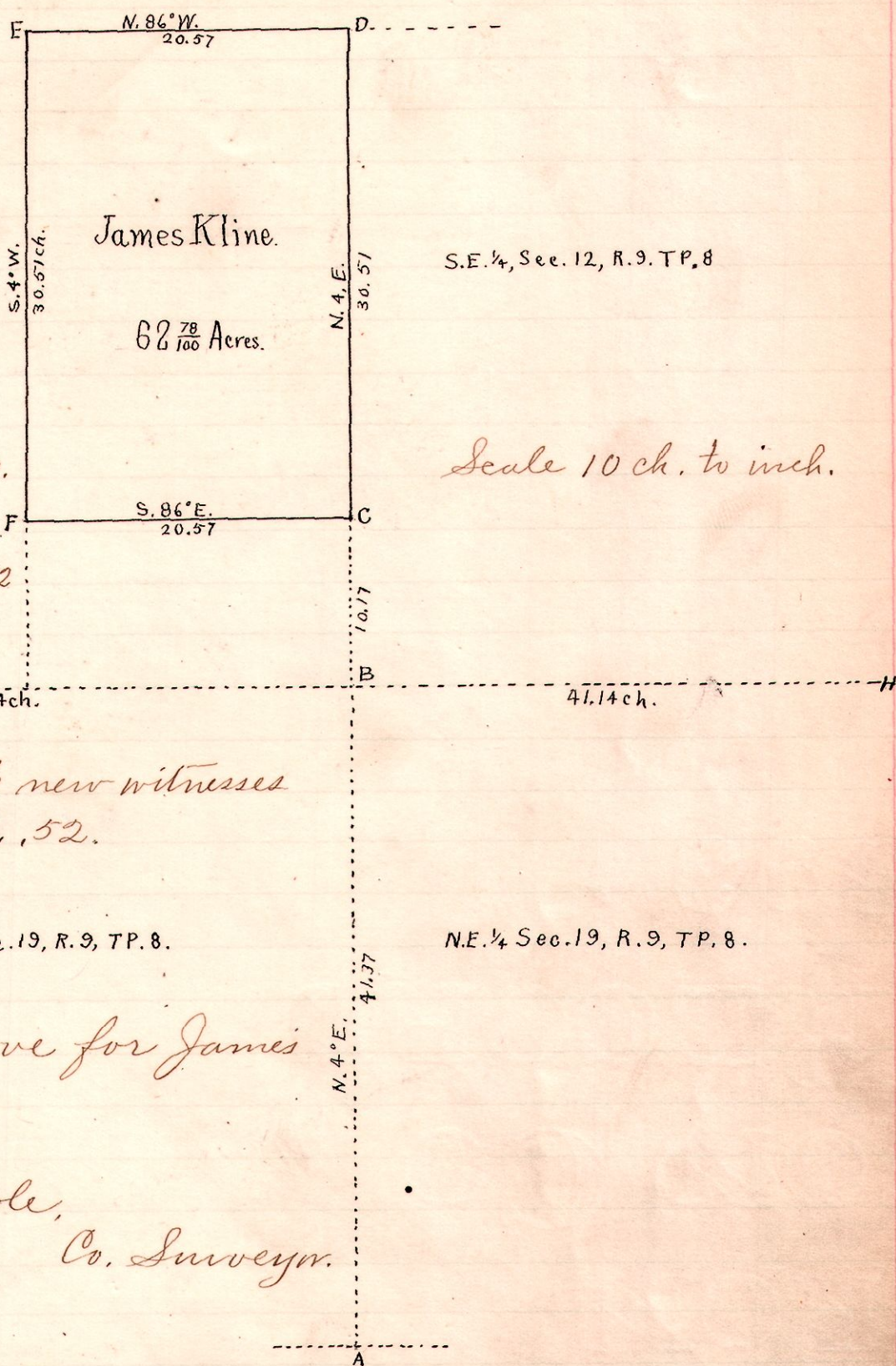
but witnesses gone, took new witnesses as follows Hick 16" S. 87° E., 52.

N.W. 1/4, Sec. 19, R. 9, TP. 8.

N.E. 1/4 Sec. 19, R. 9, TP. 8.

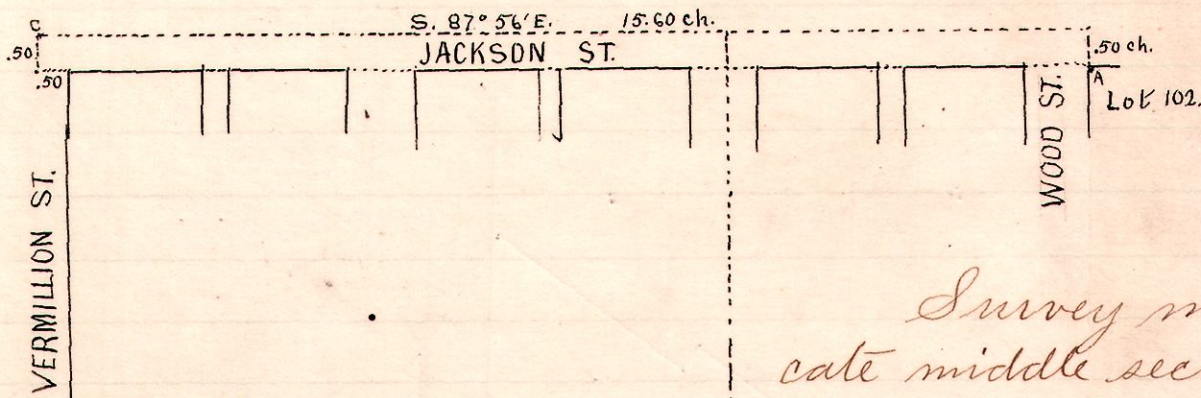
Surveyed the above for James Kline, May 25, 1897.

G. G. Cole,
Co. Surveyor.



13 13 3

No. 221.



Notes.

"A" extensim stone at N.W. cor. Lot 102, Holmesville, O.

"B" stone at s.w. cor. lot 70.

"C" middle section stone at restored to its original position, N. 87° 56' W. from "A", the magnetic variation being determined from relation of "A" and "B." Point "C" also verified by finding a portion of original stone buried 2 feet. Sandstone corner placed at "C" and

witnessed } B. Oak. N. 46° W. 2.66 ch.
 } Locust S. 66 1/2° E. 1.02 ch.

Survey made to re-locate middle section corner, of Sec. 3, Range 13, Tp. 13. Made for Holmesville Council.

G. G. Cole
Co. Surveyor.

Scale of flat. 3 ch. to 1 inch.