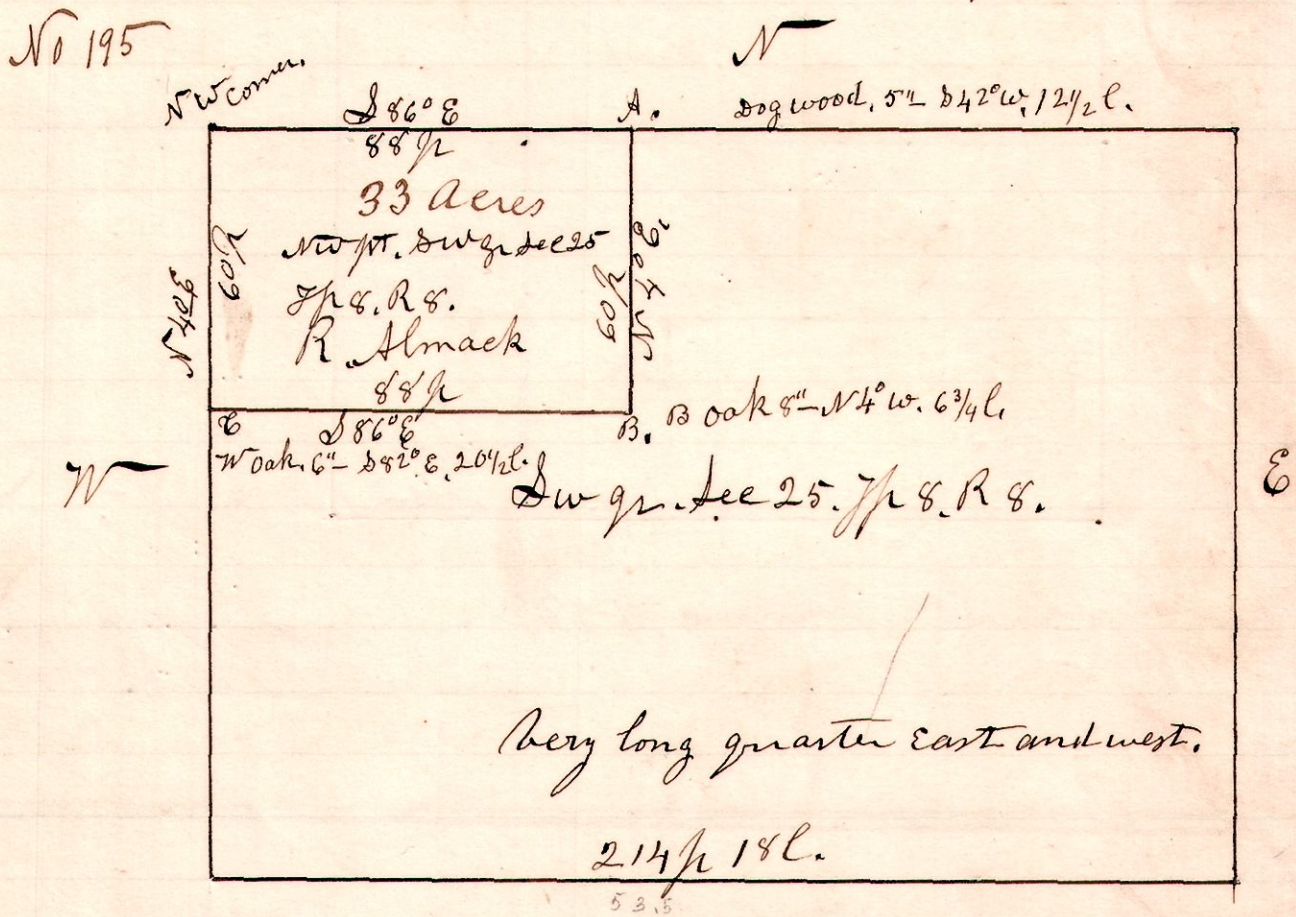


R. J. S.
8 8 25

A legal survey made by me January 10th 11th 1898, under a notice served by Silas Bower on Daniel Stuber & Maria Stuber; L. R. Almack; and C. E. McFee on the 18th day of December 1897. Said survey made to establish necessary corners and lines in Section 25, in township 8, of Range 8, to make a survey of 33 acres out of the north west corner of the south west quarter of said Section 25. I took as chain carriers, George M. Logsdon and McElland Loehard, to whom I administered the required oath. The quarter corner on the west side of said Section being lost, I ran and traced the entire west line of said Section from north to south and established the said corner at the intersection of the center line of the section east and west and the line from north and south, then surveyed off the required 33 acres as described in a deed from John Stansberry to Robert McFarland as recorded in deed record Volume 5 Page 446, as shown in the following plat.



Persons present. R. Almack; Silas Bower; Allen Bower; G. M. Logsdon; McElland Loehard; Daniel Stuber;

January 11th 1898.

H. H. Robinson
Deft. Surveyor

Approved by

C. S. Cole

Co. Surveyor, Holmes Co.