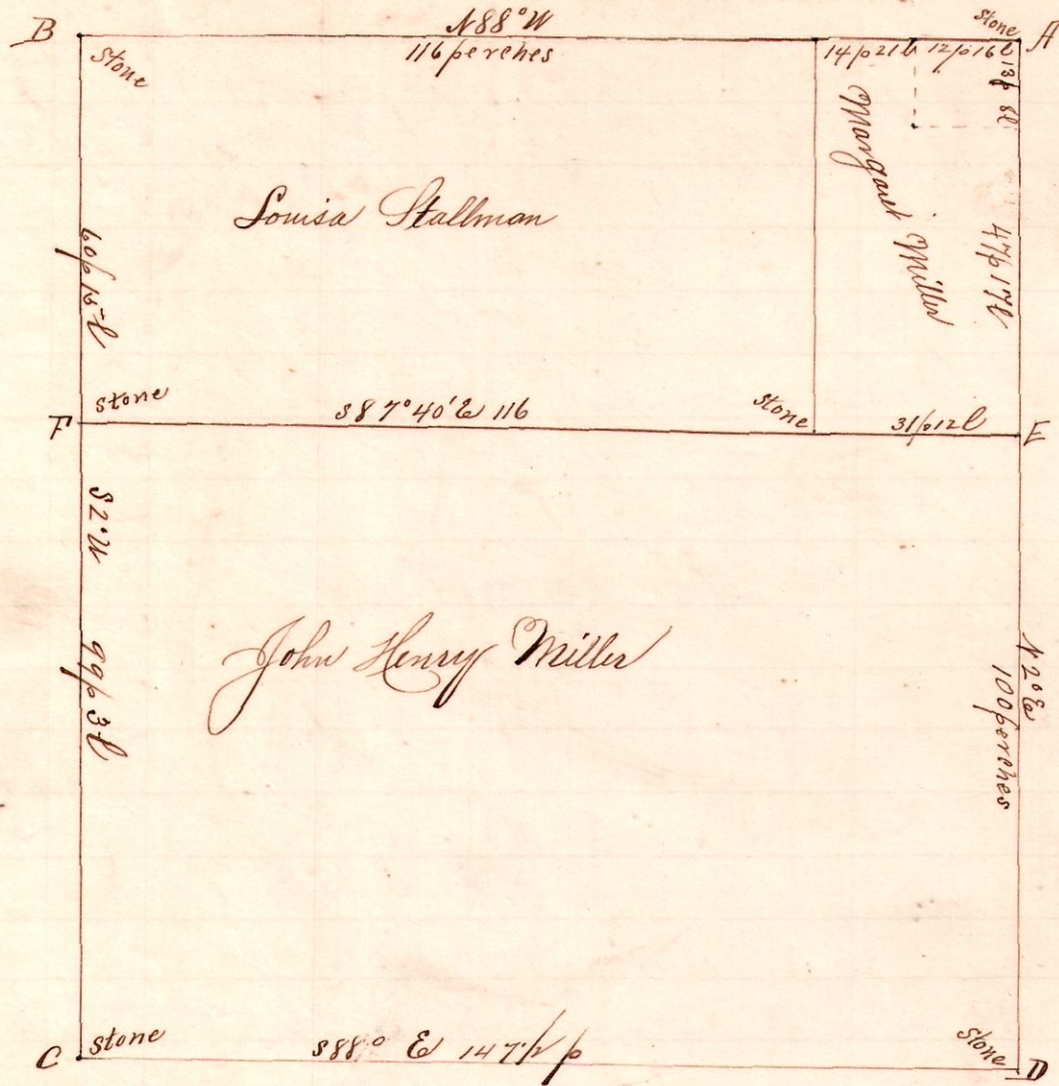


R 7/2 Sec 2  
13 13 18 NW 1/4

No. 183.



new witnesses to B.  
 N. Oak 24 N 46 24 55  
 " 27 82 3 8 44  
 " 3 8 11 8 25

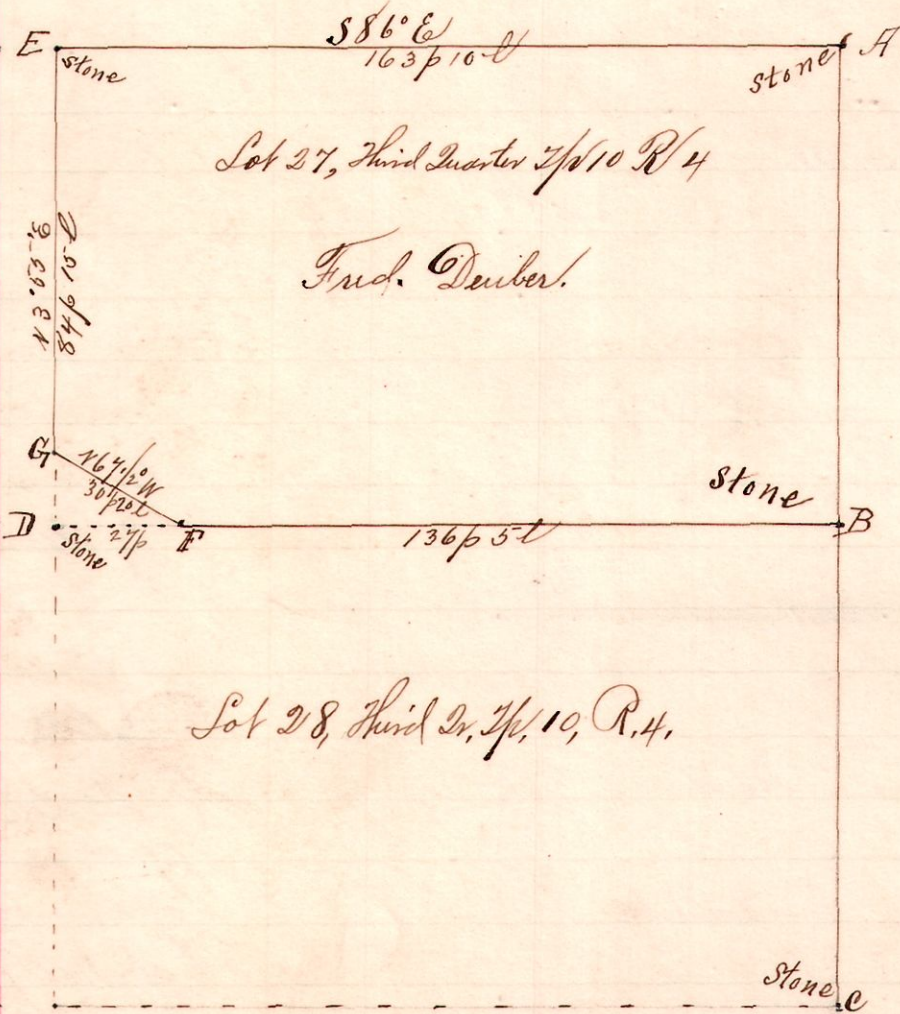
Chamman  
 Eugene Kauls  
 Allen Miller

Surveyed for Jacob Miller, Louisa Stallman, Margaret Miller, et al,  
 December 1, and 2, 1896.

Frank H. Genet, Co. Surveyor.

R 7/2 1/4 Sec 2  
4 10 3 27

No. 184.



Notes.

"A", the northeast corner Lot 27  
 32 1/4 7/2 10 R. 4. (Paint 7/2)  
 "C", a stone at the southeast  
 corner Lot 28, 32 1/4 7/2 R 4  
 S 3° 45' W 199 p 15 l from A.  
 Original Hickory witness good.  
 "B", the southeast corner said Lot 27,  
 we placed stone 99 p 20 l from  
 A and C, on line  
 "D", stone at SW said Lot 27, 163 p 5 l from B  
 "E", stone at the Northwest corner said Lot  
 N 3° 55' E 99 p 15 l from D and S 86° E  
 163 p 10 l to A.

Chamman  
 H. Deuber and L. J. Deuber,

Surveyed the above for H. Deuber and Mary Hoerger,  
 Administrators of the estate of Fred. Deuber, deceased,  
 December 3, 1896. to determine the corner B, and lines of Lot 27,

Frank H. Genet,  
 Co. Surveyor,  
 Holmes Co,  
 O.