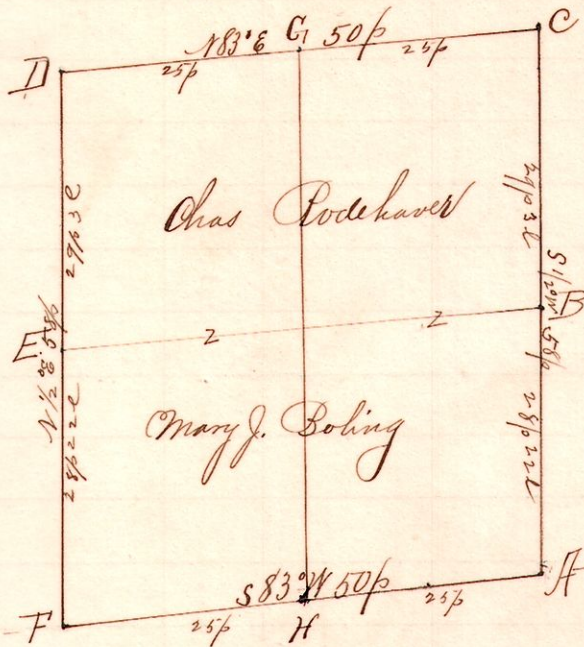


R 3/4 Sec 2, R. 15  
15 19 24 SW SE

No. 179

Notes.



"A," stone at the southeast corner of the southwest quarter of Section 24, T. 19, R. 15.

"F," a post on the south line of said section, on the old Indian Boundary Line S 83 1/2 W 50 perches from A.

"D," a stone N 1/2 E 28 p 22 l + 29 p 3 links from F.

"C," a stone we placed on the east line said quarter N 83 3/4 W 50 p from D and S 1/2 W 29 p 3 l + 28 p 22 l to A.

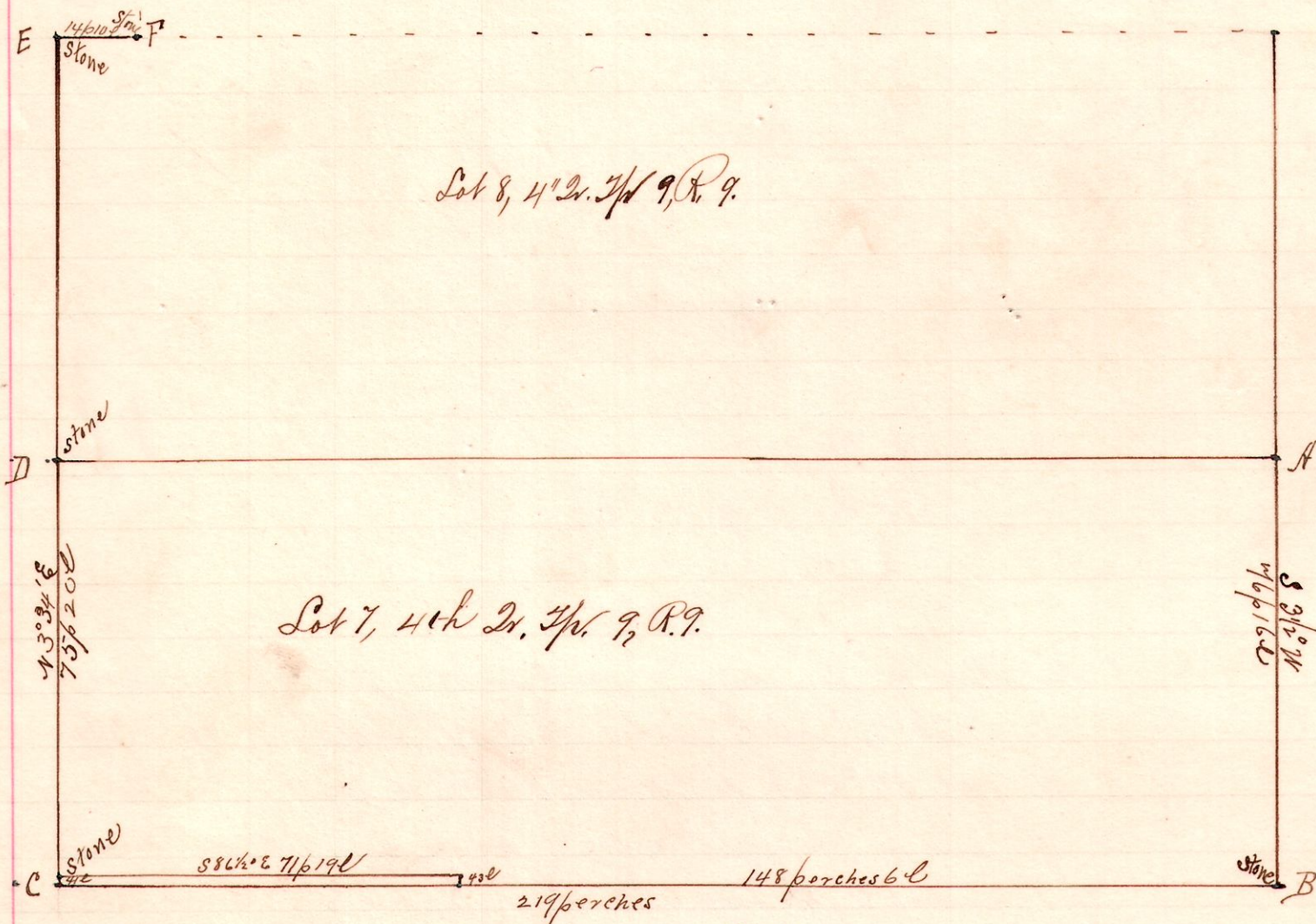
"G," a post S 1/2 W 58 p to A. E.B. division line between Rodchaver & Boling. G-H, future " " " " "

A Survey for Geo W Kaylor and Chas. Rodchaver to determine the line C-D and the corners C and G; Also to divide tracts by line G-H for Boling & Rodchaver. Sept. 24, 1896.

Frank H. Gunt, Co. Surveyor.

R 3/4 Sec 2, R. 15  
9 9 4" { 8 }  
                  { 7 }

No. 180



"A," placed a stone at N E Lot 7 from orig ash stump took as new witnesses W ash 84 36 E 8 1/2 l and W ash 6 83 36 E 20 l

"B," the southeast corner was located half the distance across the east end Lots 6 & 7 took as new witnesses: - W oak 18 N 33 E 7 1/2 l and Hickory 4 S 50 E 1 link,

"C," the southwest corner located similar to B; placed a stone N 86 1/2 W 21 9 p from B, new witnesses: - Walnut 4 S 58 E 14 l and Wild cherry 6 S 15 1/2 E 22 links,

"D," a stone at N corner said Lot 7; found original gage good.

Surveyed for Samuel Kinney, Samuel Jordan, et al, Oct. 28, 1896.

Frank H. Gunt,  
County Surveyor  
Holmes Co. O.