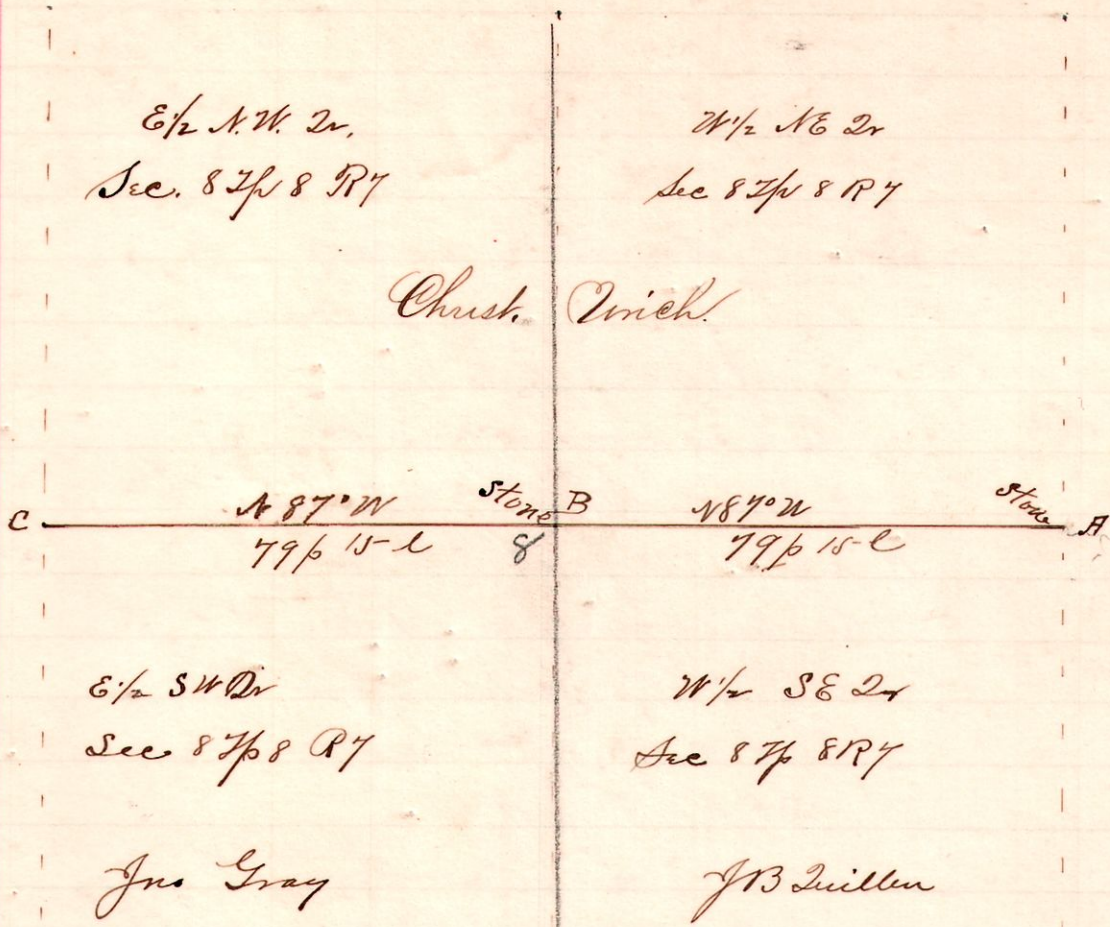


R 7p Sec
7 8 8 W

No. 173.



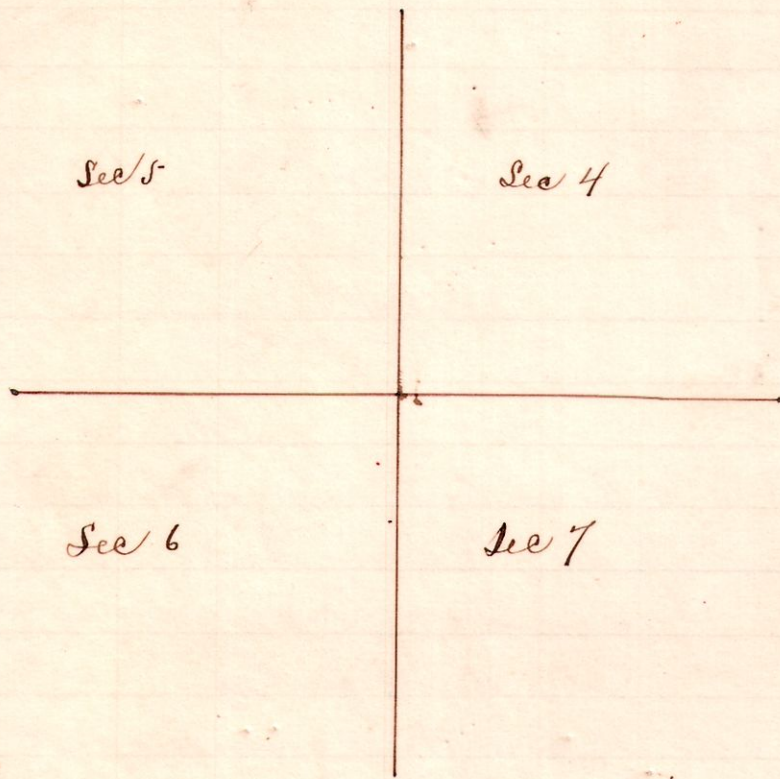
Notes
 "A," the southeast corner
 W 1/2 N 1/4 Sec 8 7p 8 R 7
 established stone corner
 from B Walnut 12 East 19
 Taken by Silcott
 "B," the center of said Sec 8
 N 87° W 79p 15-l from A
 found witness taken
 by Silcott good, i. e.,
 W oak 20 x 40 x 20 7,
 from which we
 established a stone
 corner, and traced
 the line to C, the
 southwest corner
 of Unich's land,

Surveyed to determine the line ABC and the corners A, B, C
 May 22, 1896.

Frank D. Genet, Co. Surveyor

No. 174.

R 7p Secs
5 8 {4, 5} Corner



Notes.
 The corner for sections 5
 4, 7 and 6, 7p 8 R, being
 indispute, we found by
 tracing the line between
 sections 4 and 5, over
 established corner;
 also by tracing the
 line between 4 and 5
 on one side, 7 and 6 on
 the other, - that a large
 oak 18 in. in diameter
 and which had been
 claimed to be the corner,
 is the true corner.
 We placed a large stone
 4 feet long with delf and
 slate underneath, as a
 witness N 79° W 11 links from
 said tree.

Assistants.
 Dr. A. M. Guillard, Minard Lister.
 A. M. Hershberger

Surveyed for Dr. A. M. Guillard, et al, of Charm, O.,
 July 1 and 2 and 3, 1896.

Frank D. Genet,
 Co. Surveyor,
 Holmes Co.,
 O.