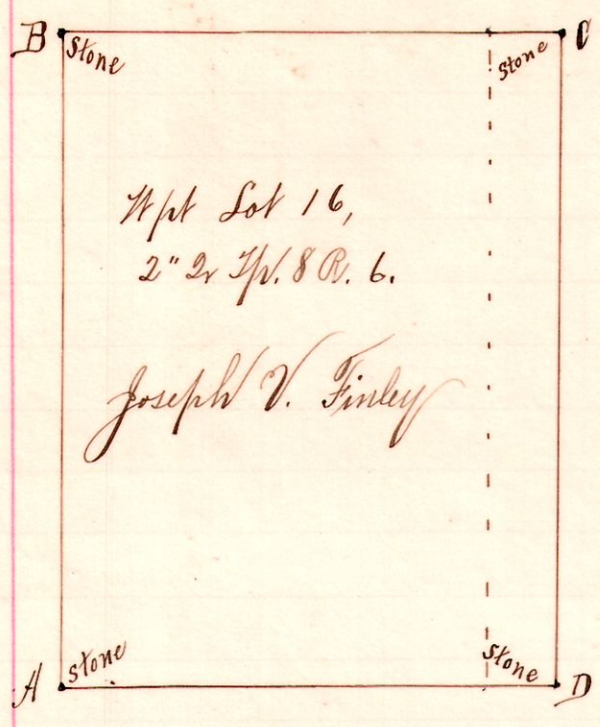


R 2^d 2^d Lot 16
6 8 2^d 16 2^d

No. 158



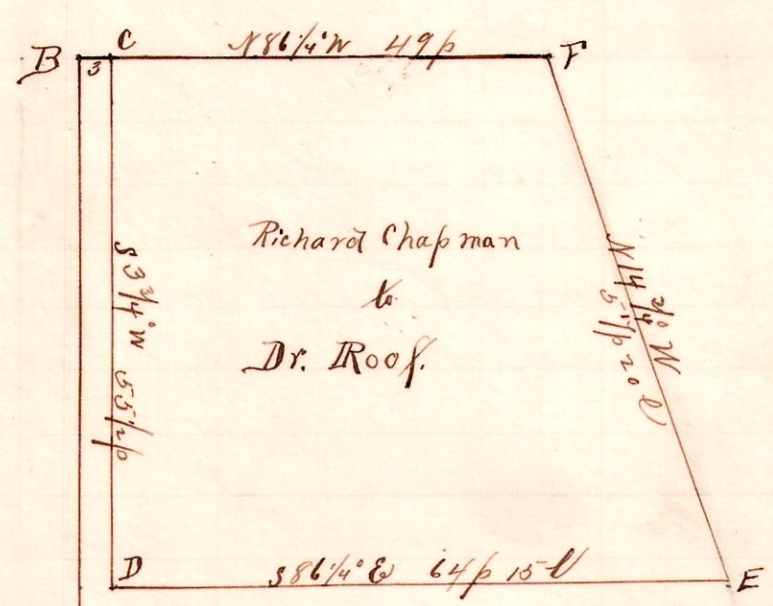
Notes.
 "A," a stone we placed at the southwest corner of said Lot 16, 2^d 2^d 1/4 8, R. 6, by agreement of interested parties, John Marty and J. V. Finley. We placed glass and pottery under the same; also a piece of sewer pipe 20 inches long; and took as a new witness a Black Walnut 24 N 76¹/₂ W 82¹/₂ links.
 "B," a stone at the northwest corner of said Lot 16, N 3° 40' E 102 p 20 l from A.
 "C," a stone on north line, we placed S 86° 10' E 77 p 20 l from B.
 D, stone on S line S 3° 40' W 102 p 20 l from C.

Assistants:
 Albert W. Fogden, Clifford Finley
 and Joseph V. Finley
 Surveyed for Joseph V. Finley, A. W. Fogden, Jno Marty, et al,
 Sept. 4th 1895.

Frank H. Genet,
 Co. Surveyor.

R 2^d Sec 2^d 14
7 8 14 3^d 14 2^d

No. 159.



Notes
 "A," a stone pile at the southwest corner of Section 14 2^d 14th R. 7, which we established as the southwest corner of the southwest quarter of said Section 14.
 "B," the northwest corner of said southwest quarter of Sec. 14, is N 3 3/4 E 162 p from A.
 "C," a post on the north line of said quarter is S 86 1/4 E 3 p from B.
 "D," a post S 3 3/4 W 55 1/2 p from C.
 "E," a post in the county road S 86 1/4 E 64 p 15 l from D.
 F, a post in said road, at the north line of said quarter N 14 3/4 W 57 p 20 l from E and S 86 1/4 W 49 p to C.

Chamman:
 Hugh Koshey
 Wm Anderson.

A Survey for Richard Chapman, Dr. Roof and others
 Oct. 14, 1895.

Frank H. Genet,
 Co. Surveyor,
 Holmes Co.,
 Ohio.