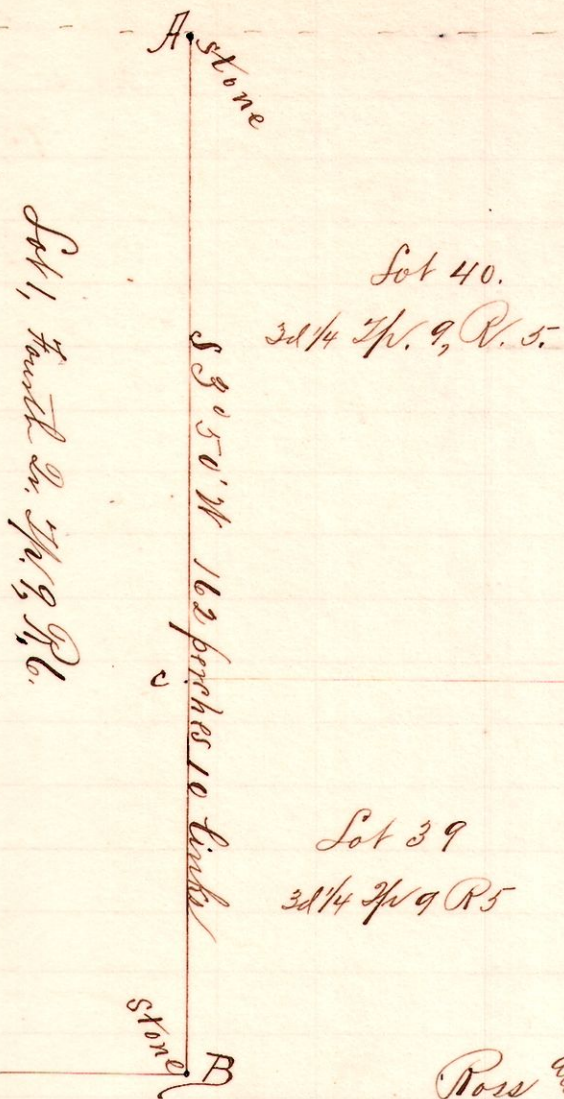


R Tp D<sup>o</sup> Lot  
5 9 3 32 1/4 40  
6 9 4 1

No. 150.



Notes.

"A," stone at the northeast corner, Lot 1, Fourth quarter township of Twp. 9, R. 6; also the NW corner Lot 40, 3/4 Twp 9 R5 Original Hickory 12 S 9 W 18 and Beech 12 N 23 E 52 in good condition.

"B," stone in the public road, on the line between said Ranges 5 and 6, and at the southeast corner of said Lot 1, S 3° 50' W 162 perches 10 links from A.

"C," the southwest corner of said Lot 40.

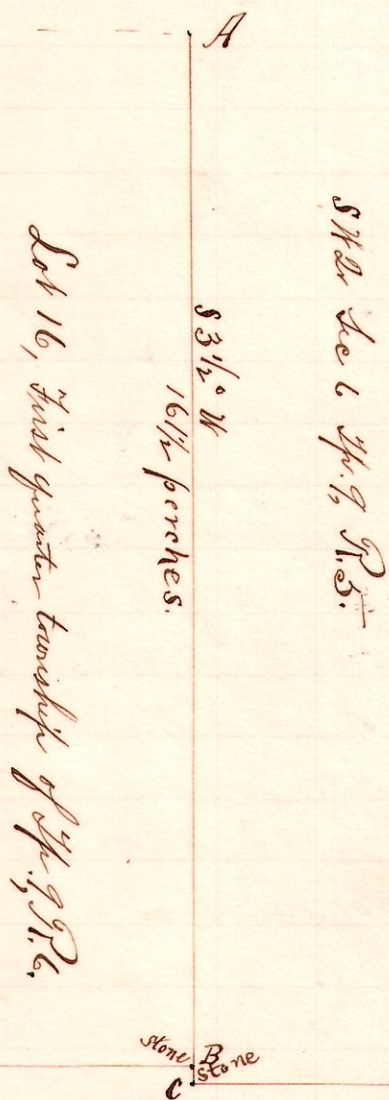
Surveyed the above for Cordelia Ross and David Hitchcock, et al, to determine the line AB, and the corner at B which was in dispute

June 21, 1895.

Frank H. Genet, Co. Surveyor,  
Holmes Co. Ohio.

R. Tp. D<sup>o</sup> Lot  
6 9 sec 6 S 1/4 16

No. 151.



Notes.

"A," the northeast corner of Lot 1, First quarter township of Twp. 9, R. 6, a post in the public road, on the line between Ranges 5 and 6.

"C," a stone on said Range line, the southwest corner of the southwest Quarter of Section 6, Twp. 9, R. 5, South 3 1/2° West 164 1/2 p 9 l from A and 2 p 21 links from B.

"B," a stone we established on said range line, at the southeast corner of Lot 16, 1/4 Twp. 9, R. 6, from stump of the Original White Oak, N 3 1/2° W 2 p 14 l from C and S 3 1/2° W 16 1/2 perches from A.

Original corner stone at NW said Lot 16, found about 3 feet west of corner placed by H. H. Robinson in 1890.

Surveyed for J. & W. Boyd, Christian T. Miller, et al, to determine the line ABC and to locate the original corner at B, June 20, 1895.

Frank H. Genet, Co. Surveyor.