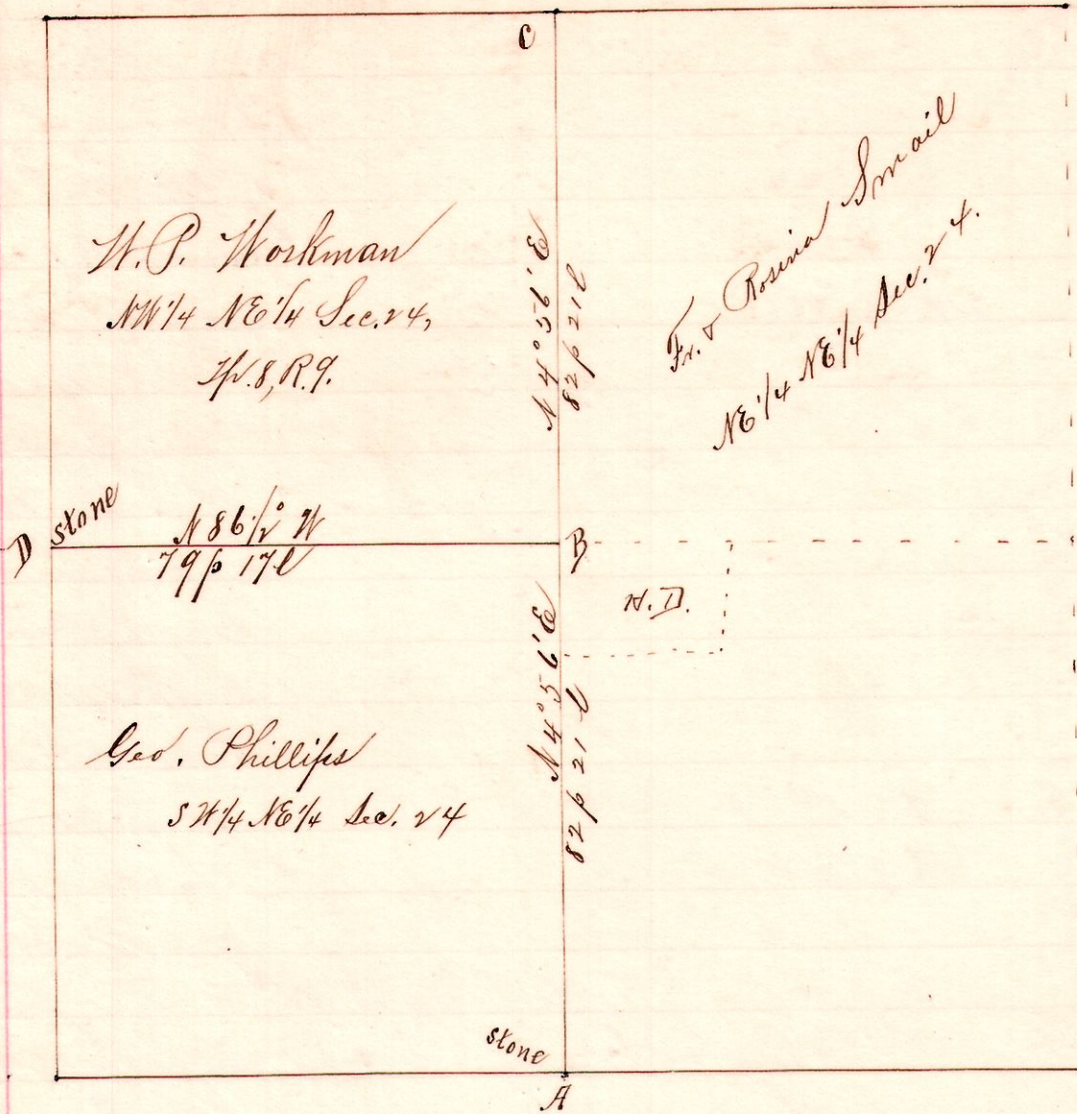


R. Tp. Sec. 24, R. 9
9 8 24 16 1/4

No. 148.



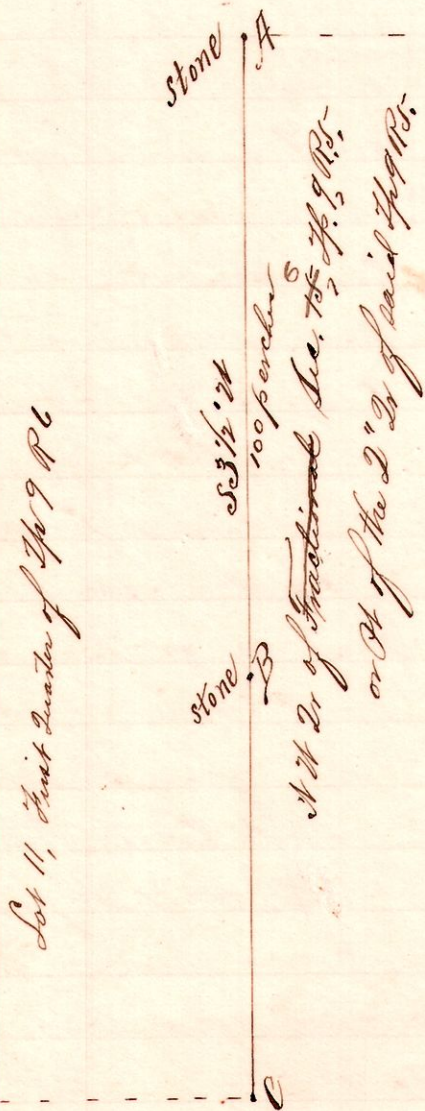
Notes
 "A," stone at south half quarter corner of the northeast quarter of Section 24, T. 8, R. 9.
 "C," the north quarter corner of said Sec.
 "B," a stone corner we established half of the distance AC N 4° 56' East 82 p 21 l from A
 "D," a stone at the northwest corner of southwest quarter of the NE 1/4 Sec. 24, T. 8, R. 9, 186 1/2° W 79 p 17 l from B

Surveyed for W.P. Workman, Geo. Phillips, et al, under notice of legal survey given May 24, 1895; Surveyed to determine the line B-D on June 18, 1895.

Frank H. Gent, Co. Surveyor,
Holmes Co. Ohio.

R. Tp. Sec. 24
5 9 6 24
6 96 11 14

No. 149.



Notes.
 "A," is a stone in the public Road, on the line between Ranges 5 and 6, T. 9, at the southwest corner of Sec. 5, and the NW corner of the Northwest Quarter of Sec. 6, T. 9, R. 5.
 "B," a stone on said Range line 100 perches S 3 1/2° W from A.
 "C," is the northeast corner of Lot No. 16, of the First Quarter township of T. 9, R. 6.

Chairman:

Samuel Hoover & Geo. W. Luke,

Surveyed for the Trustees of Berlin Tp., William Drushel, Christian T. Miller, et al, to determine the line of a county road running along said Range line from A to C, by order of said trustees

June 20, 1895.

Frank H. Gent, Co. Surveyor,