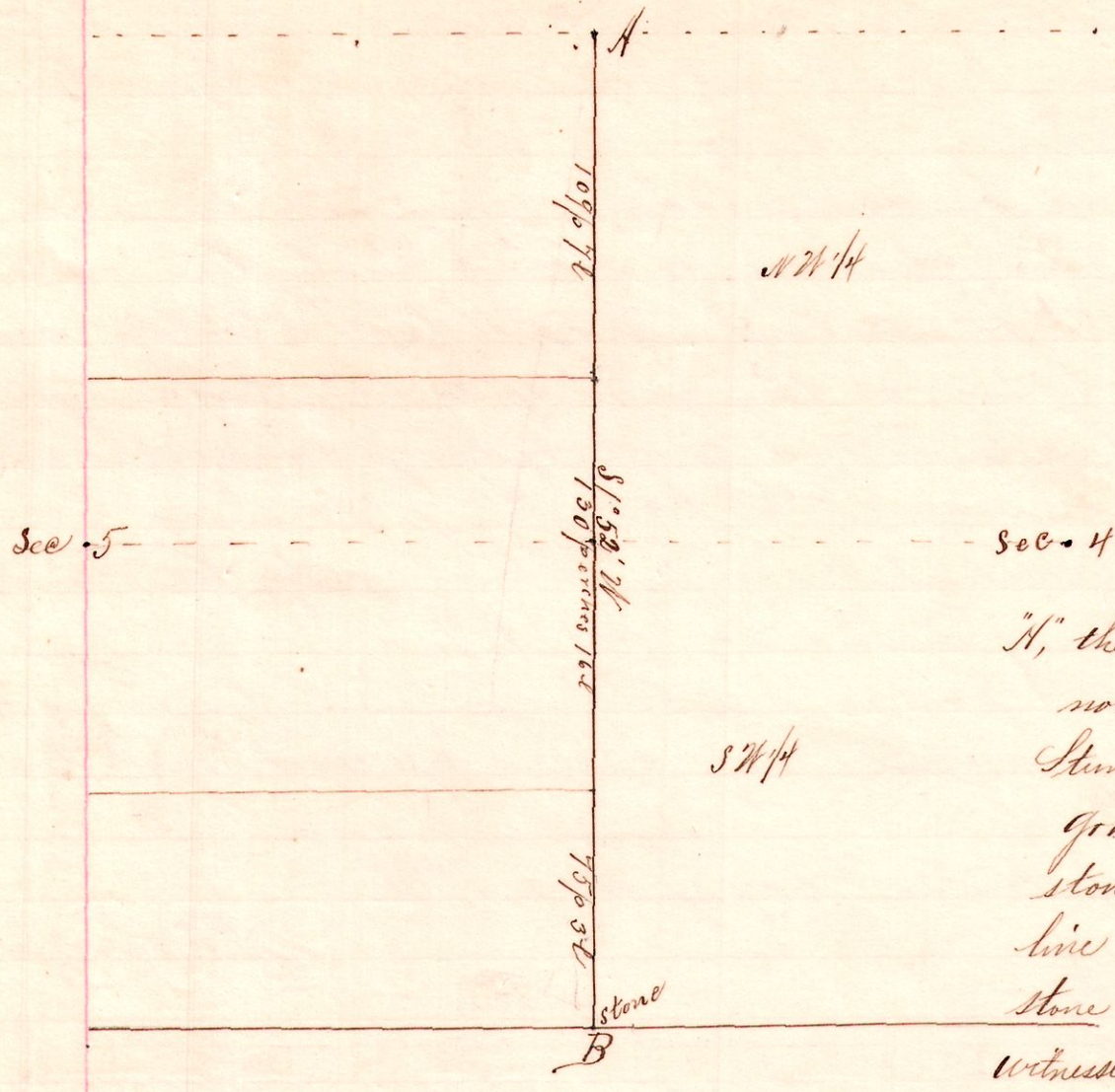


R 7p sec
15-19 4 and 5 line

No. 145



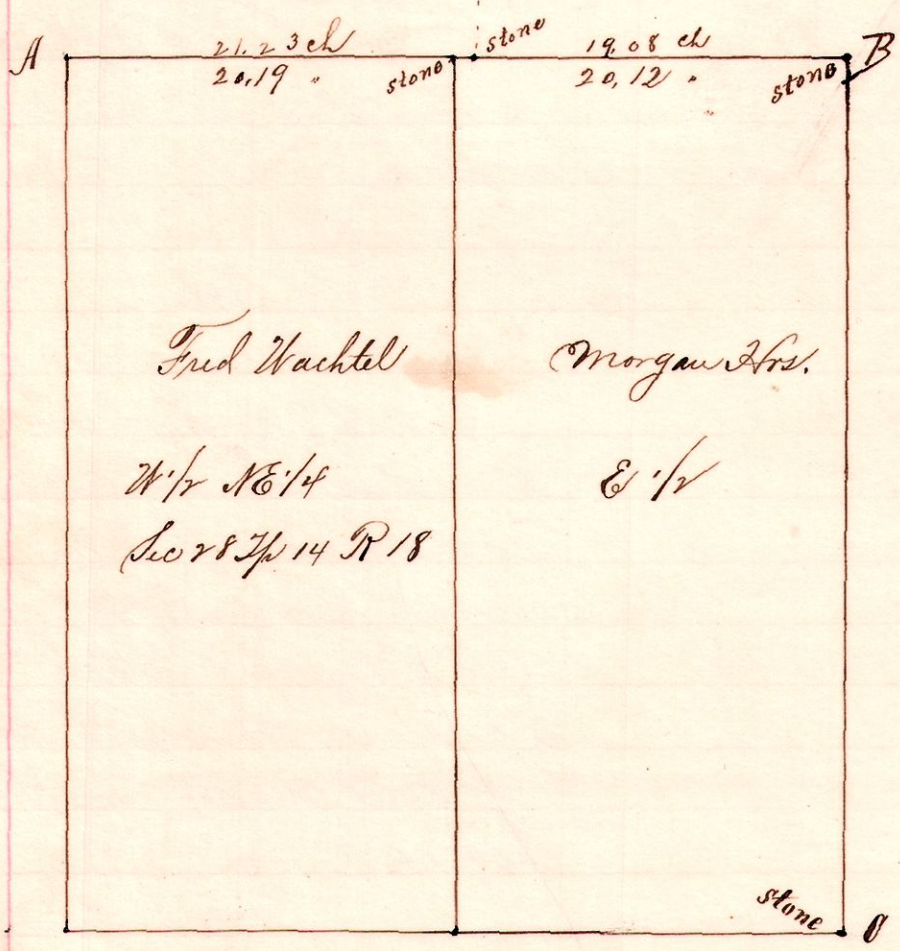
Notes
"A", the northwest corner of Sec. 4 and the northeast corner of Sec. 5, T. 19 R. 15, Stump of Original Walnut 1.5811251 yard, from which established a stone corner, and traced the section line with a bearing S 153° 21' W to a stone at B on south line took as witness to B the following:
B Walnut 6.553 21 8 1/2
N. Ash 16.153 21 34 1/2

Surveyed for Peter Young, William Spreng, Henry Huffman, et al,
June 4 " 1895.

Frank H. Gent,
County Surveyor.

R 7p Sec 2
14 18 28 16

No. 146.



Notes.
"A" stone in the County line Road was established from stump of Original Hickory and the Elm 26 s 67° E 33, decaying.
"B", a stone at the northeast corner Northeast quarter of Section 28 T. 14 R. 18.
"C", a stone in the public road at the southeast corner said quarter S 1° 30' W 167 1/2 yd from B.
"A" is the northwest corner of said quarter.

Chairman:
Fred Wachtel & David Brown,
Chas M. Dowell, master

Surveyed for Thomas Fitzgerald, Fred Wachtel, Morgan Mrs and others to locate "A", the northwest corner NE 1/4 Sec 28 T. 14 R. 18
June 12 " 1895.

Frank H. Gent,
County Surveyor,
Holmes Co.,
Ohio.