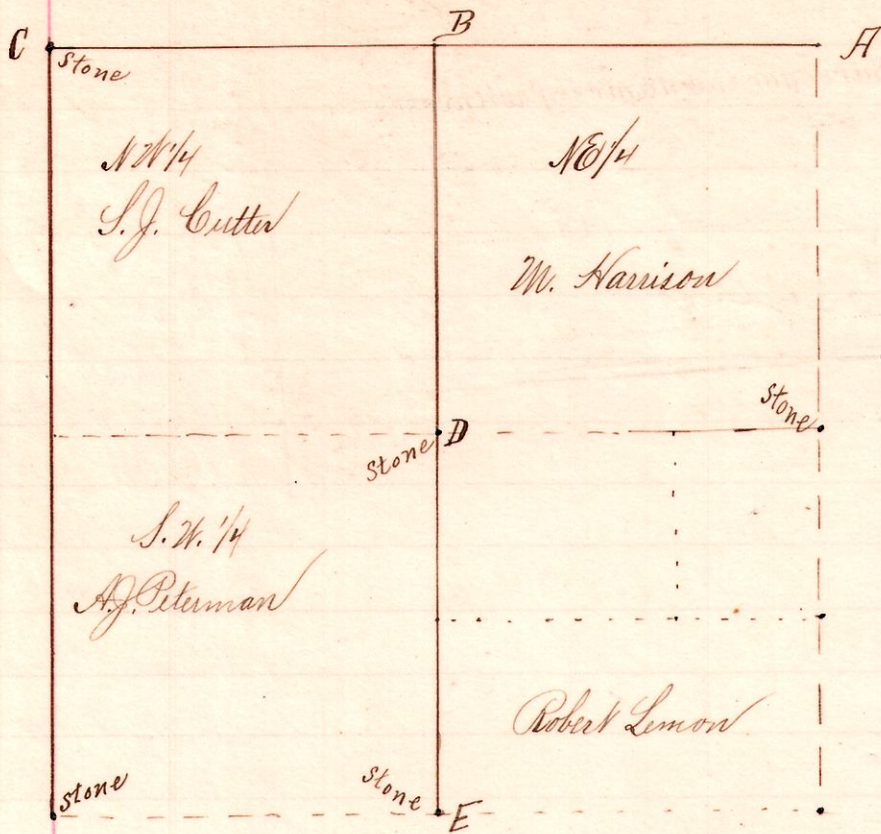


No. 138.

1384 26 N/4



Notes

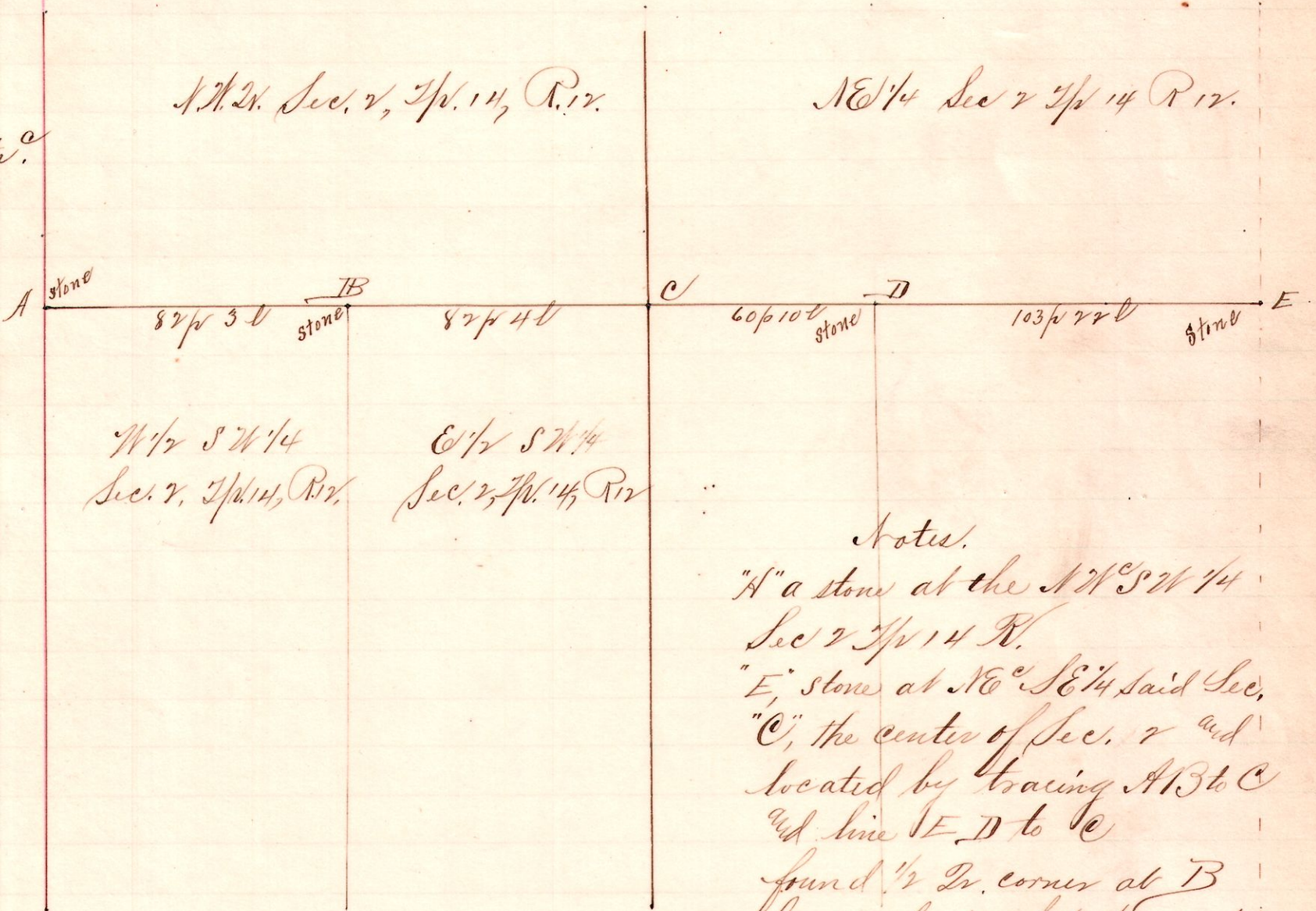
"A," is the northeast corner of the Northeast quarter of Sec 26 T¹⁴ R¹³ where still exists stump of original B. Oak's N30 W 30 links from thence ran west to C, the northwest corner of said section 26; at C found corner well marked, with stone, and original Section 4 N43 E 23. Traced the line ED, bisecting AC at B, on line between Holmes and Wayne Counties. Planted a large migger head at B for the corner.

Surveyed the above for Samuel J. Cutter, Margaret Harrison, et al. to establish the north quarter corner of Section 26, T¹⁴, Range 13, April 5th 1895.

Frank H. Genet,
Co. Surveyor.

No. 139.

1214 2 Center.



Notes.

"A" a stone at the NW¹/₄ SW¹/₄ Sec 7 T¹⁴ R¹².
 "E," stone at NE¹/₄ SE¹/₄ said Sec.
 "C," the center of Sec. 7 and located by tracing AB to C and line ED to C found 1/2 Dr. corner at B buried about 4 feet; placed stone over old one; placed stone at C.

Surveyed for Geo. Meir, Geo. Mills and J. Robnett and others, March 27th April 10th 1895.

Frank H. Genet,
Co. Surveyor.