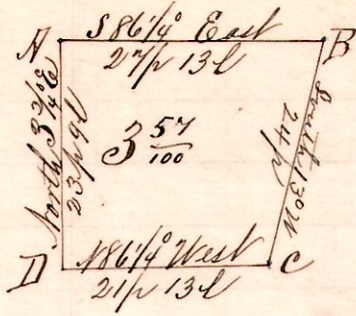


No. 133.

5 10 4th 16 NK



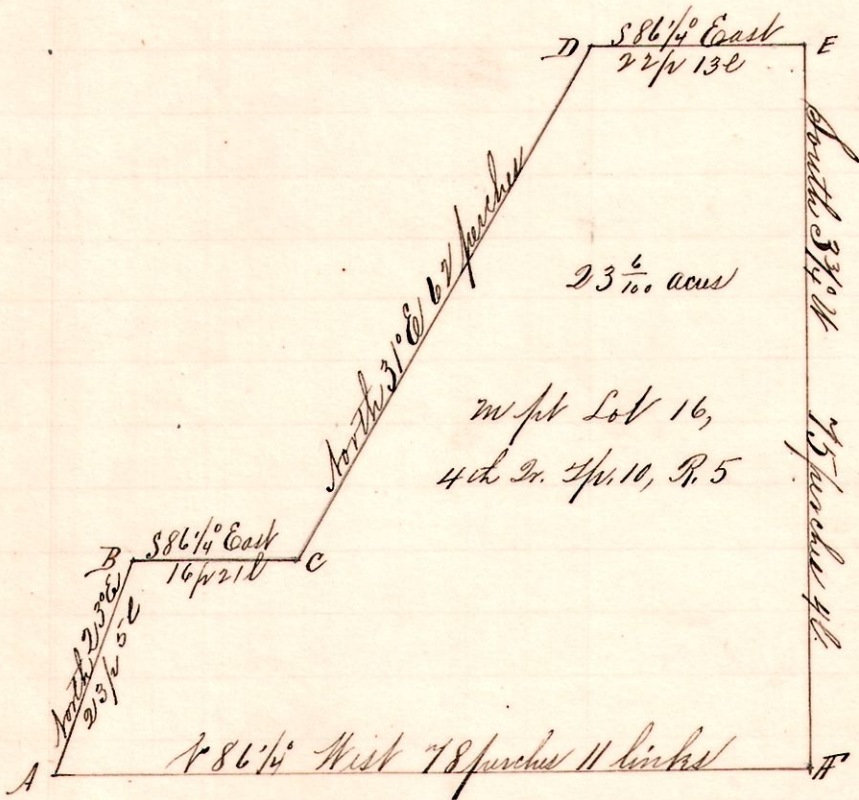
Note.  
 "A", a post 24 p 1/2 S 86 1/4° East from the northwest corner of the Lot 16, 4th St. 7p 10 P. 5.  
 "B", a post on north line said Lot 16, South 86 1/4° East 27 perches 13 l from A.  
 "C", a post S 13° W 24 perches from B.  
 "D", a post N 86 1/4° West 21 1/2 p 13 l from C, and South 3 3/4° E 23 p 9 l to A.

Surveyed for Peter Selzer, John Feibert Heirs, and others,  
 March 29th, 1895.

Frank H. Genet, Co. Surveyor.

No. 134.

5 10 4th 16 m



Note.  
 "A", post on the south line of Lot 16, 4th St. 7p, 10 P. 5, S 86 1/4° East 35 perches from the southwest corner.  
 "B", a post North 31° E 62 perches from A.  
 "C", " " S 86 1/4° East 16 p 21 l " B.  
 "D", " " North 31° E 62 perches " C.  
 "E", a post S 86 1/4° East 22 p 13 l " D.  
 "F", " " South 3 3/4° W 75 p 4 l E, and N 86 1/4° West 78 p 11 l to A.

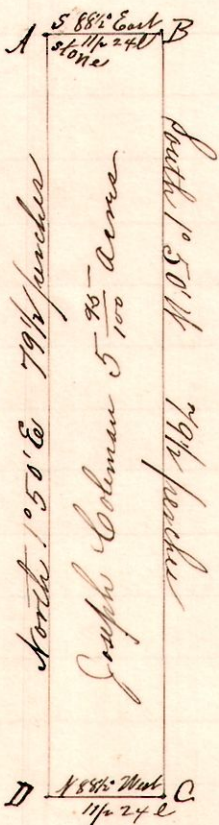
Surveyed for Peter Selzer and Heirs of John Feibert, deceased,  
 March 29th, 1895.

Chamman:  
 Henry Engle  
 Char. Gunnwall

Frank H. Genet,  
 Co. Surveyor.

R 7p Sec 26  
13 14 26 SE N 1/2

No. 135.



Note  
 "A", stone at the center of Section 26, the northwest corner of the north half of the southeast quarter Sec 26 7p 14, P. 5.  
 "B", a stone on the north line of said quarter section S 88° East 11 1/2 p 24 l from A.  
 "C", a stone on the south line said half quarter section South 1° 50' W 79 1/2 perches from B.  
 "D", a stone on the west line, the southwest corner of said north half quarter S 88° West 11 perches 24 links from C and North 1° 50' East 79 1/2 perches to A.

Commissioners:  
 John Wiedler, John M. Clelland, Louis Parrot.  
 David Smail & Harry Coleman, appraiser & master.

A Survey of Joseph Coleman's portion of the estate of John Coleman, as partitioned amicably, by the above named Commissioners  
 April 4th 1895.

Frank H. Genet,  
 County Surveyor.