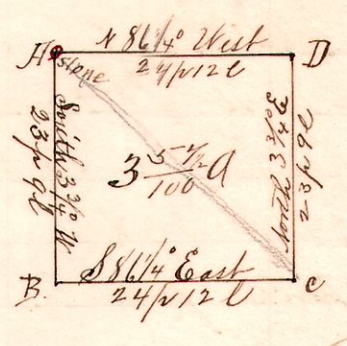


R 7th Dr 1/2 Lot 16
5 10 4th 16 NW

No. 130.



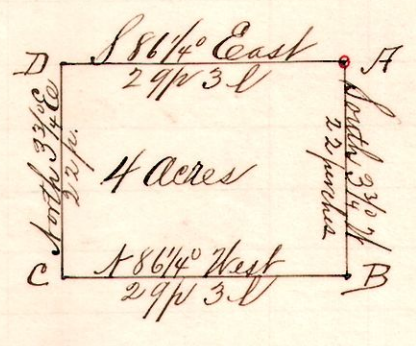
Notes.
 "A," stone at the northwest corner Lot 16, 4th Dr. 7th 10, P.S.
 "B," a post on the west line, said Lot South 3 3/4 W 23 p 9 l from A.
 "C," a post S 86 1/4 East 24 perches 12 links from B.
 "D," a post on the north line of said Lot, North 3 3/4 E 23 p 9 l from C, and N 86 1/4 West 24 p 12 l to A.

Surveyed for Peter Selzer, Adam and Chas. A. Feibert, et al
 March 29th 1895.

Frank H. Genet,
 Co. Surveyor.

5 10 4th 16 NW

No. 131.



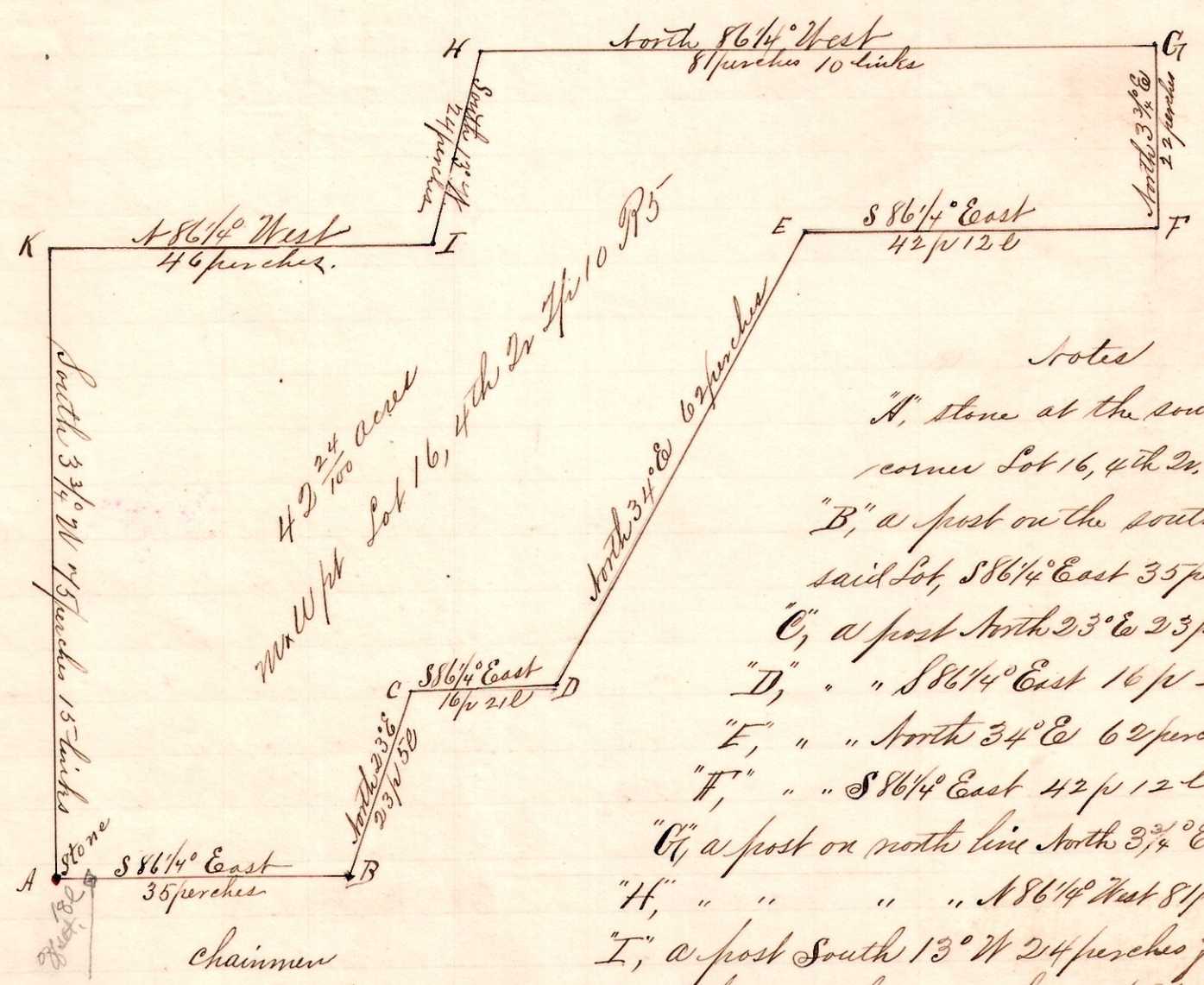
Notes
 "A," stone at the northeast corner Lot 16, 4th Dr. 7th 10, P.S.
 "B," a post on the east line of said Lot South 3 3/4 W 22 p from A.
 "C," a post N 86 1/4 West 29 perches 3 links from B.
 "D," a post on the north line said Lot, North 3 3/4 E 22 perches from C, and S 86 1/4 East 29 p 3 l to A.

Surveyed for Charles A. and Adam Feibert, Adms. Jno. Feibert, et al
 March 29th 1895.

Frank H. Genet,
 Co. Surveyor.

5 10 4th 16 NW

No. 132



Notes
 "A," stone at the southwest corner Lot 16, 4th Dr. 7th 10, P.S.
 "B," a post on the south line of said Lot, S 86 1/4 East 35 perches from A.
 "C," a post North 23 3/4 E 23 p 5 l " B.
 "D," " " S 86 1/4 East 16 p 2 l " C
 "E," " " North 34 E 62 perches " D.
 "F," " " S 86 1/4 East 42 p 12 l " E.
 "G," a post on north line North 3 3/4 E 22 p from F.
 "H," " " " " N 86 1/4 West 81 p 10 l " G.
 "I," a post South 13 W 24 perches from H.
 "K," a post on the west line, N 86 1/4 West 46 perches from I, and South 3 3/4 W 73 p 15 l to A.

Surveyed for Peter Selzer and Heirs of John Feibert, et al
 March 29th 1895.

Frank H. Genet,
 Co. Surveyor.

H. H. Hunt