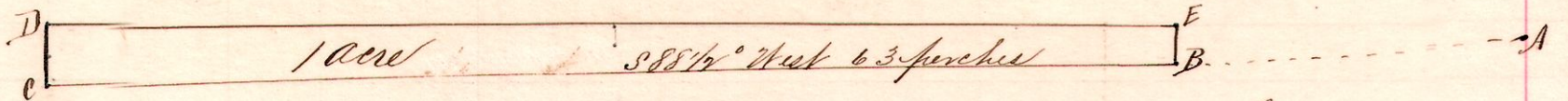


13 13 14 N6 m



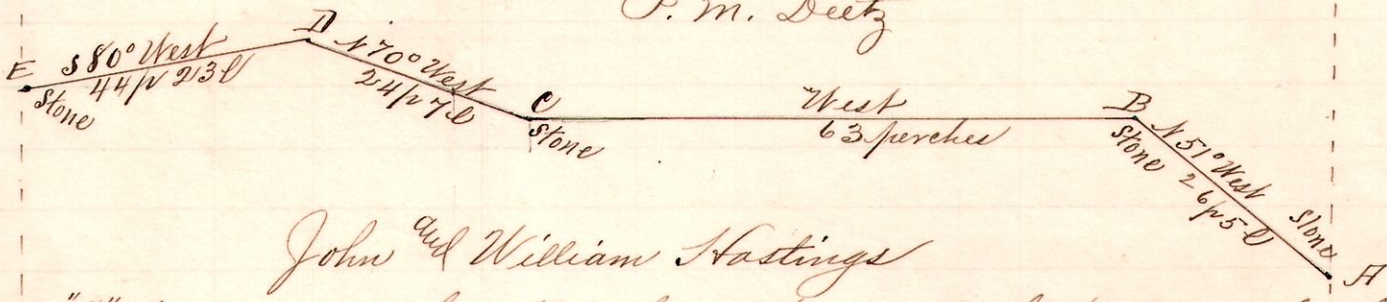
"A," stone on the east line N6 2r Sec 12 Tp 13 R 13 South 1 1/2° W 78 p 21 l from the N6°  
 "B," the place of beginning, a stone at north side road S88 1/2° West 24 perches from A.  
 "C," a stone S88 1/2° West 63 perches from B.  
 "D," a stone 3 1/5 perches north from C.  
 "E," a stone 2 perches north of B and 63 perches east from D

Surveyed for P.M. Deetz, John and William Hastings.  
 March 26, 1895.

Frank H. Genet, Co. Surveyor.

13 13 12 N6

P. M. Deetz



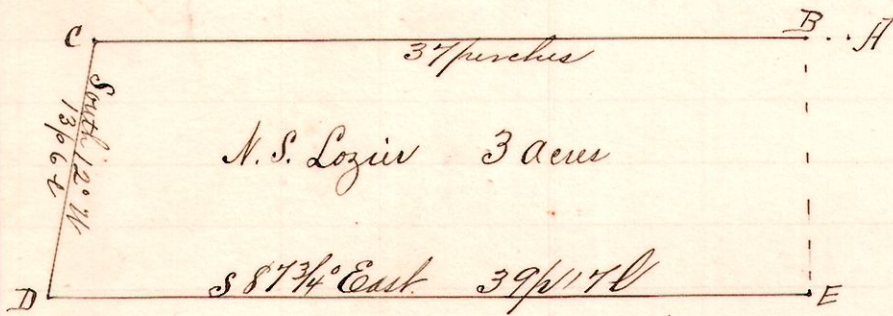
John and William Hastings

"A," stone on east line N6 2r Sec 12 Tp 13 R 13 South 1 1/2° W 94 p 21 l from N6°  
 "B," a stone at roadside N51° West 26 p 5 l from A.  
 "C," a stone 63 perches west from B.  
 "D," a post N70° West 24 perch 7 links from C  
 "E" a stone on the west line said quarter S80° West 44 p 23 l from D.

A survey of the line between the north part and the south part of the N6 2r Sec 12 Tp 13 and R 13, as changed by mutual agreement of P.M. Deetz, John and Wm Hastings, March 26, 1895.

Frank H. Genet, Co. Surveyor.

15 19 9 S6 N6



N. S. Lozier 3 acres

Notes

"A," the northeast corner of the southeast quarter Section 9 Tp. 19, R. 15.  
 B, 57 l west from A.

"C," post on north line the northwest corner, in the road 37 p west of B

"D," a post at the southwest corner said 3 acre tract, South 12° W 13 perches 6 links from C.

"E," a post at the southeast corner S87 3/4° East 39 p 17 l from D.

Chairmen:  
 N. J. Haudenschield.  
 W. S. Lozier.  
 Others Present:  
 Geo. Haudenschield  
 Ed Jeffries, Rev. Henry.

Surveyed for N. S. Lozier, Geo. W. Haudenschield, et al,  
 March 28, 1895.

Frank H. Genet,  
 Co. Surveyor,  
 Adams Co., Ill.