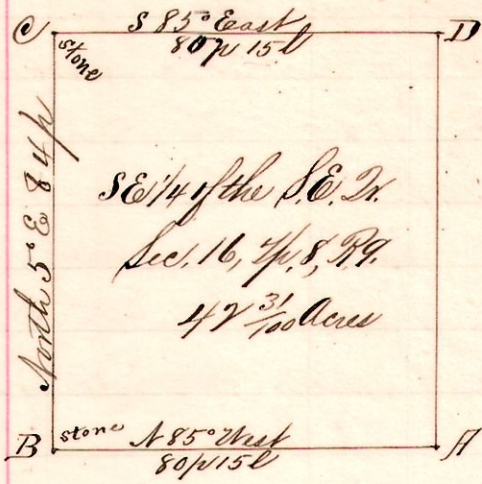


R<sup>1/2</sup> W<sup>1/2</sup> Sec 24  
 9 8 16 SE SE

No. 116.



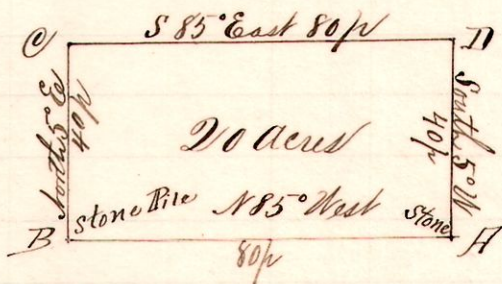
Notes.

- "A," a post at the S.E. S.E. 1/4 Sec. 16, T. 8, R. 9.
- "B," a stone on the south line of said Quarter N 85° West 80 perches 15 links from A.
- "C," a stone North 5° E 84 perches " B.
- "D," a post on the east line said Quarter S 85° East 80 p 15 l from C and South 84 perches to A.

R. G. Simmons, Lyman Remington, Frank H. Genet, appraisers  
 Surveyed and appraised by order of the Common Pleas Court, Feb 7, 1895.  
 Frank H. Genet Co. Surveyor.

No. 117.

9 8 16 SE SW



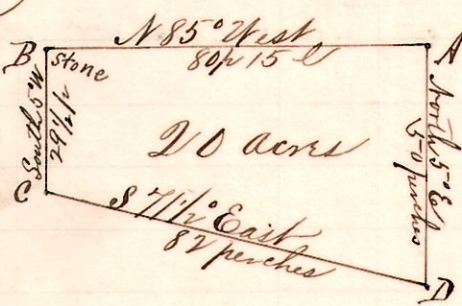
Notes

- "A," stone at the S.E. 1/4 S.E. Quarter Sec. 16, T. 8, R. 9.
- "B," stone pile at the southwest corner said Quarter 80 perches N 85° West from A.
- "C," a post on west line said Quarter Sec North 5° E 40 perches from B.
- "D," a post S 85° East 80 p from C and to A 40 p. South 5° W.

Surveyed by order of the Common Pleas Court, March 2, 1895.  
 Frank H. Genet, Co. Surveyor.

No. 118.

9 8 25 NE NE



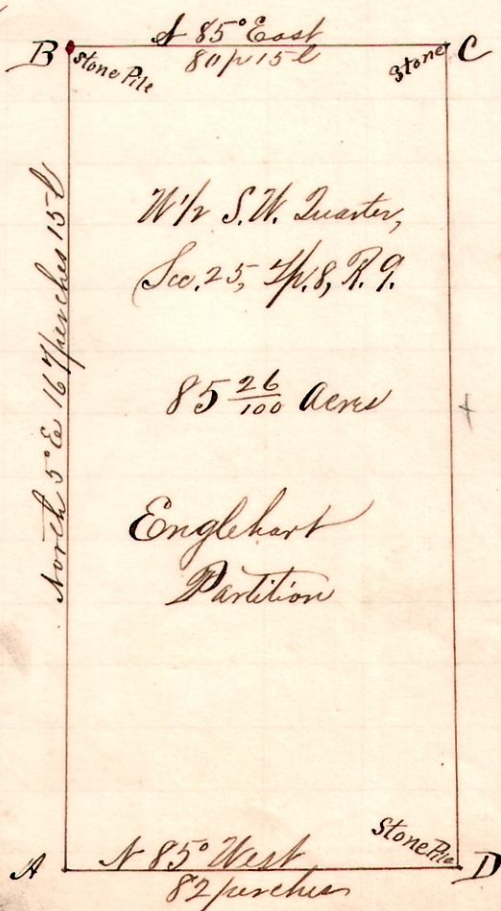
Notes

- "A," the northeast corner of the Northeast Quarter Sec. 25, T. 8, R. 9.
- "B," a stone on north line N 85° West 80 p 15 l from A.
- "C," a post S 5° W 29 1/2 perches from B.
- "D," a post on the east line of said Quarter S 7 1/2° East 82 perches from C, and North 5° E 50 perches to A.

Surveyed and appraised by order of the Court of Common Pleas, Feb. 2, 1895.  
 Frank H. Genet, Co. Surveyor.

No. 119.

9 8 17 SW NW



Notes

- "A," the southwest corner of the Southwest Quarter of Section 17, T. 8, R. 9.
- "B," a stone pile at the northwest corner of said Quarter North 5° E 167 perches 15 links from A.
- "C," stone at A's 1/2 Dr post S 85° East 80 p 15 l " B.
- "D," the south half quarter post of said quarter a stone pile South 5° W 168 perches from C and N 85° West 82 perches to A.

Surveyed and appraised by order of the Court of Common Pleas, Holmes Co., March 2, 1895.

Frank H. Genet  
 County Surveyor.