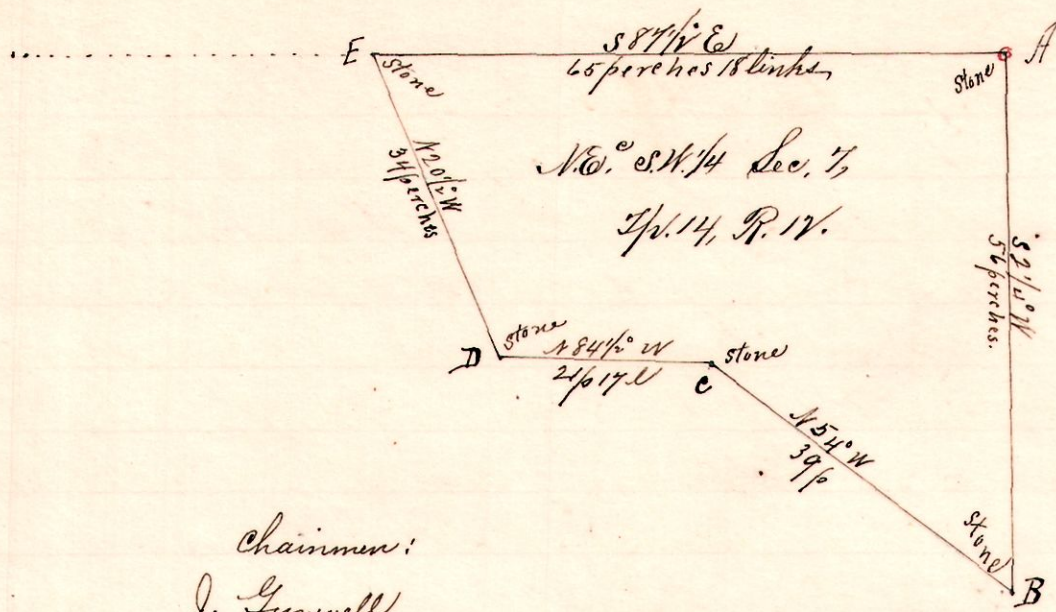


R 7/4 Sec 7 Q 14
12 14 7 SW 1/4

Nov. 98.



Notes.

"A", stone at the N.E. S.W. 1/4 Sec. 7, T. 14, R. 12.
 "B", a stone on east line of said Quarter S 2 1/2 W 5 1/2 p from A; took as a witness Apple 6 S 2 1/2 W 5 1/2 links.
 "C", stone N 54 W 39 p from B.
 "D", " N 84 1/2 W 21 p 17 W " C witnessed by Sugar 28 S 43 W 3
 "E" stone on north line of N 20 1/2 W 34 p from D and S 87 1/2 E 65 p 18 W to A.

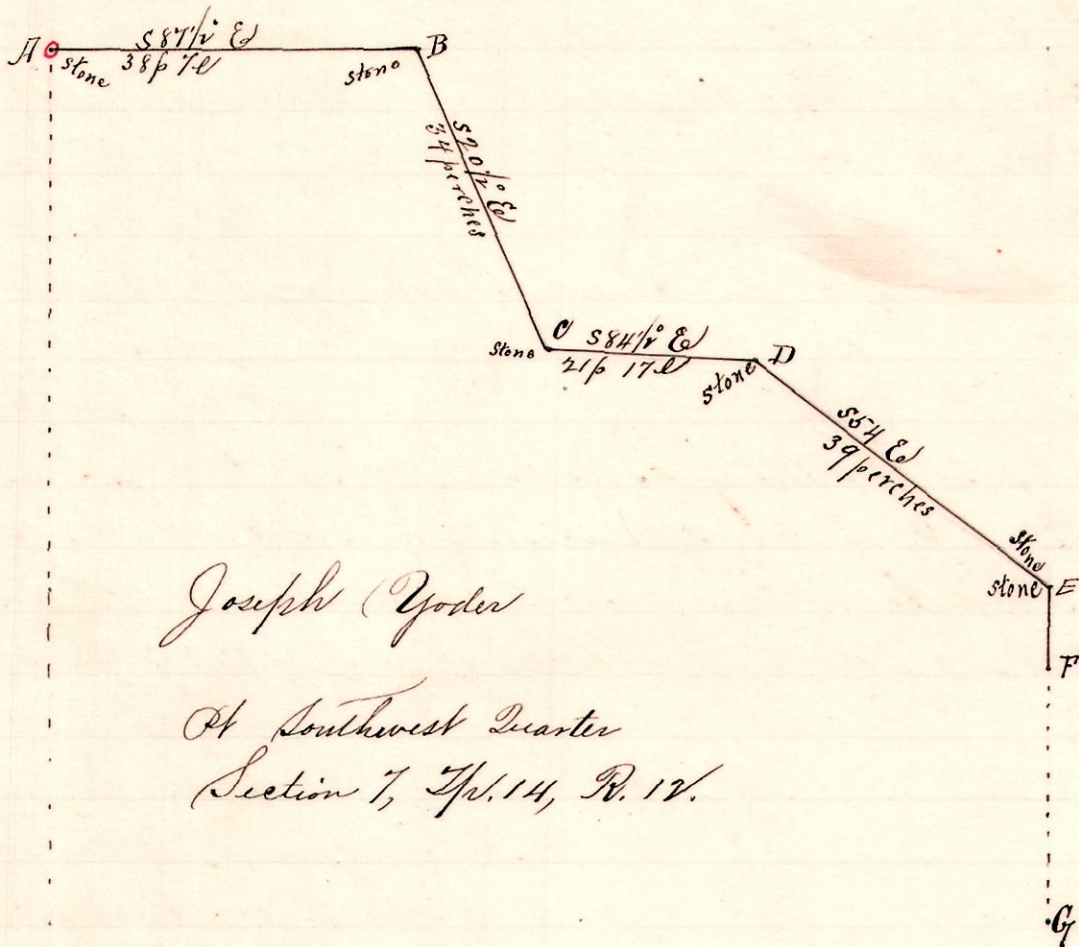
Chairmen:
 J. Gunwell,
 Ed Gunt.
 Oliver Carpenter, marker.

Surveyed for Samuel N. New, Joseph and A. Yoder, et al,
 Nov. 1, 1894.

Frank H. Gunt,
 County Surveyor.

12 14 7 SW

Nov. 99



Joseph Yoder

At Southwest Quarter
 Section 7, T. 14, R. 12.

Notes

"A", a stone the line between Ranges 12 and 13, at the southwest corner of the southwest quarter of Sec 7, T. 14, R. 12.
 "B", a stone on the north line of said Quarter S 87 1/2 E 38 p 70 from A.
 "C", a stone S 20 1/2 E 34 p from B
 "D", a stone S 84 1/2 E 21 p 17 W from C
 "E", a stone on the east line of said Quarter S 85 1/2 E 39 p from D
 "F", a post on said East line S 2 1/2 W 8 p 20 W from E
 "G", a stone on said East line 2 1/2 W 26 p " F.

Surveyed for Joseph Yoder, Abraham Yoder, Sam. N. New, et al,
 Nov. 1, 1894.

Frank H. Gunt,
 County Surveyor.