

No. 97.

To Joseph Yoder and A. Yoder:

You are hereby notified that a survey will be made and testimony taken by the County Surveyor of Holmes County, Ohio, on the 30th day of Oct. 1894, between the hours of 8 a.m. and 5 P.M., and to continue from time to time at the request of said County Surveyor, until the lines, boundaries and corners of the following described tract of land, now owned and held by Samuel N. Kerr et al and situate in Salterick Township, Holmes County, Ohio, can be established:

Being Section 7, T^p. 14, R¹².

Interested parties are hereby notified to give said Surveyor the names of parties they wish subpoenaed and to be present at said survey.

Signed this 9th day of Oct. 1894.

Samuel N. Kerr.

State of Ohio }
Holmes Co., ss }

Samuel N. Kerr, being first duly sworn states that on Oct. 9th 1894, and at least 20 days before Oct 30, 1894, served a copy of the above notice on A. Yoder, personally and on Joseph Yoder, by leaving at his residence.

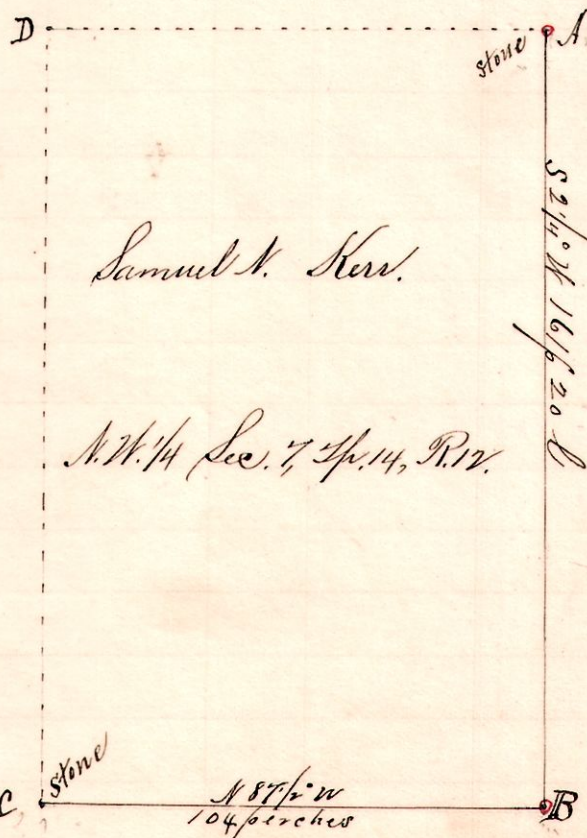
(signed) S. N. Kerr.

Sworn to and subscribed before me this 31st day of Oct. 1894.

Frank H. Genet,
County Surveyor.

Began survey by selecting, as chainmen and masters, J. L. Turvell, Ed Genet and Oliver Carpenter, commencing at North Quarter corner, running line through to south 2^d corner; then from West Quarter corner to east 1/4 corner, establishing the corner at center of said section 7 T^p. 14, R¹².

R¹² T^p Sec 7
14 14 7 N¹⁴



Notes.

"A" is a stone at North Quarter post of Sec 7 T^p. 14 R¹² Original ^{W oak} 20 S 54° W 13, good.

"B", planted a stone for corner of Southwest corner of Northwest quarter of said section 7, S 2 1/4 W 16 1/2 20 U from A.

"C", a stone at the southwest corner of the northwest quarter of said section 14, N 8 7/2 W 104 perches from B.

New witness to B

cherry 3 35° W 2 1/2 links,

CD is along the line between

Ranges 12 and 13, T^p. 14 and 13.

Surveyed for Samuel N. Kerr Joseph and A. Yoder, et al.

Oct 30, 31, 1894.

Frank H. Genet,
County Surveyor.