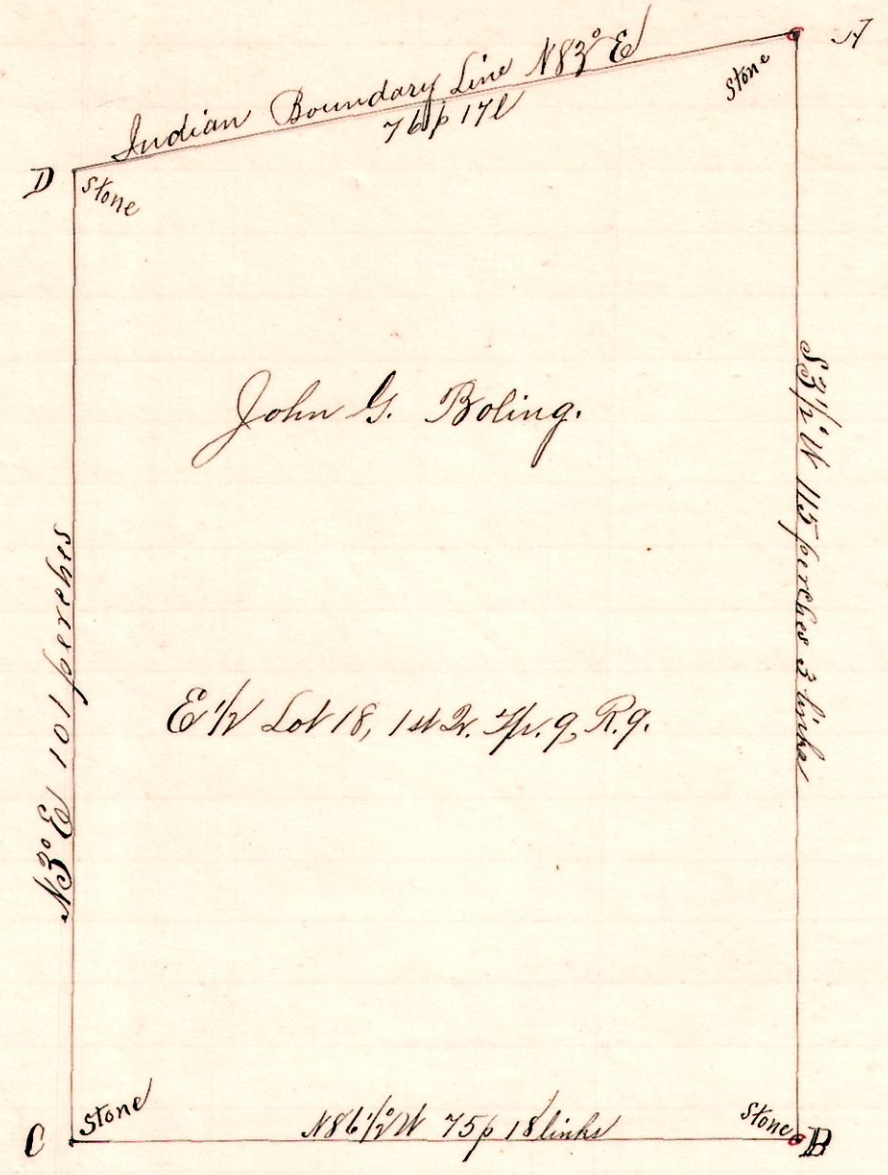


R 2p 1/4 Lot
9 9 1st 18 E 1/2

No. 79.



John G. Boling.

E 1/2 Lot 18, 1st 2p 9 R 9.

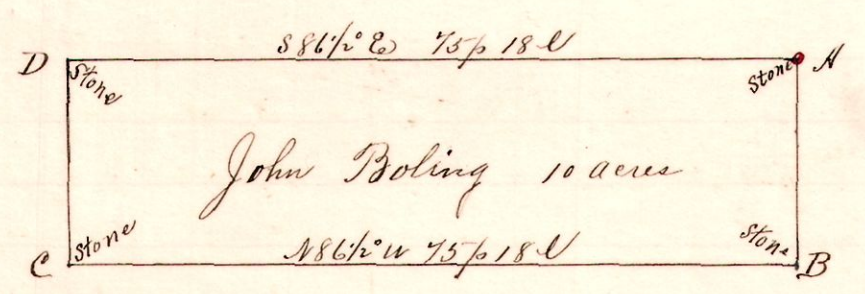
Notes
 "A," cut in large rock at the northeast corner of Lot No 18 1st 2p 9 of 2p 9 R 9. (Knox)
 "B," is a stone at the southeast corner of said Lot 18, S 3 1/2° W 115 perches 3 links from A
 "C," a stone we placed at the southwest corner of the E 1/2 of said Lot N 86 1/2° W 75 p 18 l from B, and witnessed by a stone on the south line S 86 1/2° W 6 p 10 l also by a chestnut N 60° E 3 links.
 "D," a stone we place on the north line, on the old Indian Boundary at the NW corner said E 1/2 Lot 18 N 83° E 101 p from C and N 83° E 76 p 17 l to A and witnessed by a stone S 83° W 6 1/2 perches and a W Walnut 83 25° W 30 links

Surveyed for John G. Boling, N. L. Curtis, Rosetta Burdette, et al Sept. 10, 1894.

Frank H. Gunt, Co. Surveyor.

9 9 1st 17 NW

No. 80.



John Boling 10 acres

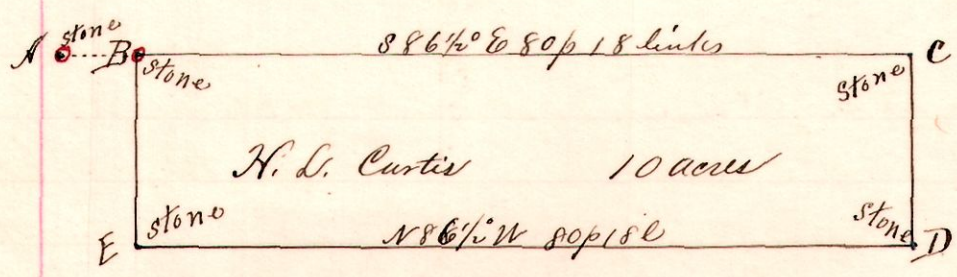
Notes
 "A," stone at NE Lot 17 1st 1/4 2p 9 R 9 (Knox)
 "B," " on E line S 3 1/2° W 21 p 5 l from A.
 "C," a stone N 86 1/2° W 75 p 18 l " B
 "D," a stone on north line N 3 1/2° E 21 p 5 l from C; and S 86 1/2° E 75 p 18 l to A.

Surveyed for John Boling, N. L. Curtis, H. D. Osborn, et al Sept 10, 1894.

Frank H. Gunt, Co. Surveyor.

9 9 1st 17 NW

No. 81.



H. L. Curtis 10 acres

Notes
 "A," stone at the SW Lot 18 1st 1/4 2p 9 R 9
 "B," a stone at NW Lot 17, 1st 1/4 2p 9 R 9 S 86 1/2° E from A 8 perches and witnessed by
 } White Oak 6 N 10° E 2 links }
 } " " 12 S 23° W 15 " }

"D," stone S 3 1/2° W 19 p 20 l from C
 "E," stone on west line N 86 1/2° W 80 p 18 l from D and N 3 1/2° E 19 p 20 l to C
 Surveyed for H. L. Curtis, H. D. Osborn, Jno. G. Boling et al Sept 10, 1894.

Frank H. Gunt, Co. Surveyor.