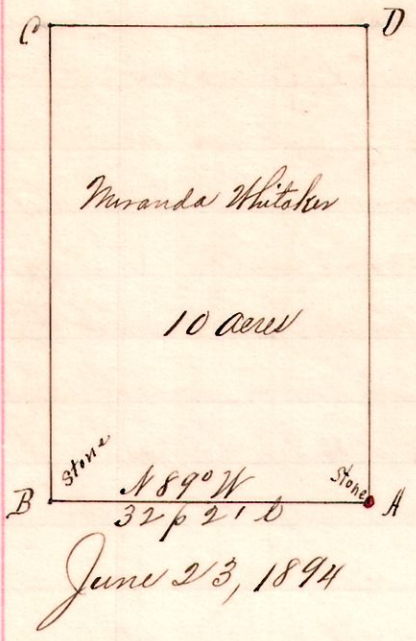


R. W. Sec. 2 & Pt
12 15 32 NW Sec

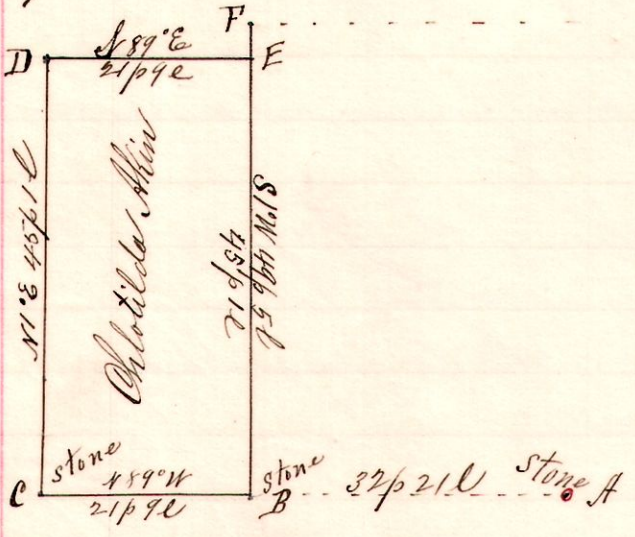
No. 73.



Notes,
 "A," stone at the southeast corner of the Northwest Quarter of Section 32 1/4 15 T. 12. (Salt Creek)
 "B," a stone on the south line of said quarter, the southeast corner of Chlotilda Ahin's land N 89° W 32 p 21 links from A.
 "C," a post at N 11° E 49 p 5 l from B
 "D," the N.E. is N 11° E 49 p 5 l " A.
 Surveyed for Miranda Whitaker and Chlotilda Ahin to determine B of the line B.C.
 Frank H. Gunt, Co. Surveyor.

No. 74.

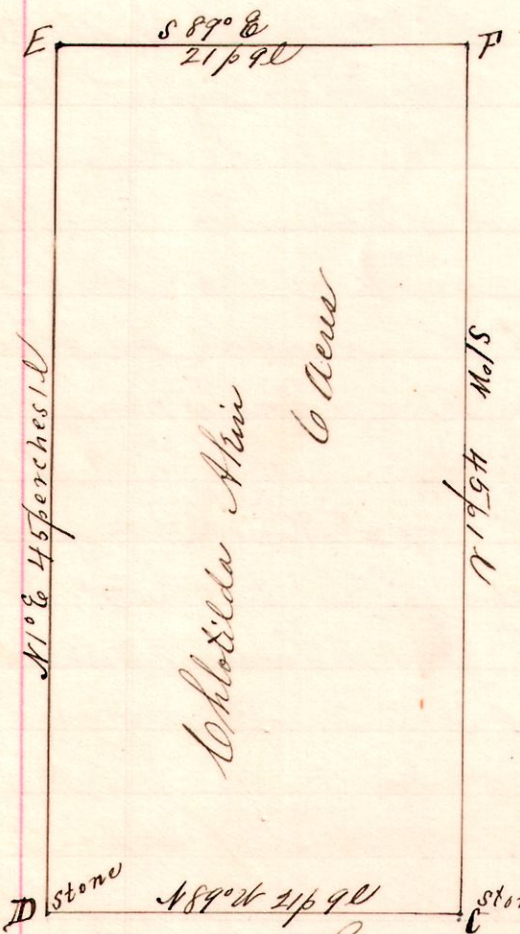
12 15 32 NW Sec



Chainmen { J. B. Leeper
William Crile

Notes.
 "A," stone at the S.E. N.W. Sec. 32, 1/4 15, R. 12.
 "B" the place of beginning is a stone in the public road, on the south line of said quarter N 89° W 32 p 21.0 from A.
 "C," a post in said road at South west corner tract N 89° W 21 p 9.0 from B
 "D," a post at N 11° E 45 p 1.0 from C
 "E," a post at northeast corner S 89° E 21 p 9.0 from D, and N 11° E 4 p 5 l to Miranda Whitaker N 11° E F
 Also S 1° W 45 p 1.0 to B.
 C.D is along a fence.
 Surveyed for Chlotilda Ahin and Nancy J. Crile, June 23, 1894.
 No. 75;
 Frank H. Gunt, Co. Surveyor.

12 15 32 NW Sec



Notes
 "C," the place of beginning is 54 p 5 l N 89° W of "A," a stone at the southeast corner of the NW Sec. 32 1/4 15 R. 12 also 21 p 9.0 west of S.E. tract deeded by N. J. Crile to Elan Crile.
 "D," the southwest corner is a stone on the south line of said quarter N 89° W 21 p 9.0 from C.
 "E," a post at N 11° E 45 p 1.0 from D.
 "F," the northeast corner, is a post S 89° E 21 p 9.0 from E, and S 1° W 45 p 1.0 to C.
 Planted stone in the road at D.
 Chainmen
 James B. Leeper,
 William Crile
 Russel Ahin, master.
 Surveyed for Chlotilda Ahin and Nancy J. Crile et al June 23, 1894, to determine D and the line D.E.
 Frank H. Gunt,
 County Surveyor.