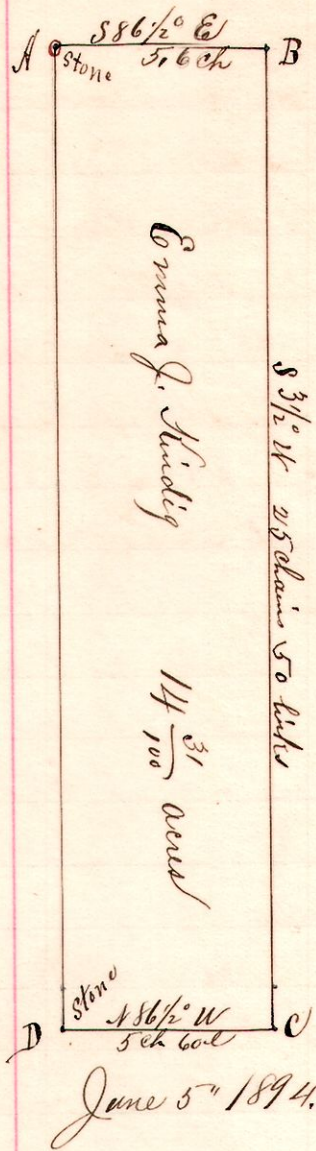


R 1/4 1/4 1/4 1/4  
8 9 10A 6 1/4

No. 70.



Notes  
 "A," stone at the northwest corner of lot 6  
 1st 1/4 1/4, 9, R. 6 - Established by measuring  
 the distance across lots 6 & 9 from a  
 stone at the northwest corner lot 6  
 then dividing the distance  
 "B," a post on the north line of said  
 lot 6, S 86 1/2° E 5.6 chains from A.  
 "C," a post on the south line of said  
 lot 6, S 3 1/2° W 25.5 chains and 50 C from B  
 "D," a stone at the southwest corner of  
 said lot 6, N 86 1/2° W 5 chains 60 links  
 from C; and N 3 1/2° E 25.5 chains to A.

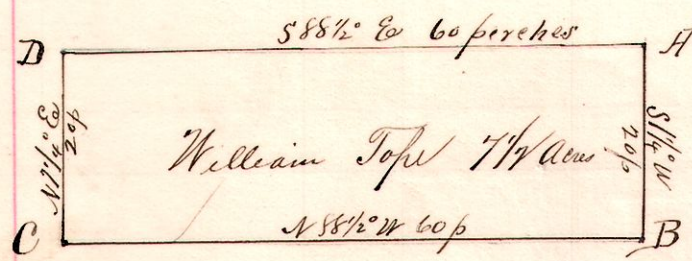
Chairmen:  
 Charles Cornell  
 Isaiah Hedrow

Surveyed for Emma J Kindig & Sol. Starnes May 31st

Frank H. Gent,  
 County Surveyor.

14 17 19 N 6 E

No. 71.



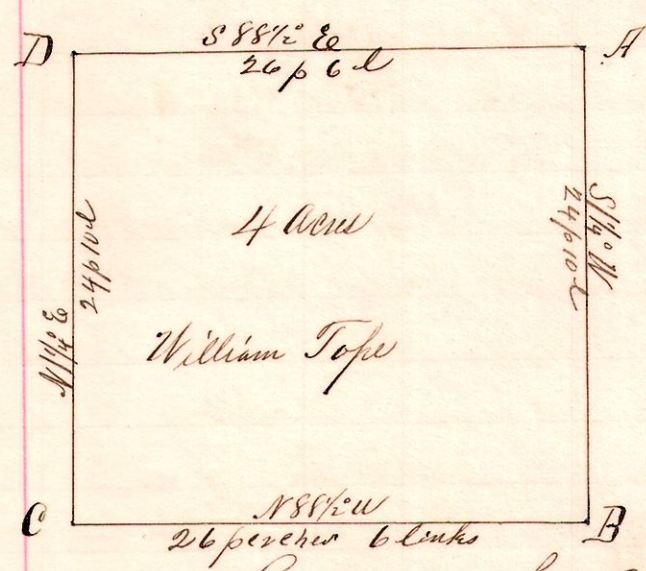
Notes  
 "A," is a post on the east line of the  
 northeast quarter of Sec 19 T. 17 R. 14  
 S 1 1/4° W 100 perches from the NE cor. Dr.  
 "B," a post on said line S 1 1/4° W 20 p from A  
 "C," a post N 88 1/2° W 60 p from B.  
 "D," " " N 1 1/4° E 20 p from C; and 60 p S 88 1/2° E to A.

Surveyed for William Tope, Mrs. Eliza Starnes and others  
 June 6, 1894.

Frank H. Gent,  
 Co. Surveyor.

14 17 19 N 6 E

No. 72.



Notes.  
 "A," a post on east line N. 6. Dr. Sec. 19, T. 17, R. 14,  
 S 1 1/4° W 120 perches from the northeast corner.  
 "B," a post on said line S 1 1/4° W 24 p 10 C from A.  
 "C," a post N 88 1/2° W 26 p 6 C from B.  
 "D," " " N 1 1/4° E 24 p 10 C from C, and  
 S 88 1/2° E 26 p 6 C to A.

Surveyed for William Tope and heirs of Elias Starnes, et al,  
 June 6, 1894.

Frank H. Gent  
 County Surveyor