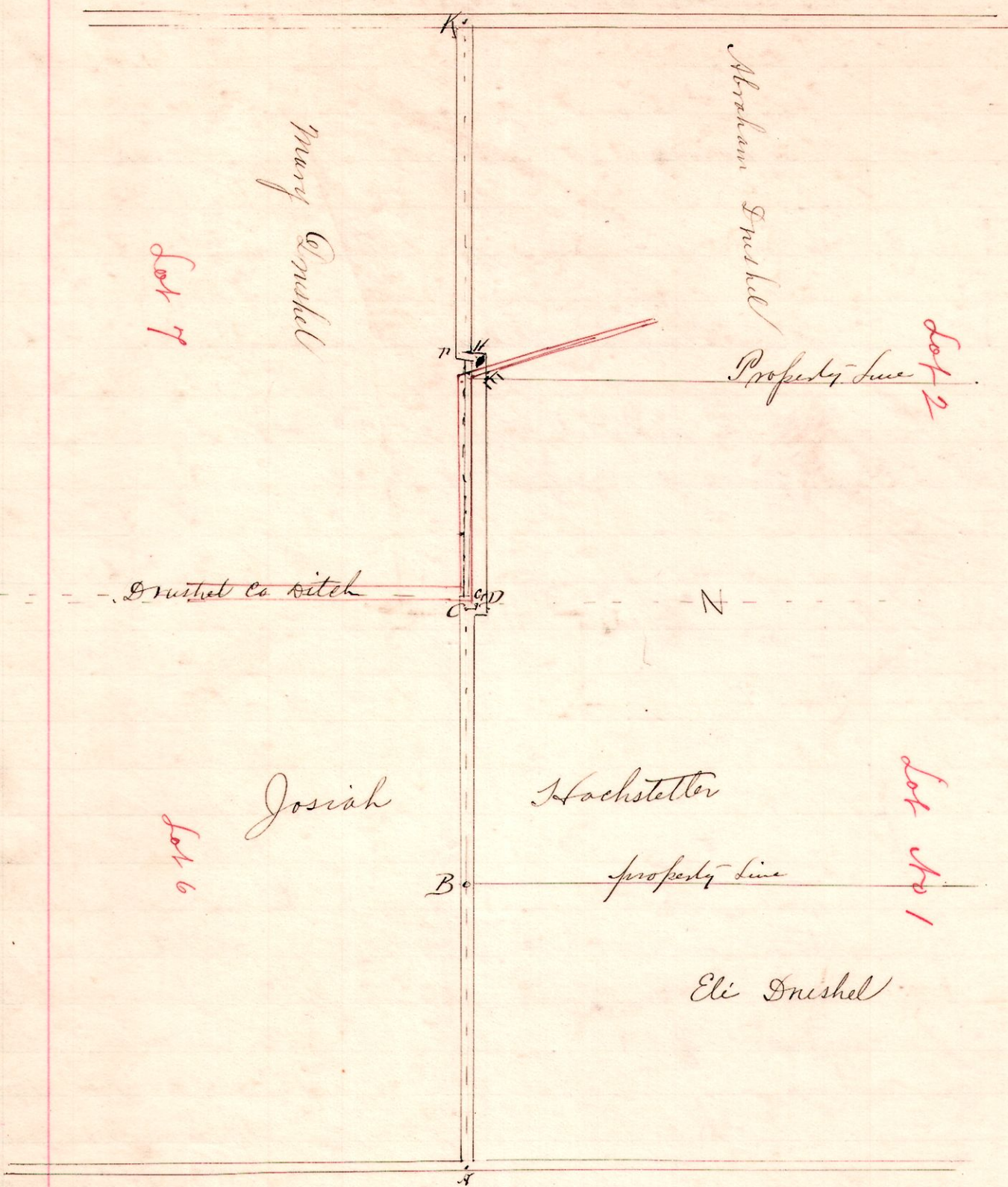


No. 66

CR 206

R 7th 14th Lot
6 9 14 6, 7



Notes

- "A", the place of beginning, is a stone at the southeast corner Lot 1, 14th Tp 9R6
- "B", a post at S²²° Eli Drushel's land N86¹/₄°W 82 perches from A.
- "C", a post on line between Lots 1st & 6, 79 perches from B.
- "D", a post N4°W 35 links from C
- "E", " " on west line Lot 1 N86¹/₄°W 1 perch from D.
- "F", " " " " bank Drushel County Ditch, and on the line between lands of Josiah Hochstetter & Abraham Drushel N86¹/₄°W 57 p from G
- "G", a post on west bank said Ditch N86¹/₄°W 6 p from E.
- "H", a post on line between Lots 2nd & 7 S4°W 35 links " H.
- "K", the termination of proposed route, the corner for Lots 2, 3, 7 & 8, a post in new road N86¹/₄°W 93 p 19 links from F.

Viewers
John Chevalard
S. J. Cutter
L. M. Bilderbach

Chairmen
Calvin Seetz
Henry Reidenbach

Edward Genet, Marker.

Surveyed by order of County Commissioners Holmes Co. O.
June 12, 1894

Frank H. Genet
County Surveyor.