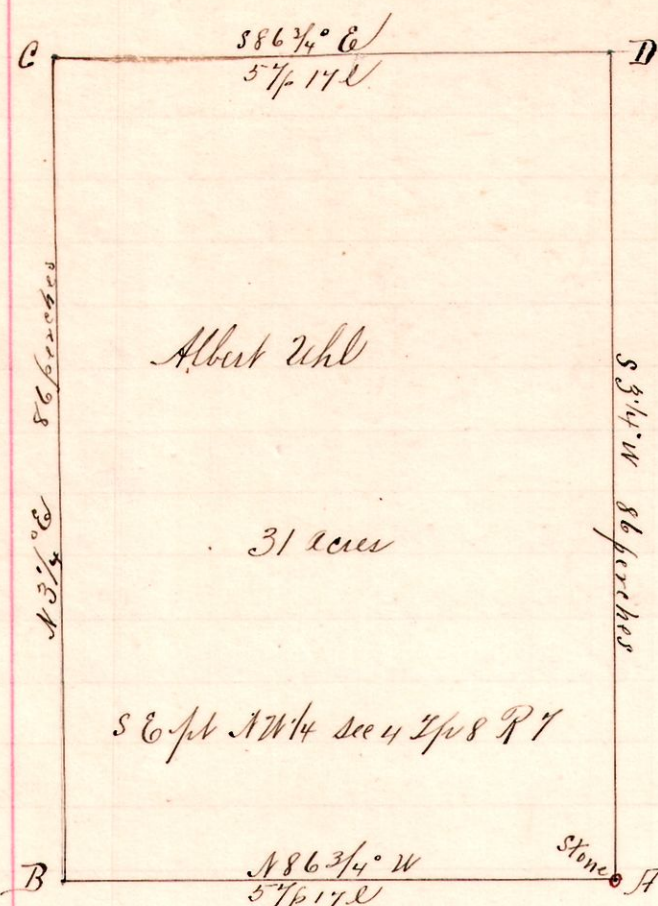


R 7 Sec 2 & 3  
7 8 4 NW SE

No. 53.



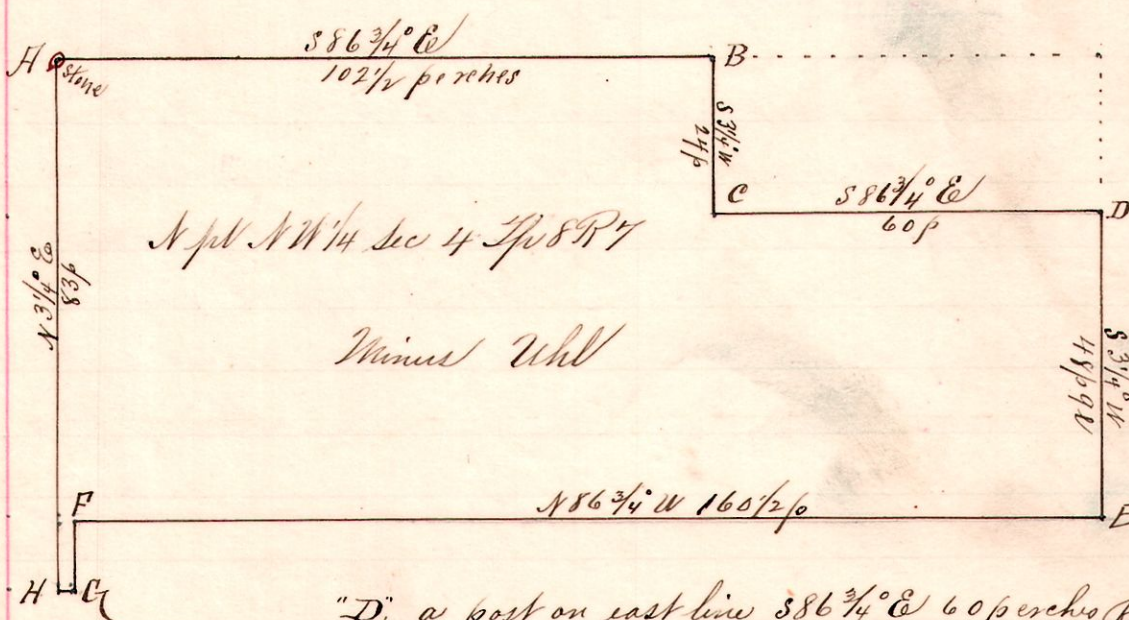
Notes

"A," a stone at the southeast corner of the Northwest quarter of Section 4, Tps. 8, R. 7.  
 "B," a post on the south line of said quarter N 86 3/4° W 57 1/2 links from A.  
 "C," a post N 3 1/4° E 86 perches from B.  
 "D," a post on the east line of said quarter S 86 3/4° E 57 perches 17 links from C, and S 3 1/4° W 86 perches to A.

Surveyed for Albert Uhl and Heirs of Charles H. Uhl, Dan Human and others March 9, 1894.  
 Frank H. Genet,  
 County Surveyor.

No. 54.

7 8 4 NW N



Notes

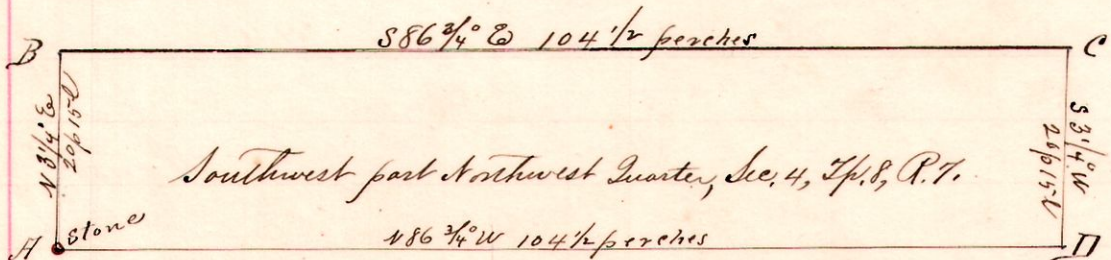
"A," stone at NW corner NW 1/4 Sec 4 Tps 8 R 7  
 Witnessed by  
 { Walnut 12 S 31° W 8  
 do 10 N 57° E 17 1/4  
 "B," a post on north line S 86 3/4° E 102 1/2 p from A.  
 "C," post S 3 1/4° W 24 p "B."

"D," a post on east line S 86 3/4° E 60 perches from C.  
 "E," " " " S 3 1/4° W 48 p 9 l " D.  
 "F," a post N 86 3/4° W 160 1/2 perches from E.  
 "G," " " S 3 1/4° W 10 p 17 l " F.  
 "H," post on west line, N 86 3/4° W 2 perches from G, and N 3 1/4° E 83 perches to A.

Surveyed for Minus Uhl, Simon Uhl, Wilda Porter A. J. Brink, Geneva Jackson, et al March 9, 1894.  
 Frank H. Genet,  
 Co. Surveyor.

No. 55.

7 8 4 NW SW



Notes

"A," stone at SW corner NW 1/4 Sec 4 Tps 8 R 7 - New witnesses:  
 { Beech 20 S 74 1/2° W 4 1/2  
 do 14 N 11 3/4° E 63 l  
 "B," post on W line N 3 1/4° E 20 p 15 l from A.  
 "C," post N 86 3/4° E 104 1/2 p " B."

"D," a post on south line, Albert Uhl's SW corner S 3 1/4° W 20 p 15 l from C and 104 1/2 p N 86 3/4° W to A.  
 Surveyed for Geneva Jackson, A. J. Brink, Wilda & D. M. Porter, Al & Digham Uhl, et al, March 9, 1894.

Frank H. Genet, County Surveyor.