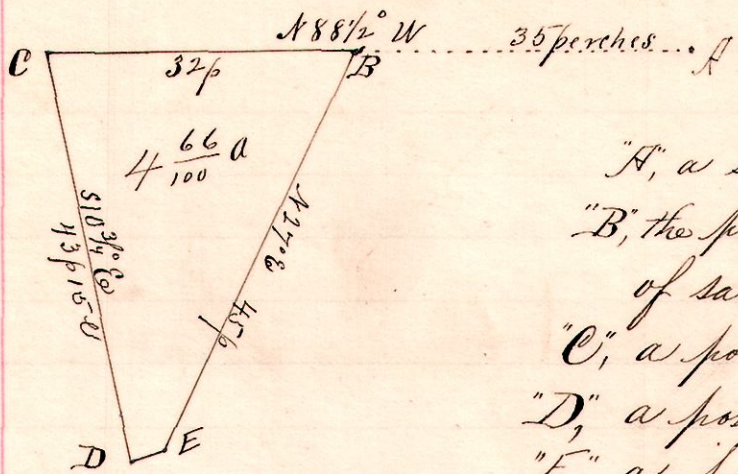


95  
02  
157

P 3/4 Sec 28  
13 14 28 SE NE

No. 47.



Notes.

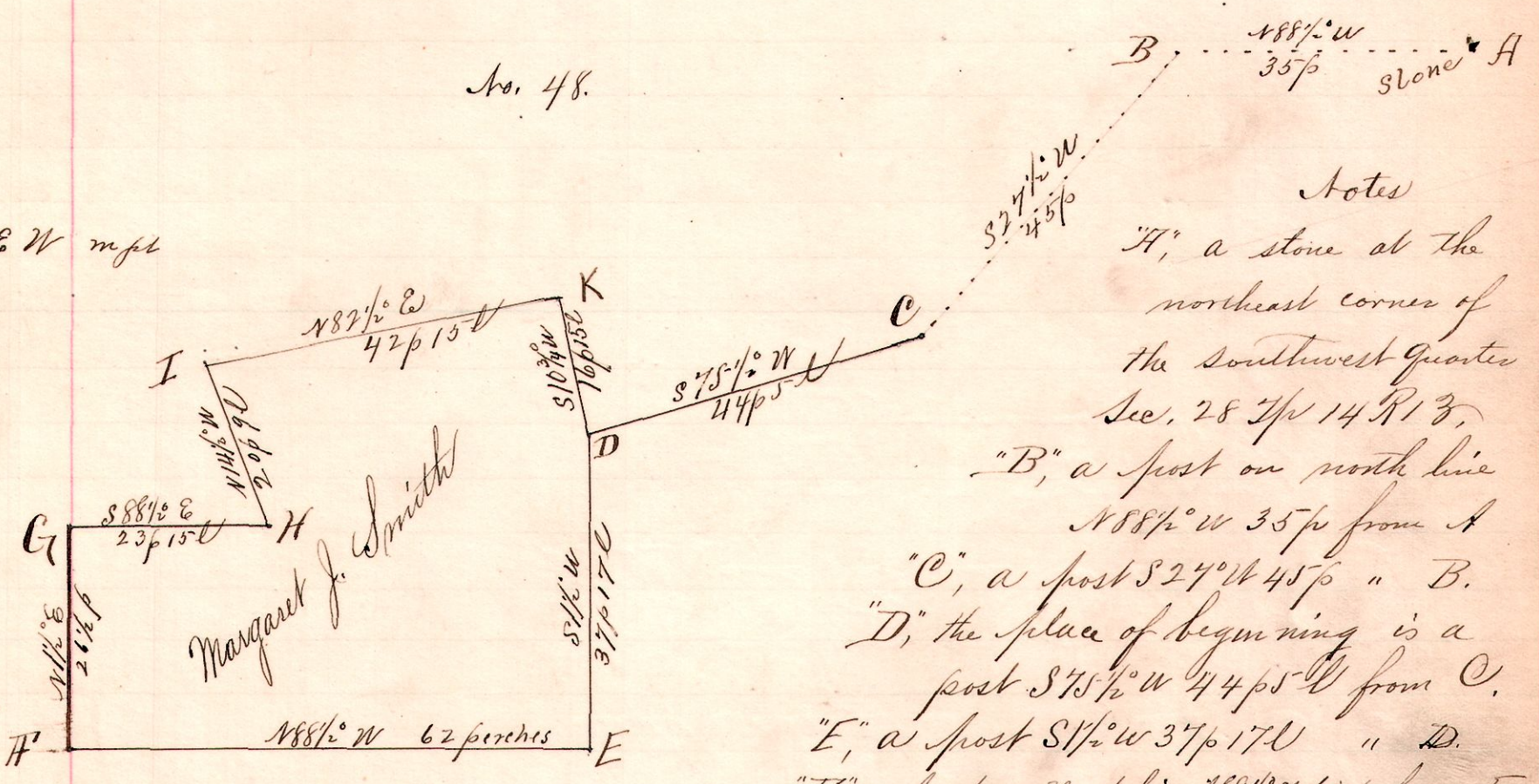
- "A", a stone at the northeast corner S.E. Dr. Sec. 28 1/4 R. 13.
- "B", the place of beginning, a post on the north line of said Quarter N 88 1/2 W 35 perches from A.
- "C", a post on said north line N 88 1/2 W 32 p from B.
- "D", a post S 10 3/4 E 43 p 15 l from C.
- "E", a post N 75 1/2 E 3 p 5 l " D, and N 27 E 45 p to B.

Surveyed for M. J. Smith, Geo. W. Miller, and others  
April 6, 1894.

Frank H. Genet,  
County Surveyor.

13 14 28 SE W mpt

No. 48.



Notes

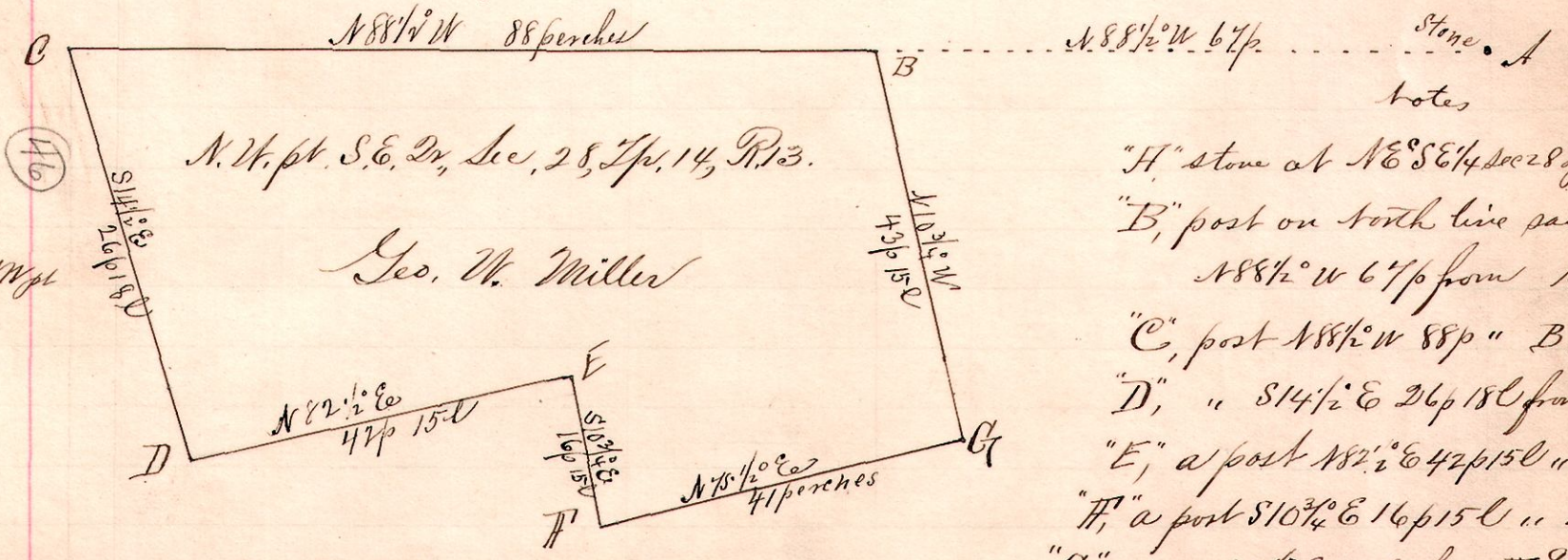
- "A", a stone at the northeast corner of the southwest Quarter Sec. 28 1/4 R. 13.
- "B", a post on north line N 88 1/2 W 35 p from A.
- "C", a post S 27 W 45 p " B.
- "D", the place of beginning is a post S 75 1/2 W 44 p 5 l from C.
- "E", a post S 1 1/2 W 37 p 17 l " D.
- "F", a post on West line N 88 1/2 W 62 p from E.
- "G", " " " " N 1 1/2 E 26 1/2 p " F.
- "H", a post in public road S 88 1/2 E 23 p 15 l " G.
- "I", " " " " N 14 1/2 W 20 p 8 l " H.
- "K", a post N 82 1/2 E 42 p 15 l from I and S 10 3/4 W 14 p 15 l to D.

Surveyed for Margaret J. Smith, Geo. W. Miller, et al, April 6, 1894.

Frank H. Genet,  
County Surveyor.

No. 49.

13 14 28 SE NW pt



Notes

- "A" stone at NE SE 1/4 Sec 28 1/4 R. 13
- "B", post on north line said 1/4 N 88 1/2 W 67 p from A
- "C", post N 88 1/2 W 88 p " B.
- "D", " S 14 1/2 E 26 p 18 l from C
- "E", a post N 82 1/2 E 42 p 15 l " D
- "F", a post S 10 3/4 E 16 p 15 l " E
- "G", " N 75 1/2 E 41 p from F and N 10 3/4 W 43 p 15 l to B

Surveyed for Geo. W. Miller, Margaret J. Smith, H. R. Seepers, et al  
April 6, 1894.

Frank H. Genet,  
Co. Surveyor.