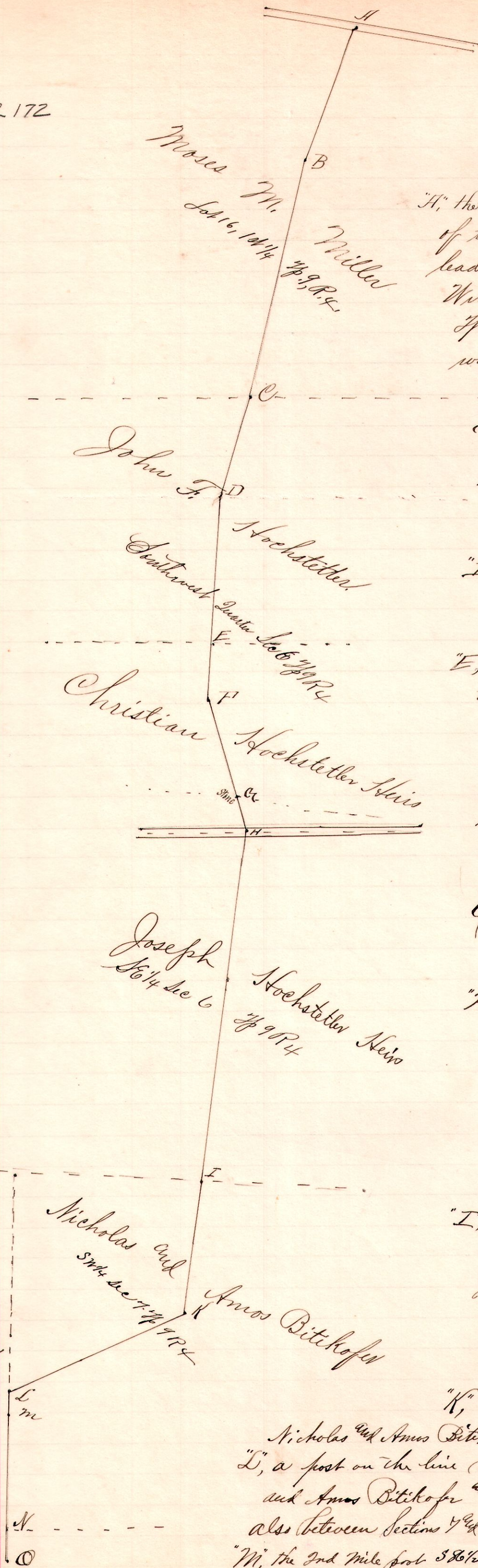


R 3/4 sections
4 } 9 { 6, 7 and 14
5 } 9 { 1st 16, 1st 14

CR 172

No. 39.



Notes.

"A," the place of beginning, is a piece of timber in the center of the road leading from New Carlisle to Winesburg, in Lot 16, 1st 14 Tp of Tp 9 R 4. - took the following witnesses { Stone Mt bridge S 15 1/2 W 1/2 150 Sugar 22 N 88 1/2 E 330

"B," a post S 67 1/2 E 34 perches

"C," a post on the line between the lands of Moses M. Miller and John F. Hochstetler S 76 1/2 E 104 1/2 perches

"D," a post on the lands of John F. Hochstetler S 73 3/4 E 42 1/2 perches

"E," a post on line between the lands of John F. Hochstetler and the lands of the Heirs of Christian Hochstetler S 86 1/2 E 68 1/2 perches

"F," a post on the lands of said Christian Hochstetler Heirs S 86 1/2 E 186 1/2 from E

"G," 1st Mile Stone on lands said Chnst. Hochstetler Heirs N 74 E 42 p 100 from F

"H," a post in a public road on the line between the lands of the Christian Hochstetler Heirs and the lands of the Joseph Hochstetler Heirs N 74 E 14 p 210 from G

"I," a post on the line between the lands of the Joseph Hochstetler Heirs and the lands of Nicholas and Amos Bitikofen, S 82 3/4 E 150 perches from H.

"K," a post on the lands of Nicholas and Amos Bitikofen S 82 3/4 E 56 p from I.

"L," a post on the line between the lands of Nicholas and Amos Bitikofen and the lands of David Gerber, also between sections 7 and 14, S 24 E 80 p from K

"M," the 2nd Mile post S 86 1/2 E 196 1/2 from L.

"N," a stone at S 84 E 7, S 86 1/2 E 49 1/2 p from "on the SW lands of John Weas, along line between S. Gerber and N. A. Bitikofen

David Gerber
1/4 Sec 14 Tp 9 R 4