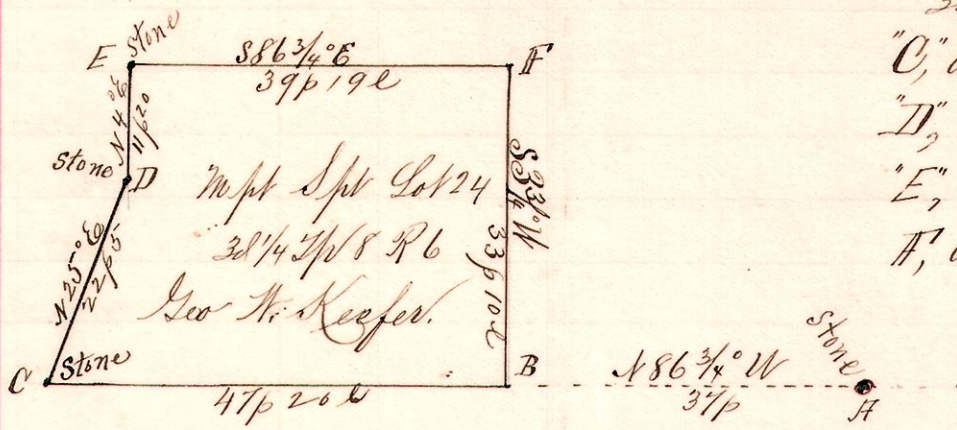


R 7th Dr Lot Pt
6 8 3rd 24 S mpt

No. 18.

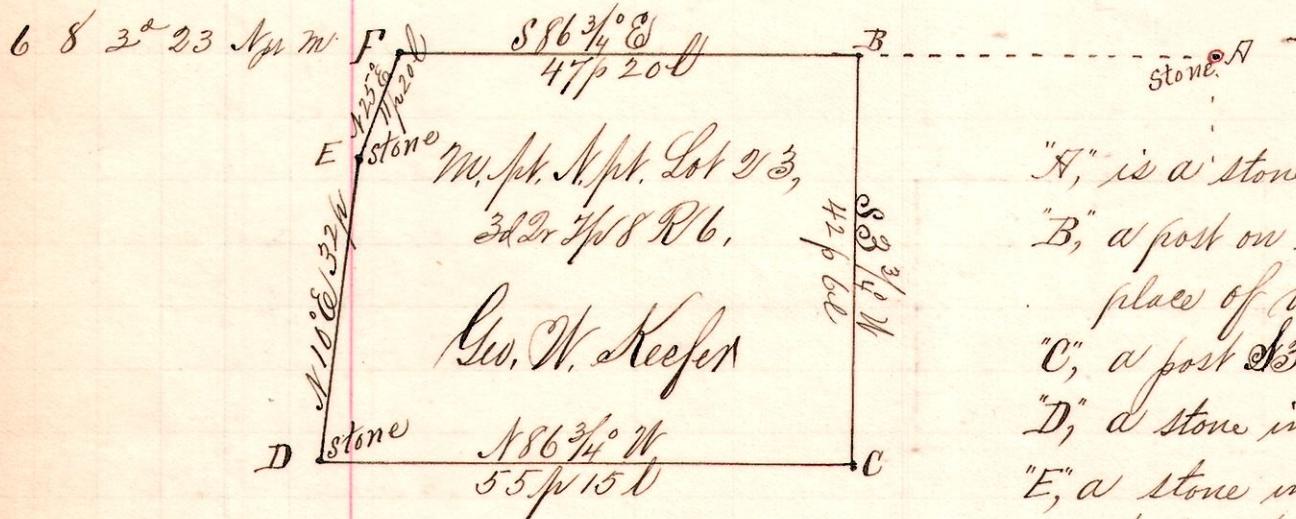


Notes
 "A," stone at the southeast Lot 24.
 "B," a post on the south line Lot 24
 3d Dr 7p 8 R 6, N86 3/4 W 37 p from A
 "C," a stone in road N86 3/4 W 47 p 20 l " B.
 "D," " " " " N25 E 22 p 5 l " C
 "E," " " " " N4 E 11 p 20 l " D
 F, a post S86 3/4 E 39 p 19 l from E, and
 S33 1/4 W 33 p 10 l to B, the place of beginning

Surveyed for H. A. Keefer and Geo. W. Keefer, et al,
 Sept. 20, 1893.

Frank H. Genet,
 County Surveyor.

No. 19.



Notes,

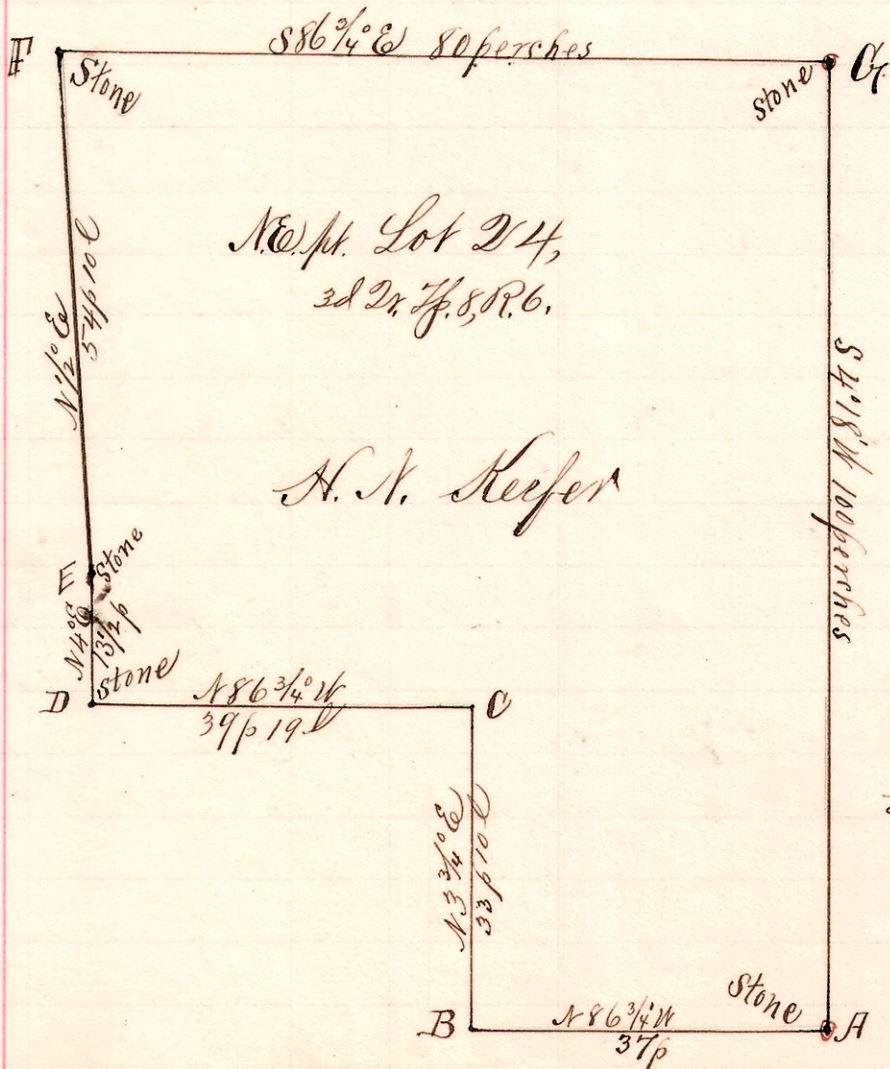
"A," is a stone at the northeast corner Lot 23, 3d Dr 7p 8 R 6.
 "B," a post on the north line of said Lot, the
 place of beginning N86 3/4 W 37 perches from A.
 "C," a post S33 1/4 W 42 p 6 l from B.
 "D," a stone in public road N86 3/4 W 55 p 15 l from C
 "E," a stone in said road N10 E 32 p perches " D.
 F, a post on north line N25 E 11 p 20 l from E, and 47 p 20 l to B

Surveyed for Geo. W. Keefer, H. A. Keefer, John Altman et al
 Sept. 20, 1893

Frank H. Genet,
 County Surveyor.

No. 20.

6 8 3rd 24 Ept



Notes.

"A," stone at southeast corner Lot 24
 "B," a post on south line N86 3/4 W 37 p from A.
 "C," a post N33 1/4 E 33 p 10 l from B.
 "D," a stone in road N86 3/4 W 39 p 19 l from C
 "E," " " " " N4 E 13 1/2 p " D
 "F," " " on north line N10 E 54 p 10 l " E
 "G," a stone at the northeast corner
 of Lot 24 S86 3/4 E 80 perches from F
 and 100 p S47 1/8 W to A, S E corner

Surveyed for Geo. W. &
 H. A. Keefer, Robt Elliott, et al
 Sept 20 1893.

Frank H. Genet
 Co. Surveyor
 Adams Co.
 Ill.