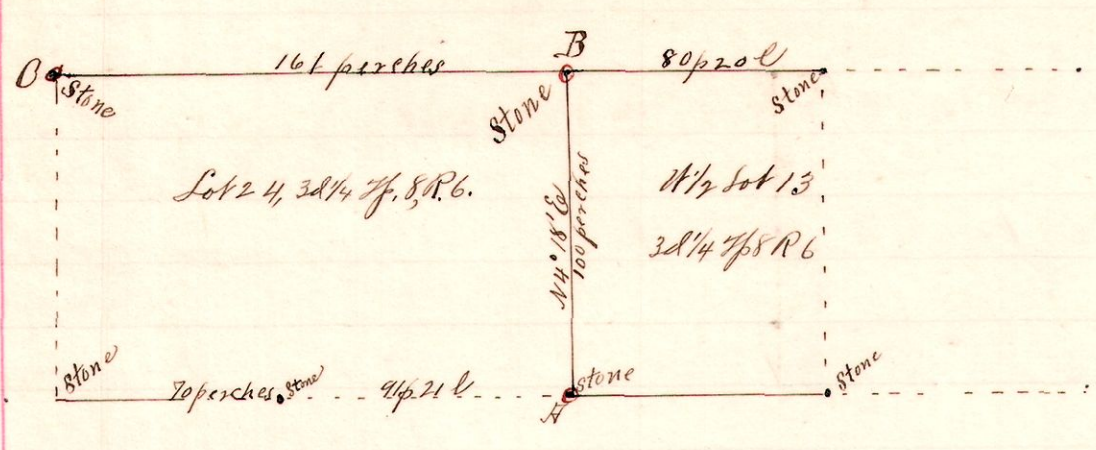


R 3/4 21 Lot  
6 8 3" 13  
24

No. 15.

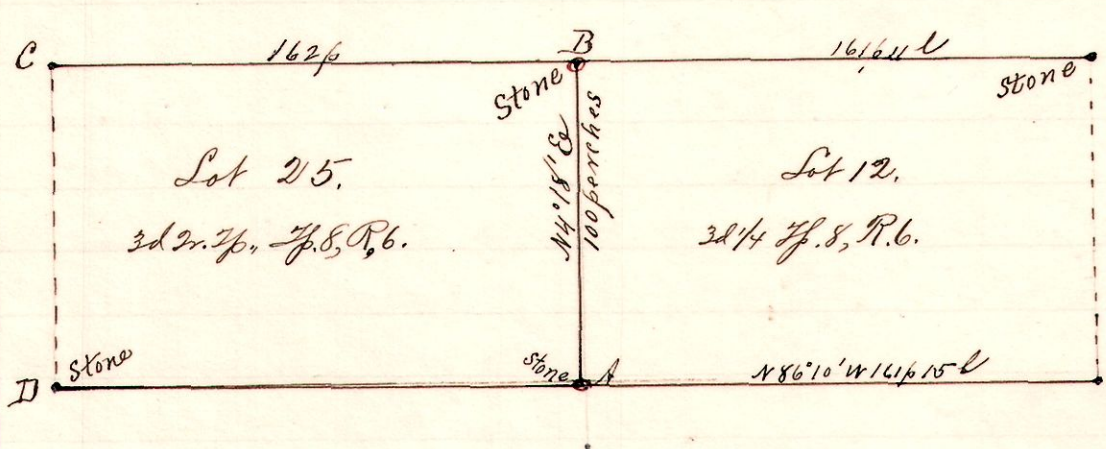


Notes.

"A" stone at southwest corner of lot 13 and southeast corner lot 24  
Established from old notes of J. Robinson  
"B" the northeast corner of lot 24.  
N 4° 18' E 100 p from A.  
Took the following new witnesses to B:  
 { W Elm 12 N 88° E 6 1/2 l  
 { Sugar 10 S 53° E 19 links  
 Surveyed for Geo. W. and A. N. Keefer, Robert Elliott and others Sept. 19, 1893.  
 Frank H. Genet,  
 County Surveyor.

6 8 3" 12  
25

No. 16.



Notes.

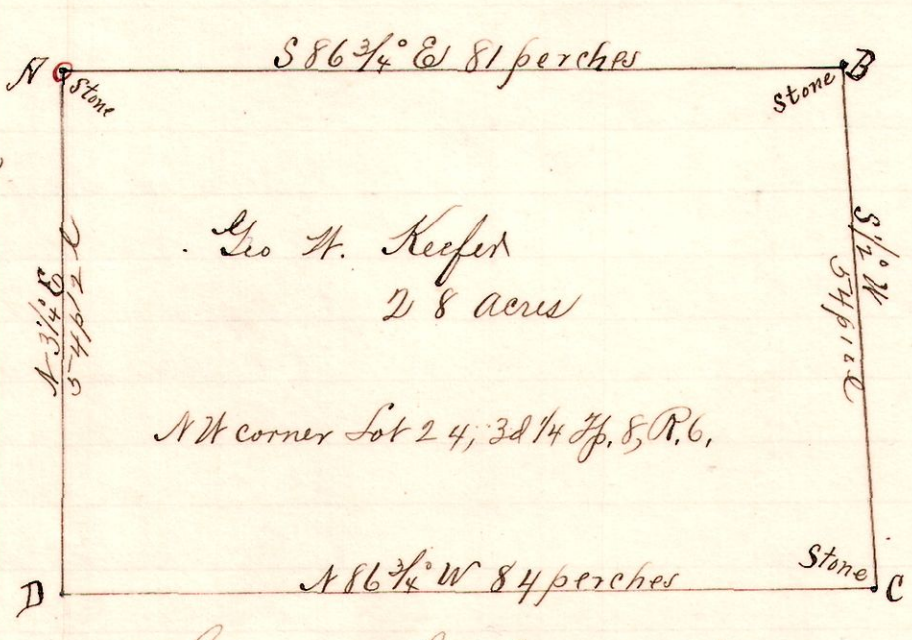
"A" a stone at SE corner lot 25  
 "B" " " " " " " " 25  
 N 4° 18' E 100 p from A.  
 Original Hickory 14 S 68° E  
 21 links at C good  
 New witnesses at B  
 Birch 24 N 86 1/2° W 16 links  
 B Walnut 8 S 72° E 9 "

Surveyed for J. F. Linn, Robert Elliott, Geo. W. & A. N. Keefer et al  
 Sept 20, 1893.

Frank H. Genet,  
 County Surveyor.

No. 17

6 8 3" 24 1/4



Notes

"A" a stone at the northwest corner of lot 24, 3d 1/4 Tp. 8, R. 6.  
 "B" a stone in public road, on north line said lot 24, S 86 3/4° E 81 perches from A  
 "C" a stone S 1/2° W 54 p 10 l from B.  
 "D" a post on west line N 86 3/4° W 84 p from C, and N 3 1/4° E 54 p 12 l to A.

Surveyed for Geo. W. Keefer, A. N. Keefer, Robt. Elliott, S. Frizell  
 Sept. 20, 1893.

Frank H. Genet,  
 County Surveyor,  
 Holmes Co., O.