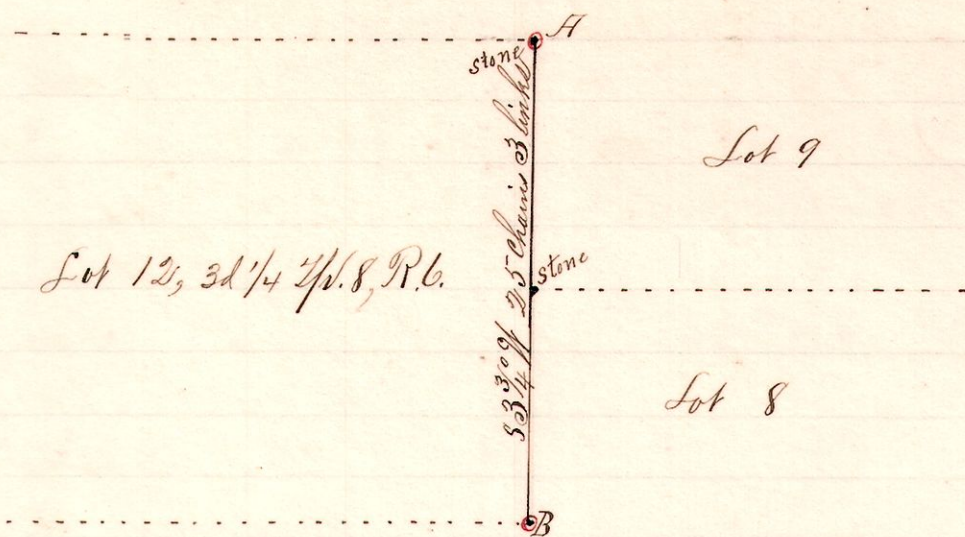


1 R 7th 2d Lot 12
6 8 3' $\frac{12}{8,9}$

No. 12.



Notes

"A" is the northeast corner Lot 12, 3d 2d 7p 8 R. 6, found from original witness Elm 6 S 14 W 14

Took as new witnesses to same corner:

{ Sugar 18 S 31 1/2 W 32 links
{ Hickory 12 N 83 1/2 W 41 "

"B" the southeast corner was located by running the east line of Lots 12 and 13 to a stone at the southeast corner of Lot 13;

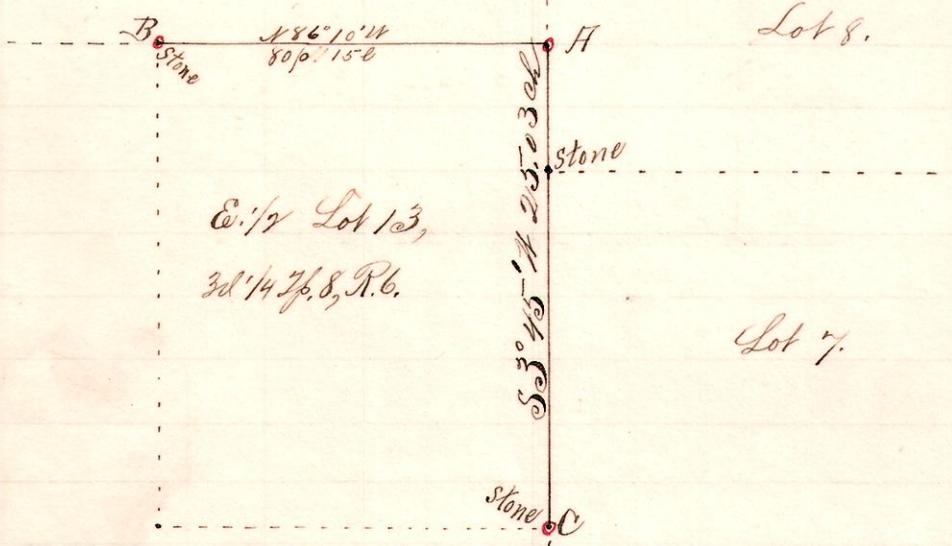
then dividing the distance

Surveyed the above for Robert Elliott, John H. Conrad, Wm. N. Keefe, et al, Sept. 19, 1893.

Frank H. Genet,
County Surveyor.

6 8 3' $\frac{13}{7,8}$

No. 13.



Notes

"A" the northeast corner Lot 13, 3d 1/4 7p 8 R. 6.

"C" a stone at the southeast corner

"B" the northwest corner of the E. 1/2

of said Lot N 86° 10' W 80 p 15 l from H.

Established the same by running

a line from said northeast corner

to a stone at the northwest corner

of said Lot 13; then taking

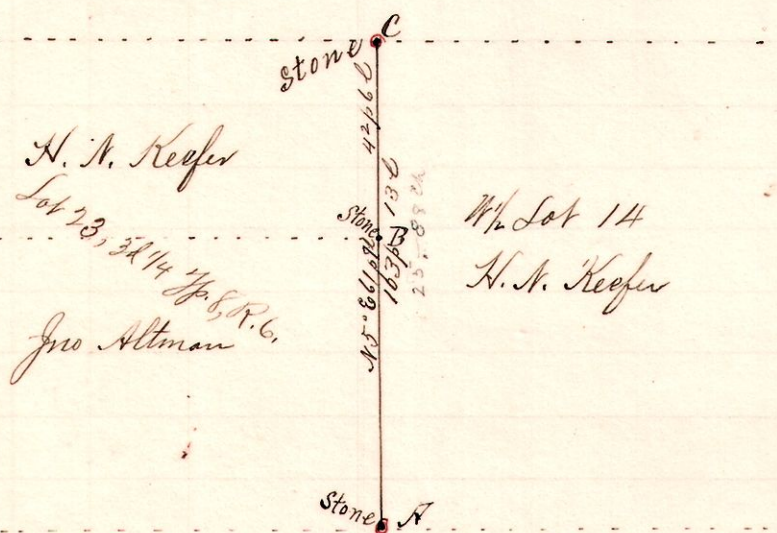
half the distance, planted stone corner.

Surveyed for H. N. Keefe, Robert Elliott, et al, to establish the corner between the East half and West half of Lots 12 and 13, 3d 2d 7p. of 7p. 8, R. 6. Sept. 19, 1893.

Frank H. Genet,
County Surveyor.

6 8 3' $\frac{23}{14}$

No. 14.



Notes

"A" stone at the southeast corner of

Lot 23 and Southwest corner of Lot

14 7p 8 R. 6.

"B" a stone at southeast corner

of the North part said Lot 23

"C" a stone at the northeast

corner said Lot 23, NW Lot 14.

Surveyed for John Altman Geo. H. and H. N. Keefe and others Sept. 19, 1893.

Frank H. Genet,
County Surveyor.