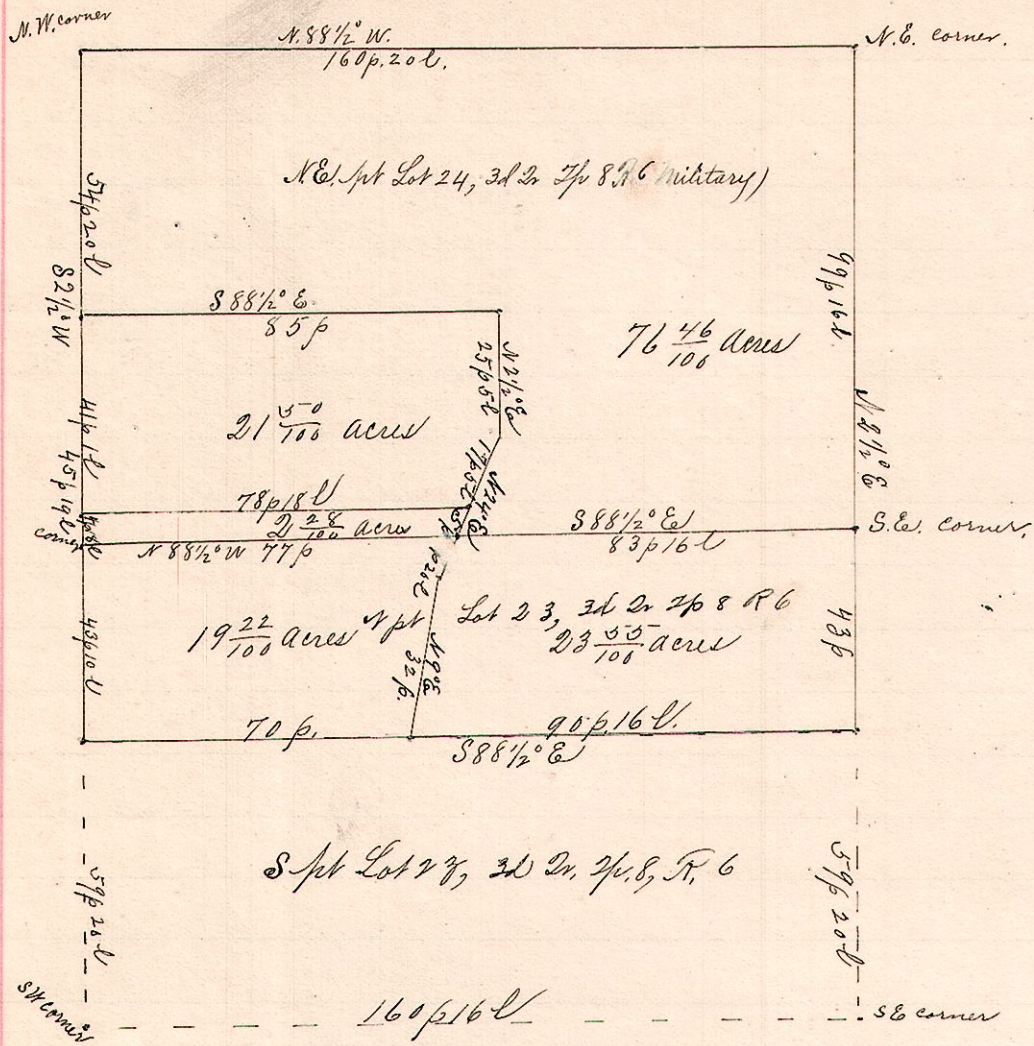


3d 2d 2d 2d
6 8 3d 24

No. 525.



Surveyed the above Lot 24 and north part of Lot 23, 3d 2d 2d of
Twp. 8, R. 6, Military, May 13, 1873.

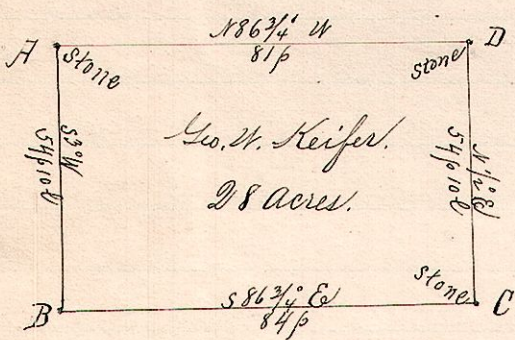
Samuel Robinson, Surveyor.

I hereby certify that the above is an exact copy of said plat,
by request of G. W. and H. N. Keifer.

Frank H. Gentry,
County Surveyor.

No. 526.

6 8 3d 24 NW



Notes.

- "A," a stone at the northwest corner of Lot 24, of the 3d 2d 2d of Twp. 8, R. 6, (Military)
- "B," a post on west line, S 3° W 54 p 10 l from A.
- "C," a stone in public road S 86 3/4° E 84 p from B.
- "D," a stone in said road and on north line of said Lot, N 1/2° E 54 p 10 l from C and S 86 3/4° E 81 p from A.

Surveyed the above for Henry N and Geo W Keifer, et al

Frank H. Gentry,
County Surveyor,
Holmes Co., O.