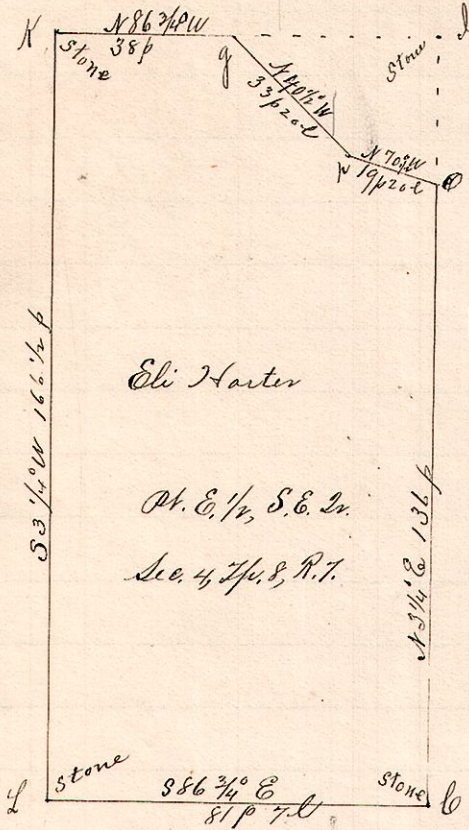


No. 522.

R 7 S 2
7 8 4 S & E 1/2



Notes.

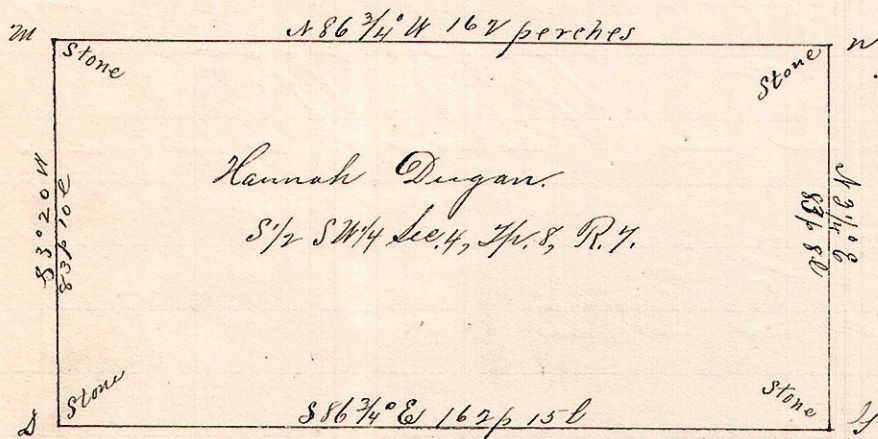
- "C", a stone at the southeast corner of the southeast quarter of Section 4, Tp. 8, R. 7.
- "O", a post in the public road on east line of said quarter N 3 1/4 E 136 perches from C.
- "p", a post in said road N 70 1/2 W 19 p. 20 l. from O
- "g", a post on the north line of said quarter N 40 1/2 W 33 p. 20 l. from p.
- "K", a stone at the northwest corner of said ^{half} quarter N 86 3/4 W 38 p. from g. and N 3 1/4 E 166 1/2 p. from L.
- "L", a stone at the southwest corner of the east half of said quarter S 3 1/4 W 166 1/2 p. from K and S 86 3/4 E 81 p. 7 l. to C.

Surveyed for Eli Harten, W. C. Stout, Julius Kauffman et al
Nov. 14, 1893.

Frank H. Genes
County Surveyor.

No. 523.

7 8 4 SW S 1/2



Notes

- New witnesses at 'm.
1. Elm 10 S 30 1/2 W 12
 2. W. Walnut 15 N 14 1/2 W 22.
- Assistants
Edward Stout
Eli Harten.

Description.

Beginning at D, a stone at the southwest corner of the southwest quarter of Section 4, Tp. 8, R. 7; thence S 86 3/4 E 162 p. 15 l., along the south line of said quarter to a stone at the southeast corner; thence N 3 1/4 E, along the east line 83 p. 8 l. to a stone, the half quarter corner; thence N 86 3/4 W 162 perches to a stone at the half quarter corner on the west line; thence S 3 2 0 W, along the west line 83 p. 10 l. to the place of beginning.

Surveyed the above for Hannah Dugan, W. C. Stout, et al.
Nov. 14, 1893.

Frank H. Genes
County Surveyor,
Holmes Co. O.