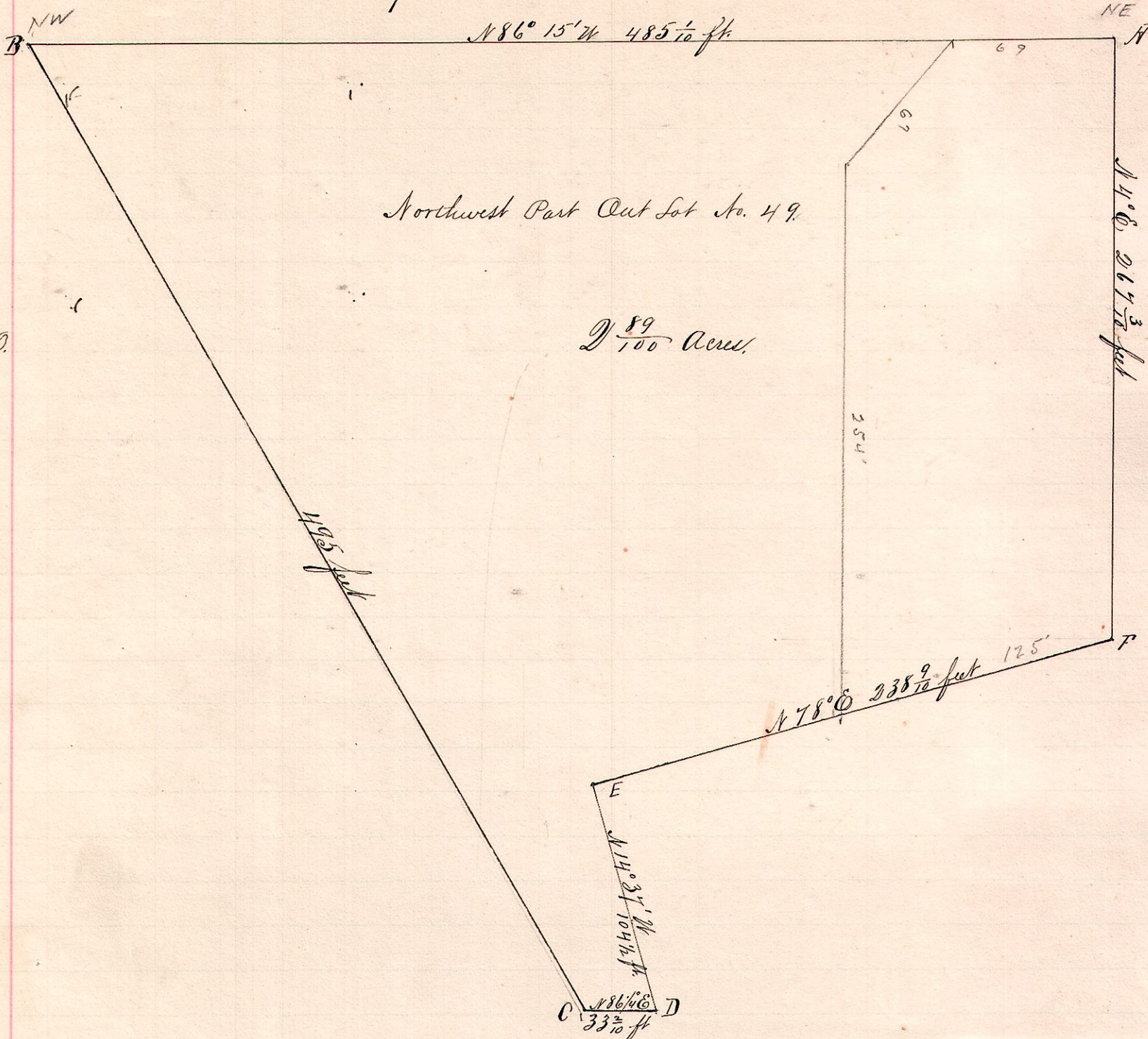


No. 507

R 7p
7 9 Millersburg, O.
Out Lot No. 49.



Notes.

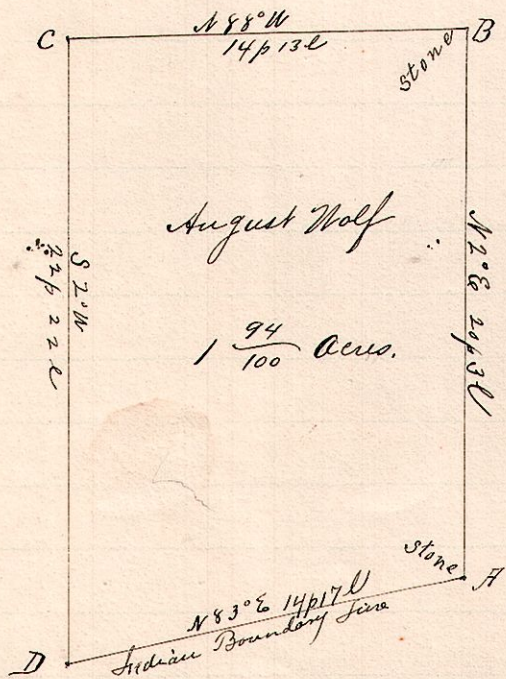
- "A," the northeast corner of Out Lot 49, is N86°15' West 375 ⁵/₁₀ feet from stone at NW Lot 284.
- "B," the northwest " " " " is a post on E line C. & C. R.R. N86°15'W 485 ¹/₁₀ ft from A.
- "C," the southwest " " " " " " " " " " " " 495 feet from B.
- "D," a post on south line of said Out Lot 49, S86°15'E 33 ⁷/₁₀ ft from C.
- "E," a post N14°37'W 104 ¹/₂ ft from D.
- "F," a post on east line said Out Lot N78°E 238 ⁹/₁₀ ft. from E and S4°W 267 ³/₁₀ ft from A, the northeast corner.

Surveyed for Susan Cary & Co. N & C. R.R. June 26, 1893.

Frank H. Gault, Co. Surveyor.

No. 508

12 14 ^{frac} 11 N & Pt



Notes.

- "A," stone on old Indian Boundary line the southwest corner 2 ft fractional Sec 11 Tp 14 R 12, also the southeast corner west pt said frac. N & C.
- "B," a stone in the public road N2°E 20 p 3 l from A
- "C," a post N88°W 14 p 13 l from B
- "D," a post in the public road and on the old Indian Boundary Line S2°W 22 p 2 l from C and S83°W 14 p 17 l from A.

Surveyed for August Wolf et al

July 27, 1893,

Frank H. Gault,
Co. Surveyor.