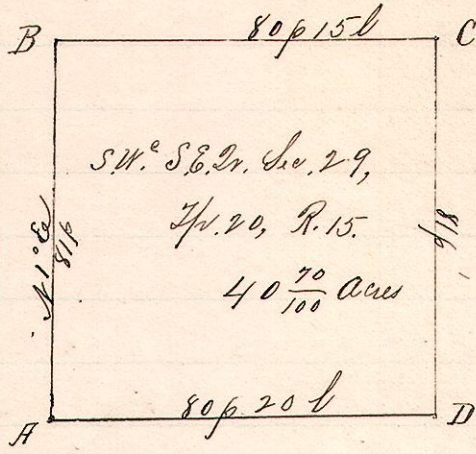


No. 484.

R 7th Sec 29
15 20 29 SE SW



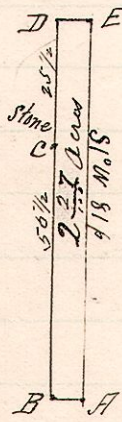
Notes.
 "A," the southwest corner of the southeast quarter of Section 29, Tp. 20, R. 15.
 "B," a post on west line of said quarter 41° E 81 perches from A.
 "C," a post 80 p 15 l east of B.
 "D," a post 81 p south of C and 80 p 20 l east of A.
 The lines BC, CD, DA, are the lines of old fences established by consent of interested parties.

Surveyed the above for Morgan A. Priest, Executor of the Estate of John Priest deceased, and William F. Fulmer, April 6, 1893.

Frank H. Genet,
County Surveyor.

No. 485.

15 20 29 SW SE



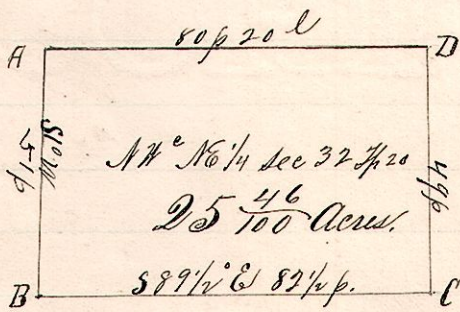
Notes.
 "A," the southeast corner of the southwest quarter of Sec 29, Tp. 20, R. 15.
 "B," a post on south line of said quarter, 4 1/2 perches west of A.
 "C," a stone N 1° E 55 1/2 p from B.
 "D," a post N 1° E 25 1/2 p from C and 81 p N 1° E from B.
 "E," a post on east line of said quarter 4 1/2 perches from D and N 1° E 81 p from A.

Surveyed for Wm F. Fulmer and M. A. Priest, Executors of John Priest, April 6, 1893.

Frank H. Genet
County Surveyor.

No. 486.

15 20 32 NE NW



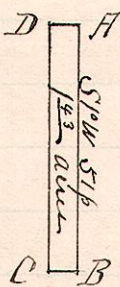
Notes.
 "A," the northwest corner, northeast quarter of Sec 32, Tp. 20, R. 15.
 "B," a post on west line said quarter, S 1° W 51 perches from A.
 "C," a post 89 1/2° E 82 1/4 p from B.
 "D," a post 49 rods north of C, and 80 p 20 l from A.
 The lines CD and DA are along old fence line established

Surveyed for Wm F. Fulmer and M. A. Priest, Executors of John Priest, deceased, April, 6, 1893.

Frank H. Genet,
County Surveyor.

No. 487.

15 20 32 NW NE



Notes.
 "A," the northeast corner of the Northwest quarter of Sec. 32, Tp. 20, R. 15.
 "B," a post on east line of said quarter S 1° W 51 perches from A.
 "C," a post in Columbus and Wooster Road 4 1/2 perches west of B.
 "D," a post 51 rods north of C, and 4 1/2 rods west of A.
 BC is along the center of the State Road (Columbus and Wooster.

Surveyed the above for W. F. Fulmer, M. A. Priest, Ex. Jno. Priest, April 6, 1893.

Frank H. Genet,
Co. Surveyor,
Holmes Co., O.