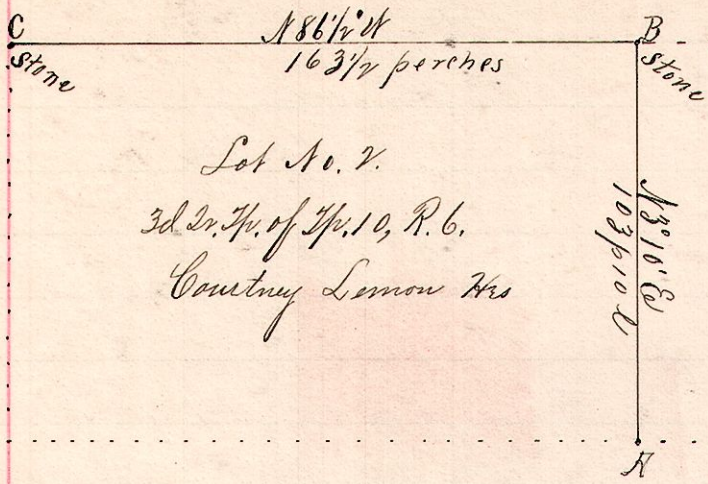


No. 481.



R. 2^d Tp. 10th R. 6.
6 10 3^d 18 line

Lot No. 2.
3^d 2^d Tp. of 10th R. 6.
Country Lemon Wis

Lot 18.
4th 2^d Tp. of 10th R. 6.

Notes.
"A" the southeast corner of Lot 2, 3^d 2^d Tp., and the southwest corner Lot 18 of the 4th 2^d Tp. of 10th R. 6. Took as new witness Sugar 30 in. in diameter S 46 1/4° E 25 1/2 l.

"B" the northeast corner said Lot 2 and the northwest corner Lot 18 said 10th R. 6 is N 3° 10' E 103 p 10 l from A.

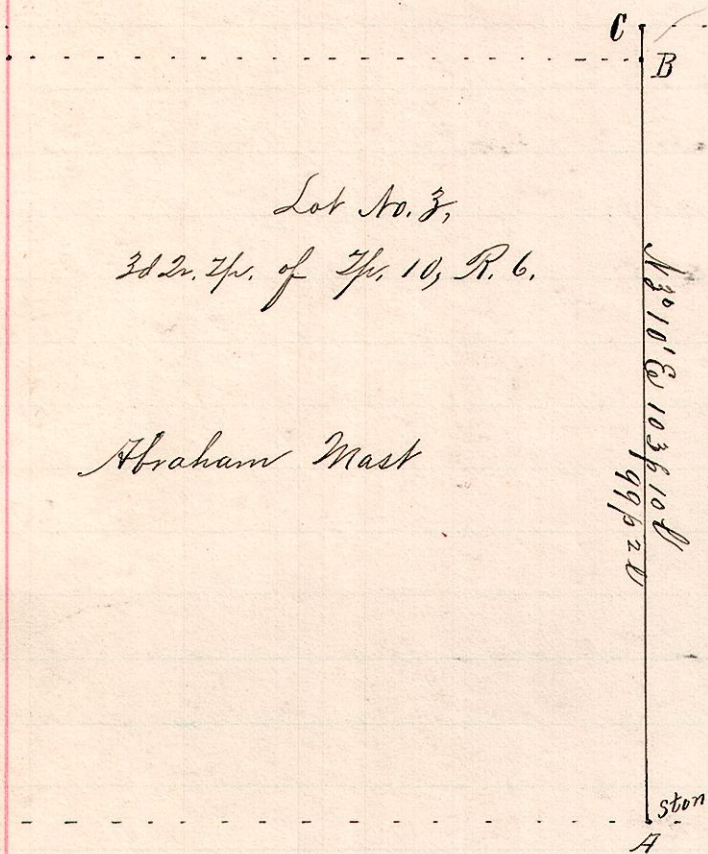
Planted stone, with glass and pottery under

Surveyed for Abraham Mast and Country Lemon Wis

Chairmen:
Louis Lahm
Jacob Henry
March 27, 1893.

Frank H. Genet,
County Surveyor.

No. 482.



6 10 3^d 19

Lot No. 3,
3^d 2^d Tp. of 10th R. 6.

Lot No. 19,
4th 2^d Tp. of 10th R. 6.

Notes.
"A" stone at the southeast corner Lot 3, 3^d 2^d Tp., and southwest corner of Lot 19, 4th 2^d Tp. of 10th R. 6.

"B" the northeast corner of said Lot 3, N 3° 10' E 99 p 2 l from A.
"C" the northwest corner of said Lot 19, N 3° 10' E 103 p 10 l from A and N 3° 10' E 4 p 8 l from B.

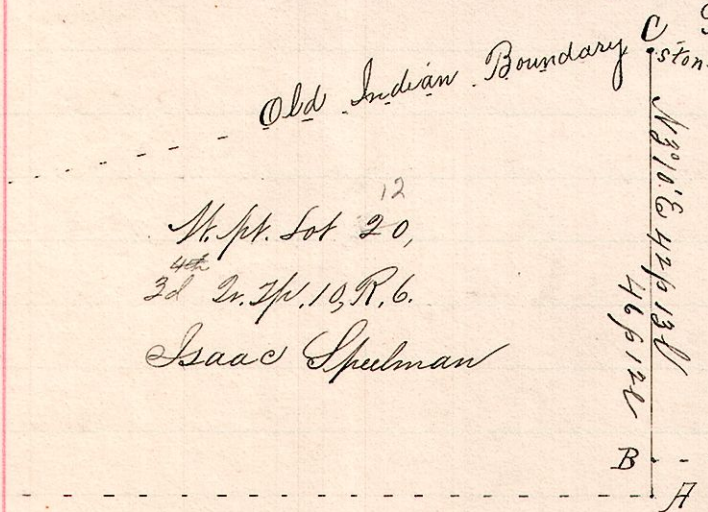
Chairmen:
Louis Lahm.
Jacob Henry.

Surveyed for Abraham Mast, G. Rottman, et al,

March 27, 1893.

Frank H. Genet,
County Surveyor.

No. 483.



6 10 4th 20
3 12

12
N. pt. Lot 20,
3^d 2^d Tp. 10th R. 6.
Isaac Spellman

E. pt. Lot 20,
4th 2^d Tp. 10th R. 6.

Notes.
"A" is the northeast corner Lot 3, 3^d 2^d Tp., of 10th R. 6.
"B" the northwest corner Lot 19, 4th 2^d Tp. 10th R. 6 N 3° 10' E 4 p from A
"C", a stone on old Ind Bound Line N 3° 10' E 42 1/2 p from B.

Surveyed the above for Isaac Spellman, Abraham Mast, Gottlieb Rottman, et al, to determine the line A-B, between E pt and W pt said Lot No 20.
March 27, 1893.

Frank H. Genet,
County Surveyor.