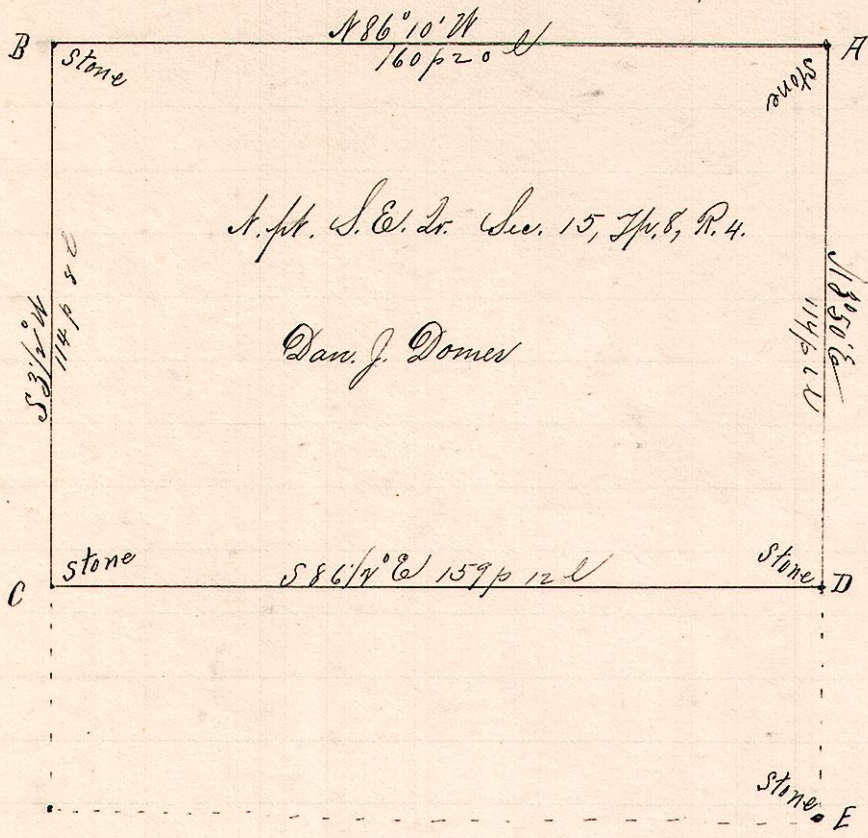


No. 478.

R 7th Sec 2  
4 8 15 S.E. 1/4



Notes.

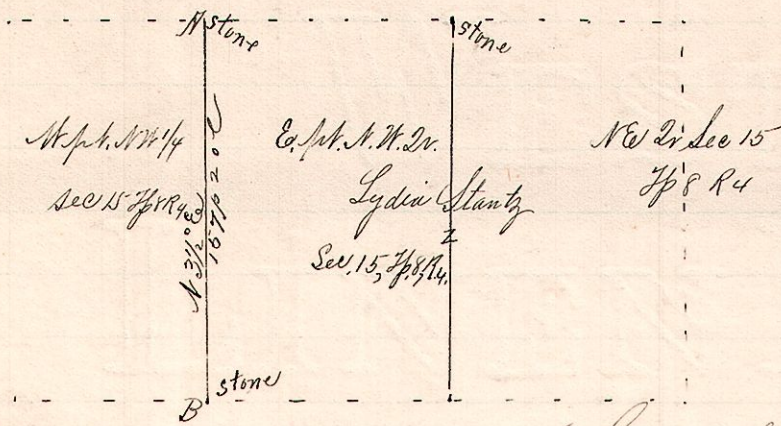
"A", stone at the southeast corner of the southeast quarter of Section 15, T<sub>7</sub>S, R. 4.  
 "B", a stone at NW corner of said Dr N 86° 10' W 160 p 20 from A.  
 "C", a stone on West line of said Dr. S 3 1/2° W 114 p 50 from B.  
 "D", a stone on east line S 86 1/4° E 159 p 12 from "C";  
 S 3° 50' W 114 p 60 " " " A,  
 and N 33° 50' E 44 p from E, the S.E. cor, said Dr, Sec.

Surveyed for Dan. J. Domes, Peter Beachy, J. D. Fryer, D. Fryer, et al  
 March 17, 1892.

Frank H. Genet,  
 County Surveyor.

No. 479.

4 8 15 NW 1/4



Notes

A, stone at NW corner of E. 1/4 NW 2 sec 15 T<sub>7</sub>S R 4  
 "B", a stone on south line said Dr sec, the southwest corner of land of Lydia Stantz  
 S 33° 10' W 107 p 20 from A.

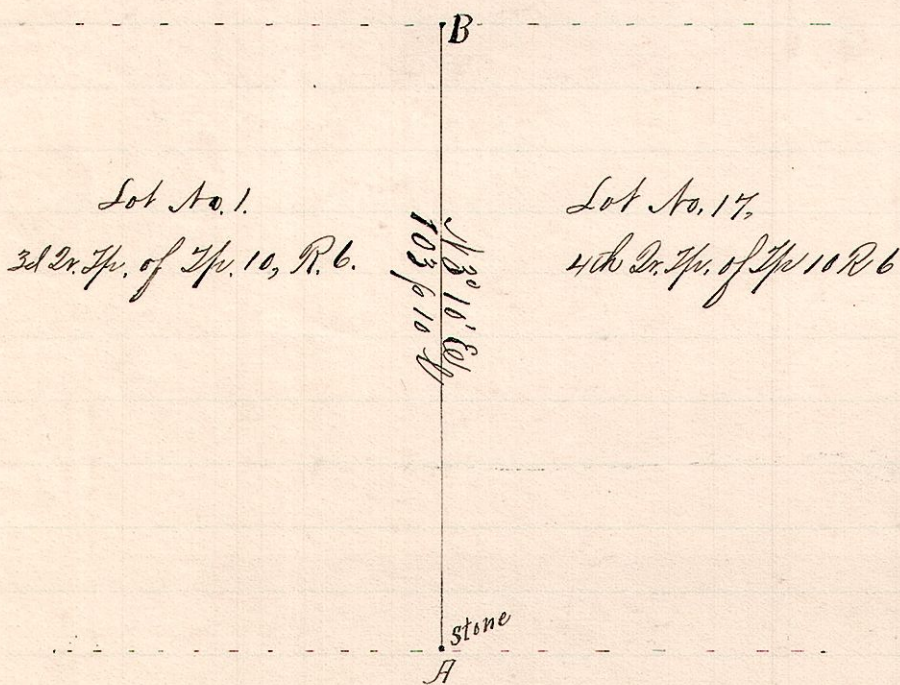
March 18, 1892.

Surveyed for Lydia Stantz et al to determine the line NW 1/4

Frank H. Genet,  
 Co. Surveyor.

No. 480.

R 7th Dr 7th Sec 6  
 10 3rd 17 Line



Notes.

"A", stone on Dr 7th line at the south east cor Lot 1, 3rd 1/4 p. and SW cor Lot 17 4th Dr 7th of 7th 10, R. 6.  
 "B", the northeast corner said Lot 1  
 N 3° 10' E 103 p 10 from A,  
 and witnessed by sugar 30 S 46 1/4° E 25 p  
 New Witnesses to A.  
 Chestnut 36 S 32 1/2° E 52 links  
 Walnut 5 East 37 links

Surveyed for Abraham Mast, J. B. Painter and others.  
 March 27, 1892.

Frank H. Genet,  
 County Surveyor.