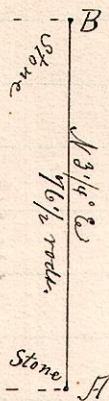


No. 475.

R. Tp. 14th Lot
9 9 4th 2 E

Lot 2
4th Tr. Tp. of Tp. 9, R. 9.



Notes

"A" a stone at the southeast corner of said Lot 2.

"B" a stone at the northeast corner N 3 1/4 E 76 1/2 rods from "A."

AB is the line between Lots in 4th Tr. Tp. of Tp. 9, R. 9. (Knox Tp) and 3d Tr. Tp. of Tp. 9, R. 9. (Monroe Tp)

Surveyed the above for David Fites, Fred. Kinney, M. Marrett, C. Zeller Feb. 18, 1893.

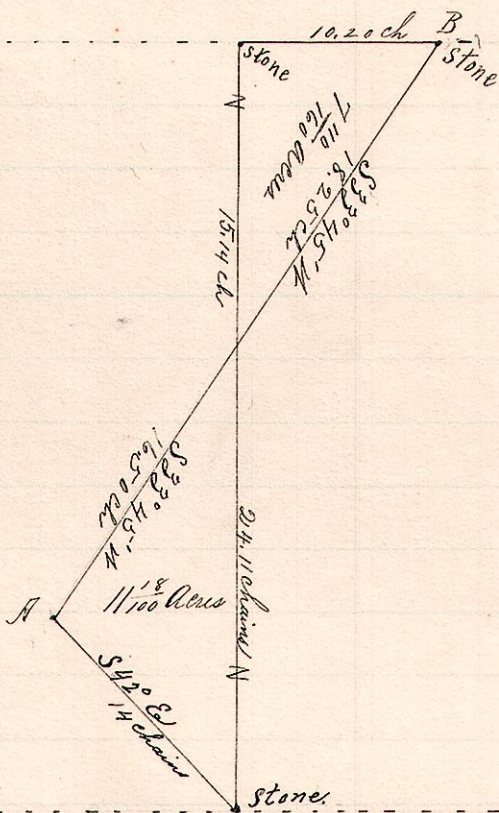
Frank H. Genet,
County Surveyor.

No. 476.

R. Tp. Sec. Trs.
14 8 14 N. & W.

N. W. Tr. Section 14
Tp. 8, R. 4.

N. E. Tr. Section 14
Tp. 8, R. 4.



Plat of a Survey made by Samuel Robinson in 1828, with original bearings and distances. At A planted a new stone corner, at B, we found his original corner stone buried about 4 feet in the public road; we placed a new stone on top of the old. Resurvey of the above by request of Geo. M. Dornier, et al, March 16, 1893.

Frank H. Genet,
County Surveyor,
Holmes Co., O.