

R 7/4 Sec 2
12 15 28 NE

No. 466.

Susan Phillips.

Th. pt. N.E. 2.

Sec. 28, Tp. 15, R. 12.

Henry Walter.

E. pt. N.E. 2.

Sec. 28, Tp. 15, R. 12.

Jonathan Phillips

S. pt. N.E. 2., Sec. 28, Tp. 15, R. 12.

Stone A

78 p 17 l

S 1° 35' W

Stone B

160 p 35 l

S 1° 35' W

1364 22

82 p 17 l

Stone C

See Page 381

Notes.

"A" a stone on the county line at the northeast corner of the northeast quarter Sec. 28, Tp. 15, R. 12.
"B", a stone on east line of said quarter at the southeast corner of 40 acres of H. Walter S 1° 35' W 17 l from A
"C" the southeast corner said Sec. is S 1° 35' W 160 p 35 l from A and 82 p 17 l from B also 88° 50' E 166 p from D a stone at the southwest corner said quarter Sec. 28, Tp. 15, R. 12.

Stone D

N 88° 50' W 166 pches

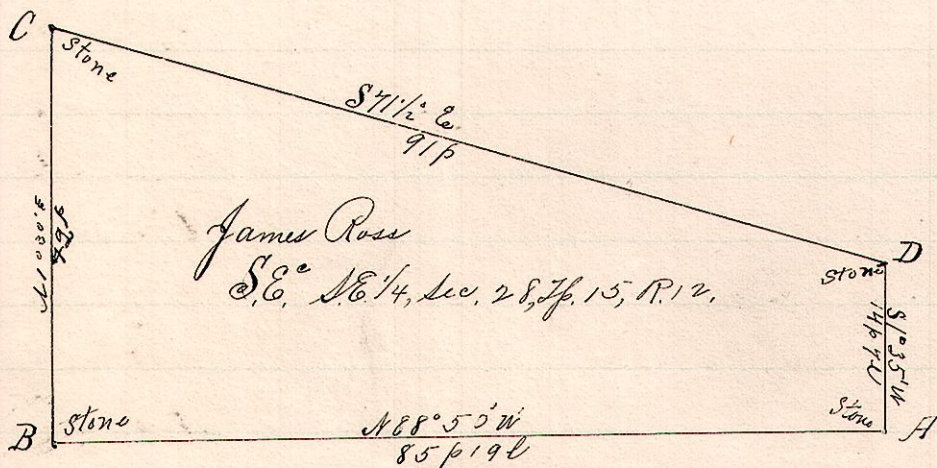
2739'

Surveyed the above for Jonathan Phillips, Henry Walter, H. P. Luper, et al, under notice of legal survey given by A. C. Stucker, Jan. 24, 1893.

Frank H. Genet
County Surveyor.

No. 467.

12 15 28 S6 S6



Notes

A, stone at S.E. corner S.E. 1/4, Sec. 28, Tp. 15, R. 12. on south line of said quarter section
"B", a stone N 88° 50' W 85 p 19 l from A.
"C", a stone N 1/2° E 42 p from B.
"D", a stone on east line of said quarter S 71 1/2° E 91 p from C and N 1° 35' E 14 p 7 l from A.
Witness to D - Elm 6 488° W 11 1/2 links
Planted stones at A, D, and C.

Surveyed the above James Ross, H. P. Luper, H. L. Barnes, et al, under the notice of legal survey given by A. C. Stucker Dec. 10, 1892. Jan. 24, 1893

Frank H. Genet
County Surveyor.