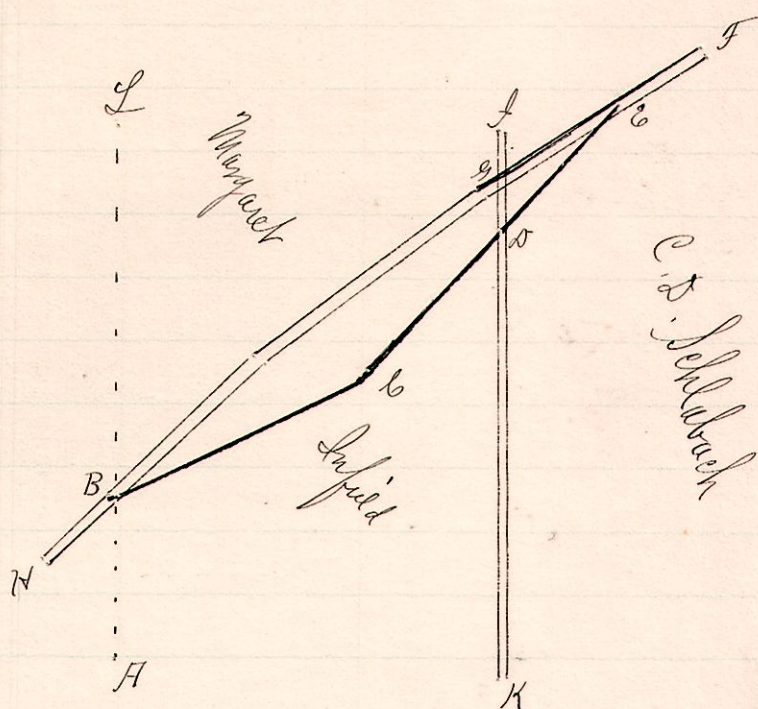


No. 460  
TR 142

R Tp Sec Dr  
5 8 10 SE H..



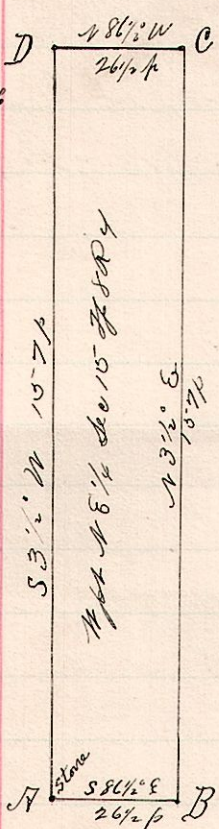
Notes

- "H", stone at SW corner of 40 acs off E side SW 1/4 section 10 Tp 8 R 5.
- "B", the place of beginning of proposed alteration of Co Road, a post on W line N 3 1/2° E 18 1/2 p from H.
- "C", a post on land of Margaret Infield N 68° E 28 1/2 p from B.
- "D", a post in State road on line between lands of Margaret Infield and C. S. Schlabach also on line between SW 1/4 and SE 1/4 sec 10 Tp 8 R 5 - N 50° E 20 p 19 c from C.
- "E", the terminus of proposed alteration, <sup>a post</sup> in center of road on lands of C. S. Schlabach in SE 2d sec 10, N 50° E 18 1/2 p from D.

Surveyed the above proposed alteration of a County Road,  
Dec. 15, 1892,  
Frank H. Guel, Co. Surveyor.

No. 461.

4 8 15 N 6 W side



Notes

- "H", a stone at the southwest corner of the northeast Quarter of Section 15 Tp 8 R 4
- "B", a post on south line said quarter S 86 1/2° E 26 1/2 p from H.
- "C", " " North " " " " N 3 1/2° E 15 7/2 p " B.
- "D", a stone at N.W. corner of " " N 86 1/2° W 26 1/2 p " C. and N 3 1/2° E 15 7/2 p from H.

Chairman,  
Jonathan Olmgu  
Joseph Ellenberg  
M. J. Domes, - Marker.

Surveyed for Lydia Stantz and Geo. Domes  
Dec. 16, 1892  
Frank H. Guel  
Co. Surveyor.