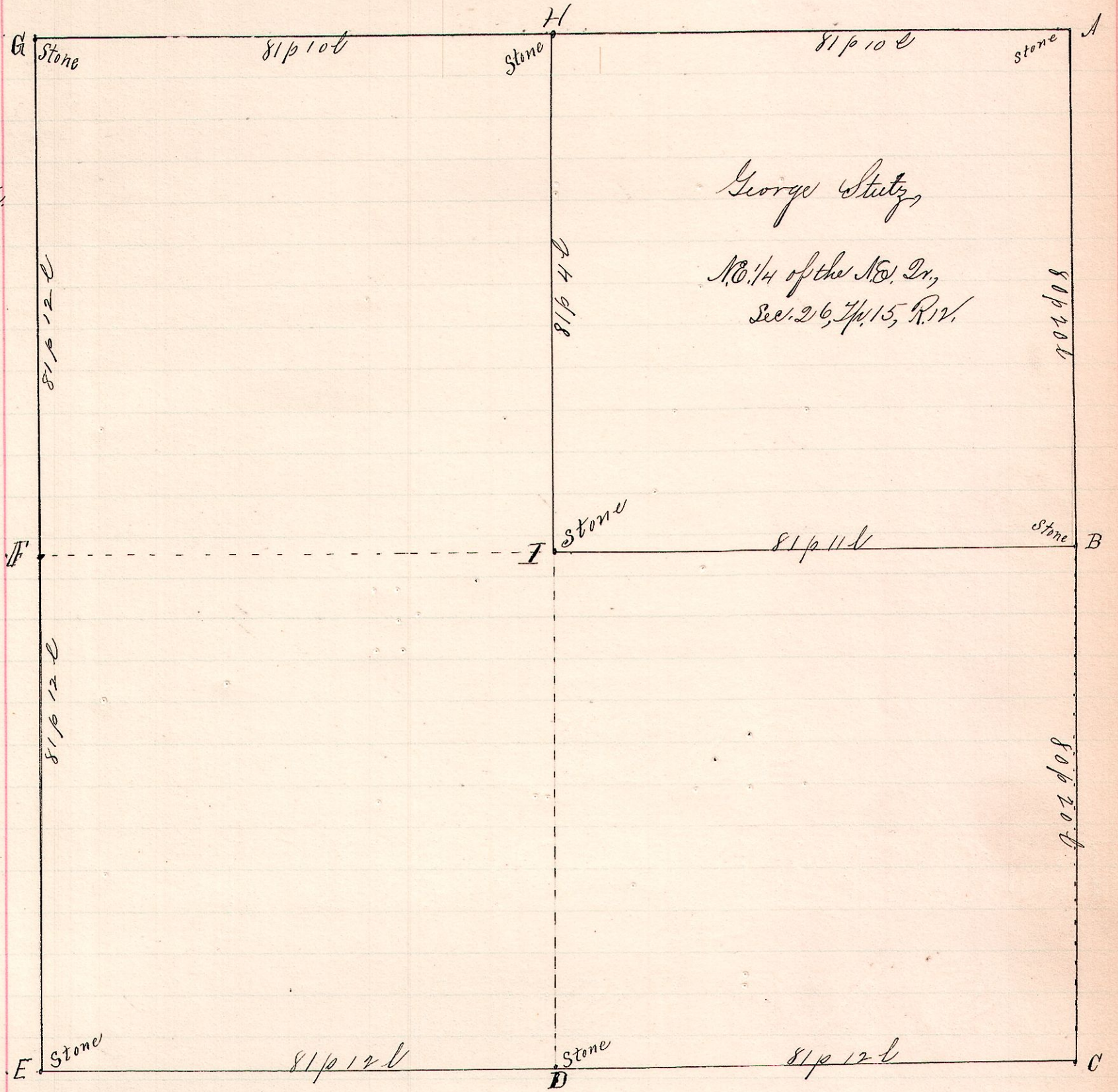


No 458

R 4th Sec 2^d
12 15 26 N.E. N.E.



I hereby certify the above to be a correct
plat and notes of a Legal Survey made for Geo Stutz et al
to establish the lines HI and IB, also the corner I; Surveyed
Dec 13, 14, 1892.

Frank H. Guet,
Co. Surveyor.